

Dulzura / Barrett

Community Wildfire Protection Plan

San Diego County, California

Document Tracking

(for use by CWPP Review Committee):

ORIGINAL CWPP

Date 1st submittal received: 1/18/18 CWPP Reviewed: 2/8/18

Revisions requested, letter to CWPP originators: 2/14/18

Revisions received: 4/20/18

Date CWPP approved by Committee: _____

Final signatures obtained: _____

CAL FIRE authorized: _____

Approval letter to CWPP originators: _____

PDF Posted to Website: _____

CWPP AMENDMENT(S)

Date Amendment received: _____ Amendment Reviewed: _____

Requested Amendment revisions letter to CWPP originators: _____

Revisions received: _____

Date Amendment approved by Committee: _____

Local signatures obtained on Reviewed/Approved Document: _____

CAL FIRE final signature/authorization: _____

Approval letter to CWPP originators: _____

PDF Posted to Website: _____

This material was produced by the Resource Conservation District of Greater San Diego County in partnership with the San Diego County Fire Safe Council. Funding is provided by a National Fire Plan grant from the Cooperative Fire program of the U.S. Forest Service through the California Fire Safe Council.

In accordance with Federal law and U.S. Department of Agriculture policy, this institution is prohibited from discrimination on the basis of race, color, national origin, sex, age, or disability.

Dulzura Barrett

Community Wildfire Protection Plan

San Diego County, California

Introduction

This Community Wildfire Protection Plan (CWPP) was developed by Dulzura / Barrett Fire Safe Council with guidance and support from the County of San Diego; Bob Uribe Jr., Bureau of Land Management Rex Hambley. This CWPP supplements San Diego County Department of Planning and Land Use documents referenced in Appendix A.

The communities of Dulzura and Barrett Junction are adjacent communities along Highway 94 served by one common fire safe council.

Dulzura / Barrett are located just north of the international border, west of Potrero and Tecate, east of Jamul, and south of Deerhorn Valley. Dulzura / Barrett Junction together cover nearly 75 square miles, housing over 900 people in nearly 500 housing units. Final Revision, 23 February 2018

Dulzura Barrett
Community Wildfire Protection Plan
Community name

Table of Contents

INTRODUCTION

SECTION I: COLLABORATION

 COMMUNITY / AGENCIES / FIRE SAFE COUNCILS

 COMMUNITY OVERVIEW

 IDENTIFICATION OF VALUES AT RISK

 LOCAL PREPAREDNESS & FIRE FIGHTING CAPABILITY

SECTION II: PRIORITIZED FUEL REDUCTION TREATMENTS

 PRIORITIES

 EXISTING PROJECTS

SECTION III: TREATMENT OF STRUCTURAL IGNITABILITY

SECTION IV: SIGNATURE PAGES

 SIGNATURE PAGES

SECTION V: APPENDIX A – LIST OF REFERENCES

SECTION V: APPENDIX B – - CWPP meeting tracking documents

SECTION V: APPENDIX C – MAPS

SECTION V: APPENDIX D – Amendments, etc.

ADDENDUM – AUTHORS CONTACT INFORMATION

This information is not included as part of the final public CWPP document for protection of the applicant's privacy as per the Privacy of Information Act. It will be attached as a separate document for internal use only and must be updated/revised periodically throughout the life of the document.

SECTION I: COLLABORATION**A: COMMUNITY / AGENCIES / FIRE SAFE COUNCILS**

Representatives directly involved in the development of the *Dulzura / Barrett CWPP* are included in the following table. Their organization, and roles and responsibilities are indicated below:

CWPP Development Team:

Organization/Name	Roles / Responsibilities
Dulzura/Barrett Fire Safe Council CWPP Coordinator: Jack Dillender, Yvonne Purdy-Luxton	Primary development of CWPP and decision-making, community risk and value assessment, development of community protection priorities, and establishment of fuels treatment project areas and methods.
Fire Safe Council (FSC) of San Diego County/Resource Conservation: Ann Baldrige, Britney Munoz	Provides educational outreach and support for pre-wildfire disaster planning, defensible space, fuel reduction and hazard assessment. Assist with collaborating between agencies and Fire Safe Councils.
CAL FIRE/San Diego County Fire: John Kremensky	Facilitation of planning process and approval of CWPP process and minimum standards. Provides input and expertise on forestry, wildland urban interface, fire, fuels and FireWise concepts. Provided meeting locations and support.
Bureau of Land Management (BLM): Jason Winbigler, Rex Hambly	Provides local information and expertise for BLM lands and the wildland urban interface, including fire prevention, fuels treatment and land management activities.
San Diego County Fire Authority (SDCFA): Bob Uribe Jr	Provides input and expertise on County lands as well as GIS support. Direct support for FSCs.

SECTION I: COLLABORATION -- continued

B. Community Overview – Description of topography, population, climate, land uses, businesses, schools infrastructure, fire safe councils, and other applicable traits specific to this CWPP area.

Dulzura / Barrett are located just north of the international border, west of Potrero and Tecate and east of Jamul and southeast of Deerhorn Valley. Dulzura / Barrett Junction together cover nearly 75 square miles, housing over 900 people in nearly 500 housing units.

Fire and Emergency Medical Services are provided by, San Diego County Fire and Cal Fire. The communities are within the Dulzura / Barrett Fire Safe Council area of influence and considered Wildland Urban Interface (WUI) areas. Public lands adjacent to or within these areas include the USFS Cleveland National Forest, Bureau of Land Management, U.S. Fish and Wildlife Service, and State Responsibility Areas. Within the FSCs area are properties owned by the City of San Diego including Barrett Lake. There are three natural preserves in these communities. The Dulzura / Barrett areas have seen greater than average fire return intervals, essentially making them high risk areas.

Otay Mountain Wilderness, part of the National Wilderness Preservation System called for by Congress, is located directly to the southwest. Consisting of 16,893 acres, the majority of this land lies within the Dulzura / Barrett FSC area.

Dulzura and Barrett Junction have similar vegetation types and topographical features. The region is characterized by steep slopes, rocky terrain, deep canyons and high hills with large swaths of wildlands between homes and communities. Major topographical features include Mother Grundy Peak, Otay Mountain, and Barrett Lake, which is located just south of the Cleveland National Forest. This area is also known for its vast grasslands and meadows. Vegetation is a mosaic of predominantly chaparral shrubs including: Chamise, Ceanothus, Manzanita, Buckwheat, Sage scrub, along with grasslands. Riparian systems line several of the valley floors. Some oak woodlands are interspersed throughout the region. The vegetation class is predominantly chaparral with oak woodlands. An especially large concentration of oaks lies along the Dulzura creek greenbelt. Sycamore trees exist in those same areas.

Homes and other structures are scattered throughout the region. All homes are individually built. There are some historical homes in the communities, some 100 or more years old. These were identified as old ranches and stage stops.

Dulzura has a U.S. Post Office, a grocery store, a Community Center, Barrett has a café and some smaller local businesses. Boutique wineries are a growing cottage industry in the area. A majority of lands is agriculture and ranch lands. There is a US Border Patrol border checkpoint.

Key features of the Dulzura / Barrett Junction area include the type of canyons described earlier in the history, but also large flat areas of fuel loads that can result in rapid spread of fire. Winds are common with the dry strong north and east winds (Santa Ana Winds) the deadliest in relation to fire. These predominate land features combine with the weather to create a corridor of extreme fire potential. The usual winds are from the west and south, which also can be a problem as they can be strong at times.

Although the area is not densely populated, there are a few areas of fairly dense clusters of housing that are highly vulnerable to fire, including; Barrett lake mobile home park, Cochera Via area, community building road area, and the Grocery market and post office area, and the junction of Highway 94 and marron valley road. Major water storage can be found at Barrett Lake (500-800 acres) There are some seasonal ponds in the area. These provide the area with a potential water supply for firefighting particularly helicopters. There are limited fire water Storage tanks for firefighting. Frequent power outages both planned and unplanned during high wind events highlight the need for improving water storage in these communities.

This area has not had a severe earthquake since about 1890. However, there are several known faults 50 to 100 miles east of here, such as the San Jacinto, Elsinore and San Andreas, that could have significant effects in this area. The 2010 Easter quake was a magnitude 7.2 in Calexico, 80 miles to the east.

Also, there is the danger posed by possible terrorist events in San Diego. A significant event could cause power outage, disease, and a mass influx of people to this area in need of shelter and support.

The proximity of the U.S.-Mexico border creates its own difficulties, as fires starting in one country sometimes spread to the other. Cooperative fire efforts are encouraged via planning and communications. Frequent threats from fires originating in Mexico is a major consideration for fire safety planning.

One primary road, Highway 94 (Campo Road) , which runs east/west is the only major road through the communities. This primary traffic route can, and has been, blocked by natural problems, flooding, boulders, and/or fire. These communities are very easily isolated when Highway 94 is closed, highlighting the need for community preparedness.

The limited extent of passable dirt roads and one sole egress route causes difficulty in emergency evacuations.



C. Identification of Community Values at Risk

Using technology and local expertise, the sponsors of this CWPP have developed a series of maps depicting the site and situation of the **Dulzura / Barrett** Community (Appendix B).

The CWPP includes the following maps:

1. An overview map of region
2. A map showing inhabited areas and values that could be threatened by wildland fire.
3. A preliminary designation of the region's wildland-urban interface (WUI) zone.
4. USGS topographic quad map or topographic contour line map that adequately depicts the topographic variation of the region.
5. A map showing the vegetation classes within and adjacent to the region.
6. A map showing publicly owned lands that are within and adjacent to the region

Values at risk within the community are:

(In terms of Communities at risk, the following assessment each of the communities is of concern based on the Cal Fire Strategic plan).

BARRETT -- Hazard: High. This community burned in 2007 Harris Fire, Regular wildland fire history

DULZURA -- Hazard: High. The community was burned in 2007 Harris Fire. Age class of fuels in this area is approaching 10 years.

For Both Dulzura and Barrett, values at risk within the communities are:

- Homes, primary residences for the community along with associated personal storage and vehicles.
- Local businesses, markets, café, feed stores
- Winery businesses, agriculture fields, and livestock areas.
- Local infrastructure such as Highway 94, the primary route between San Diego and the border crossing at Tecate and areas east to the eastern edge of the county.
- Fire Station with full time personnel and fire engine.
- Native cultural sites. Historical seasonal homelands
- Local habitats such as and Live Oak woodlands
- Sensitive species such as Tecate Cypress, Englemann Oak, Live Oak, Valley Oaks, Sycamores
- Mixed Chaparral and Sage Scrub habitat that host sensitive local flora and fauna
- Watershed function: public and private water system integrity and local aquifers
- Aesthetics: Preserves, Open space lands and agricultural trusts, Wildlife refuge, viewsapes, etc.
- Historical settlement sites
- Native cultural and historical sites

D. Local Preparedness and Firefighting Capability— All fire jurisdictions within the area as identified by this CWPP are listed below with information as available on number of firefighting personnel and fire response vehicles:

Fire protection for the Dulzura Barrett CWPP region is provided by Cal Fire along with San Diego County Fire. They provide the primary dedicated fire protection and EMS services. One local fire station is staffed full time, the Cal Fire/SDCo Fire Station 30 in Dulzura.

<u>Cal Fire Station 30, Dulzura</u>	<u>17304 Highway 94 Dulzura.</u>
Next available resources include:	
Cal Fire Station 31, Potrero	25130 Highway 94
Cal Fire Station 36 Jamul	14024 Peaceful Valley Ranch Rd.
San Diego County Station 37 Deerhorn Valley	2383 Honey Springs Rd.
US Fish and Wildlife Service Fire	14024 Peaceful Valley Ranch Rd.
Cal Fire Station 32, Lyons Valley	17759 Skyline Truck Trail.
Cal Fire Station 40, Campo	31577 Highway 94
SD County Station 42, Lake Morena	29690 Oak Drive
Cal Fire SDCo Fire Staion 44 Pine Valley	28850 Old Highway 80.

Old San Diego Rural volunteer station 35 in Dulzura is closed and inactive.

Along with the volunteers of this active Fire Safe Council, volunteer Community Emergency Response Team (CERT) is active in the Dulzura/Barrett Communities.

SECTION II: PRIORITIZED FUEL REDUCTION TREATMENTS

The partnership that exists between the listed organizations and citizens in this CWPP allows the community of **Dulzura and Barrett Junction** to reduce hazardous vegetative fuels that could ignite residences and commercial facilities, particularly, during Santa Ana wind fire conditions. Maintaining properties with the appropriate defensible space is a key factor to protecting lives and properties.

The CWPP is not to be construed as indicative of project “activity” as defined under the “Community Guide to the California Environmental Quality Act, Chapter Three, Projects Subject to CEQA.” Any actual project activities undertaken that meet this definition of project activity and are undertaken by the CWPP participants or agencies listed shall meet with local, state and federal environmental compliance requirements.

For the Dulzura / Barrett FSC, Defensible Space via Fuels management and Structure hardening/ ember intrusion prevention are the primary focus of this group.

A. Priorities

Regional & Local Projects. The Dulzura/ Barrett Fire Safe Council supports:

- Chipping for fuel reduction and abatement to meet SD County fire standards
- Assist with 100’ defensible space around structures
- Roadside vegetation management along roads
- Removal or treatment of dead and diseased trees
- Wood splitting as part of fuels management, local firewood use only (containment of potentially contaminated wood)
- Develop program to educate residents about defensible space and natural fire resistive vegetation concepts
- Research and identify resources for maintaining defensible space and vegetation reduction
- Assist seniors and disabled in creating defensible space (including power lines)
- Perform hazardous brush abatement around homes – reservoirs, tanks, pump stations and distribution facilities.
- Pursuit of bio-waste and or vegetation reduction transfer stations in East County, Barrett.
- Continuing our program to educate our residents on Sempra Energy “Sunrise Power Link” grant programs including structure hardening, defensible space improvements and fire safety items
- Community education for fire danger awareness and limitations
- Installation and maintenance of emergency water supply firefighting storage tanks
- Continued partnership with SD County Community Center for Fire Safe Council education programs and meetings
- Structure hardening or home pre-treatments such as wet waters foams and gels.

Dulzura/ Barrett Specific :

- Fuel breaks – Lucky Six Truck Trail project, Powerline associated fuel breaks, International border fuel breaks, fuel breaks in and around protected habitat throughout Dulzura /Barrett areas in cooperation with BLM, USFWS, Cal Fire and USFS.

- Fuel breaks. Develop fuel breaks, Improve clearances and for escape.
- Improve road between Hwy 94 and Mother Grundy Truck Trail, and Barrett Lake Rd. and Marron Valley Rd. for fire access. Both would require extensive permanent improvements prior to designating them as alternate escape routes.
- Encourage SD County Graded road improvements all private dirt roads, to assist in emergency evacuations.
- Maintain roadside vegetation along primary escape routes, alternates and contingency roads
- Maintain normal annual clearing within the community and past projects.
- Active weed abatement program support for local fire agencies.
- Active Defensible Space Inspections, DSI support for local fire agencies.

B. Existing Projects

The Dulzura Barrett FSC, along with our collaborators, is working on:

- Assisting homeowners with defensible space
- Assisting homeowners with structure hardening
- Assisting homeowners with natural fire resistive vegetation landscaping.
- Improved reflective code compliant road and address signs.
- The BLM and Cal Fire to develop the community Fuel Breaks.
- Eucalyptus removal (various sites).
- Removal of unwanted non-native and or invasive species.
- USFWS projects include fuel break construction.
- Working with Cal Fire and BLM on the International fuel break, extending 40 miles, including over Otay Mountain.
- Hazardous vegetation removal Letter of Authorization (where 100' defensible space includes BLM land)
- Ongoing Utility safety programs provided by contractors for SDG&E, AT&T and Cable providers.
- Normal Annual Clearing and active weed abatement programs.
- Annual Defensible Space Inspection (DSI) from local fire agency.

SECTION III: TREATMENT OF STRUCTURAL IGNITABILITY

In cooperation with the County of San Diego, the *Dulzura / Barrett Fire Safe Council supports* and promotes fire safe activities and supports and educates its citizens in ways to reduce structure ignitability (structure flammability) through meeting the requirements of the County of San Diego Building and Fire Code.

In cooperation with the County of San Diego Fire and Cal Fire, Dulzura / Barrett Fire Safe Council supports and promotes natural fire resistive vegetation concepts.

The partnership that exists between the listed organizations (federal, state, and local) allows the Dulzura Barrett Fire Safe Council to reduce hazardous vegetative fuels that could ignite residences and commercial facilities during wildfires.

- Encourage and retrofit homes to meet current and improved structure hardening standards.
- Encourage natural fire resistive vegetation to reduce ignitability of homes.
- Community education in reducing structural ignitability
- This material and education may be provided in both English and Spanish
- Standardize addresses, street names and use non-combustible signage with reflective lettering; include color-coded signage indicating water availability
- Obtain community water tank(s) and necessary hardware supply for fire suppression.
- Create fire gel cache and appropriate equipment for application. Make available for purchase on a sliding scale. Cooperate with local fire agencies to determine proper/effective usage and inform users.
- Encourage water tanks for firefighting to current fire codes. Reduce fuels around tanks; allow adequate defensible space, visibility and accessibility for fire crews. Have 4" male national hose (NH) adapter and 4" to 2.5" national hose (NH) reducer.

The Community Wildfire Protection Plan as developed for *Dulzura Barrett Fire Safe Council CWPP*:

- Was collaboratively developed, and meets the intent of the Healthy Forest Restoration Act (HFRA) in emphasizing the need for agencies to work collaboratively with communities in developing hazardous fuel reduction projects, and places priority on treatment areas identified by communities themselves in a CWPP. Interested parties and federal land management agencies in the vicinity of this CWPP have been consulted.
- Identifies and prioritizes areas for hazardous fuel reduction treatments and recommends the types and methods of treatment that will protect areas within this CWPP.
- Recommends measures to reduce ignitability of structures throughout the area addressed by the plan.
- Is intended for use as a planning and assessment tool only, utilizing a compilation of community issues/goals and projected fire mitigation strategies. The CWPP is not to be construed as indicative of project "activity" as defined under the "Community Guide to the California Environmental Quality Act, Chapter Three, Projects Subject to CEQA." Per the Community Guide, Section 3.1.1, "CEQA only applies to public agency decisions to approve, or actions to carry out, a discretionary project." Any actual project activities meeting this definition of project activity and undertaken by the CWPP participants or agencies listed shall meet with local, state and federal environmental compliance requirements.

President of Fire Safe Council submitting this CWPP
(Jack Dillender, Dulzura Barrett FSC)

Date

Secretary of Fire Safe Council submitting this CWPP
(Wanda Glover, Dulzura Barrett FSC)

Date

Local Member of Fire Safe Council submitting this CWPP
(Yvonne Purdy-Luxton, Dulzura Barrett FSC)

Date

Local Member of Fire Safe Council submitting this CWPP
(Dana Mottola, Dulzura Barrett FSC)

Date
Participating State, Local, or Tribal fire agency representatives (add or delete as required):

Agency name
(Local Fire Representative, Cal Fire)

Date

Agency name
(Local Fire Representative, BLM)

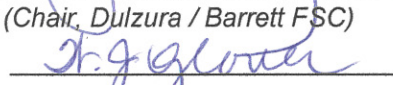
Date

The Community Wildfire Protection Plan as developed for *Dulzura / Barrett Fire Safe Council CWPP*:

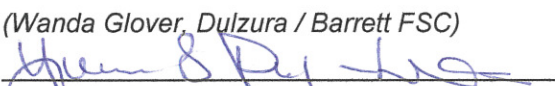
- Was collaboratively developed, and meets the intent of the Healthy Forest Restoration Act (HFRA) in emphasizing the need for agencies to work collaboratively with communities in developing hazardous fuel reduction projects, and places priority on treatment areas identified by communities themselves in a CWPP. Interested parties and federal land management agencies in the vicinity of this CWPP have been consulted.
- Identifies and prioritizes areas for hazardous fuel reduction treatments and recommends the types and methods of treatment that will protect areas within this CWPP.
- Recommends measures to reduce ignitability of structures throughout the area addressed by the plan.
- Is intended for use as a planning and assessment tool only, utilizing a compilation of community issues/goals and projected fire mitigation strategies. The CWPP is not to be construed as indicative of project "activity" as defined under the "Community Guide to the California Environmental Quality Act, Chapter Three, Projects Subject to CEQA." Per the Community Guide, Section 3.1.1, "CEQA only applies to public agency decisions to approve, or actions to carry out, a discretionary project." Any actual project activities meeting this definition of project activity and undertaken by the CWPP participants or agencies listed shall meet with local, state and federal environmental compliance requirements.


President of Fire Safe Council submitting this CWPP
 (Chair, Dulzura / Barrett FSC)

1/5/18
 Date


Secretary of Fire Safe Council submitting this CWPP
 (Wanda Glover, Dulzura / Barrett FSC)

1-5-18
 Date


Local Member of Fire Safe Council submitting this CWPP
 (Yvonne Purdy-Luxton, Dulzura / Barrett FSC)

1/5/18
 Date


Local Member of Fire Safe Council submitting this CWPP
 (Dana Mottola, Dulzura / Barrett FSC)

1/5/18
 Date

Participating State, Local, or Tribal fire agency representatives (add or delete as required):


Agency name
 (Local Fire Representative, Cal Fire)

1/8/15
 Date



Agency name
 (Local Fire Representative, BLM)

1/5/18
 Date

SECTION IV: SIGNATORS - page 2

This Community Wildfire Protection Plan has been developed for the community/ies of **Dulzura and Barrett**

This CWPP was reviewed and recommended for approval by the San Diego Community Wildfire Protection Plan Review Committee as demonstrated by the signature below.



Chair of CWPP Review Committee
(name) **DONALD H BUTZ**
Date **5/25/18**

The CAL FIRE Unit Chief has final signing authority on CWPPs in San Diego County. The signature below attests that the standards listed in the section above and the content of this Community Wildfire Protection Plan are proposed to be met and mutually accepted:



STATE AGENCY (authorizing entity — required for finalization)
Date **6-11-18**

California Department of Forestry and Fire Protection (CAL FIRE)
Monte Vista Unit
Tony Mecham, Unit Chief

Documentation Affecting Fuels Reduction, Building Construction, and Community Fire Protection

LIST OF REFERENCES:

1. County of San Diego Building Code, available at: <http://www.sandiegocounty.gov/content/sdc/pds/bldg.html>
2. County of San Diego Consolidated Fire Code (2011), available at: <http://www.sandiegocounty.gov/pds/docs/cosd-fire-code.pdf>
3. County of San Diego Code of Regulatory Ordinances, Title 6 Health and Sanitation, Division 8. Sewage and Refuse Disposal, Chapter 4. Removal of Combustible Vegetation and Other Flammable Materials (current code).
4. County of San Diego, Multi-Jurisdictional Hazard Mitigation Plan (2010), available at: <http://www.sandiegocounty.gov/content/dam/sdc/oes/docs/2010-HazMit-Final-August-2010.pdf>
5. County of San Diego, Fire, Defensible Space and You....
http://www.sandiegocounty.gov/pds/fire_resistant.html
6. CAL FIRE Fire and Resource Assessment Program (FRAP) <http://frap.fire.ca.gov> for additional maps, data and documents
7. <http://www.readyforwildfire.org>
8. www.livingwithfire.com
9. www.firesafecouncil.org
10. www.firesafesdcounty.org

SECTION V: Appendix B: Meeting Tracking Documents

Dulzura/Barrett Junction Fire Safe Council

Members contributing to this document.

Ms. Yvonne Purdy-Luxton
Mr. Jack Dillender
Ms. Wanda Glover
Ms. Dana Mottola
Ms. Linda Boswell
Mr. Bob Uribe, SDCo Fire
Ms. Andrea Smith
Mr. Jack Smith
Mr. Jeff McGarrity
Ms. Mari McGarrity
Ms. Suzi Gallegos
Mr. Jacob Westcott

Fire Representatives:

Battalion Chief John Kremensky, Cal Fire
Fire Captain Dave Carney, Cal Fire
Fire Captain Rex Hambly, BLM

Meeting Dates:

October 2, 2017 meeting, Dulzura Community Center

November 3, 2017 Initial Meeting CWPP, Dulzura

November 17, 2017 follow up CWPP meeting, Dulzura

November 6, 2017 Dulzura Barrett FSC Meeting

December 15, 2017 Fire Safe Council of San Diego CWPP workshop

December 15, 2017 follow up CWPP meeting, Dulzura

December 29, 2017 follow up CWPP meeting, Dulzura

December 30, 2017 follow up and changes. V.7a

January 5, 2018 follow up CWPP meeting with updates v.8

February 23, 2018 follow up CWPP Review and update. Final

Figure 1: *Area Map (Required)*

Figure 2: *Communities Map*

Figure 3: *Assets at Risk*

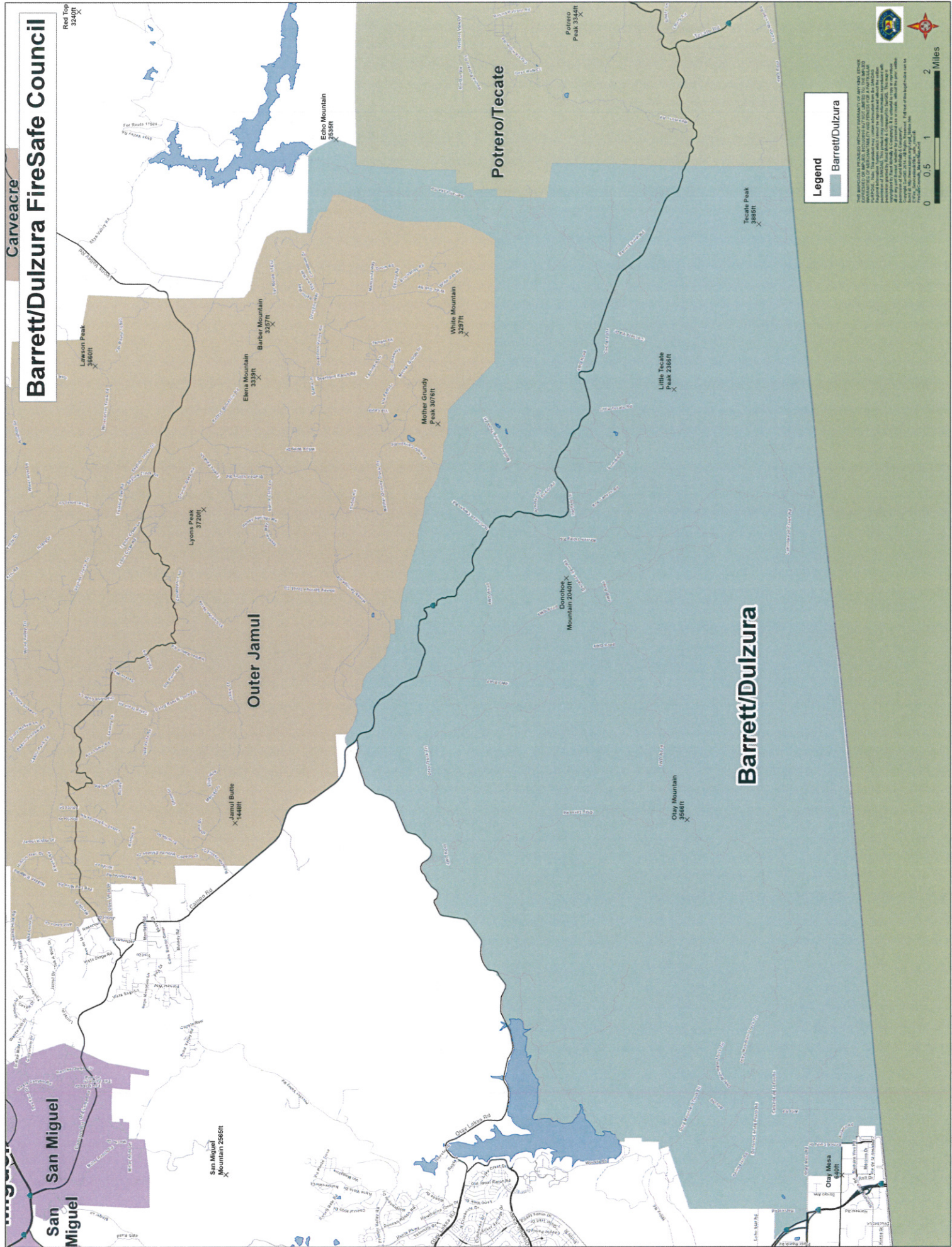
Figure 4: *USGS Topographic Map*

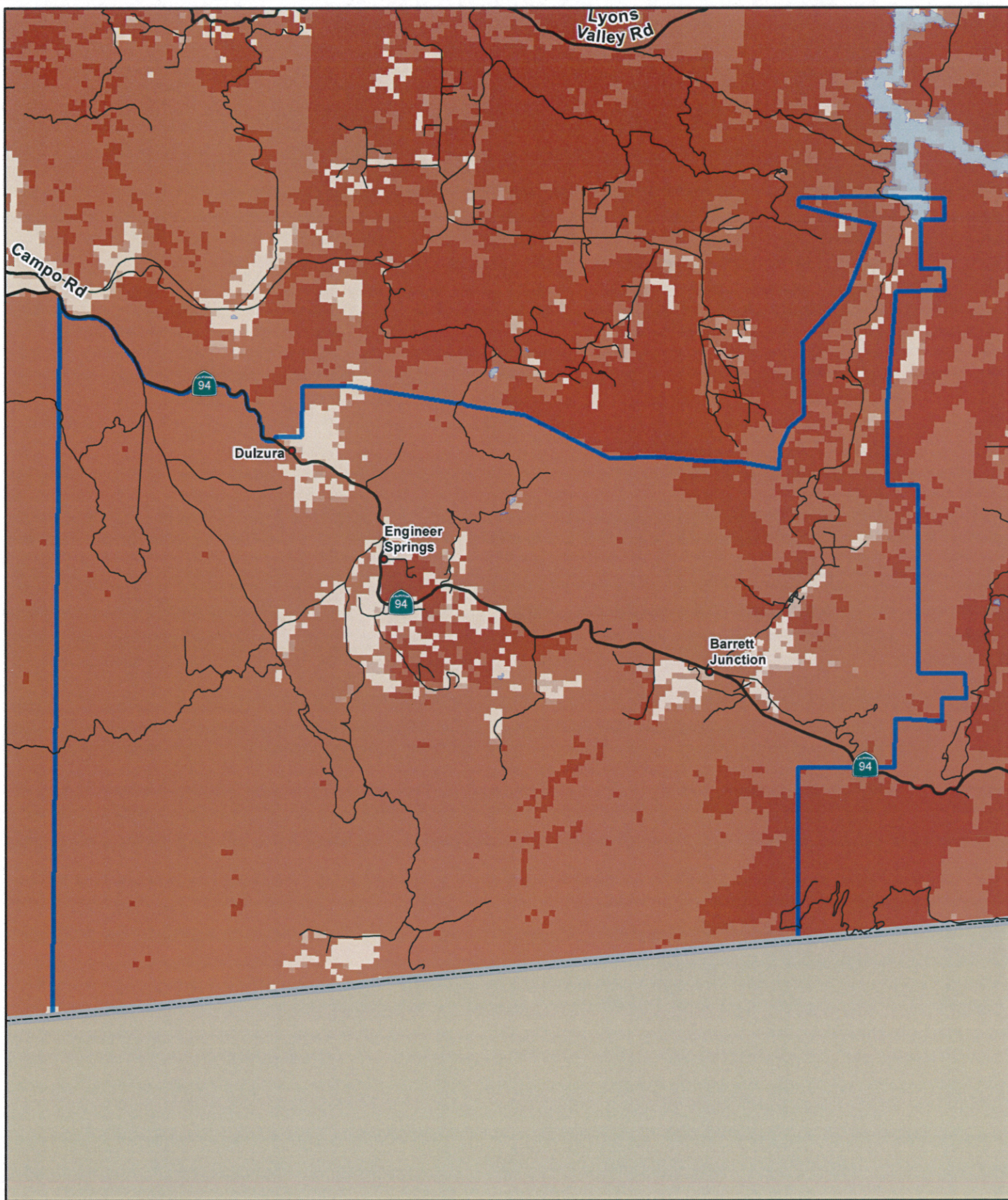
Figure 5: *Fire Threat (modeled by CDF FRAP)*

Figure 6: *Fire History 1910 – 2010 (CDF FRAP)*

Figure 7: *Wild land-Urban Interface Zone Designations (CDF FRAP)*

Figure 8: *Vegetation Classification*





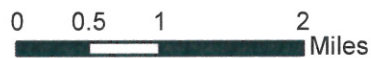
- Major Highways
- Highways
- Major Roads
- Local Streets
- Ramps, etc.
- Dulzura
- Lakes

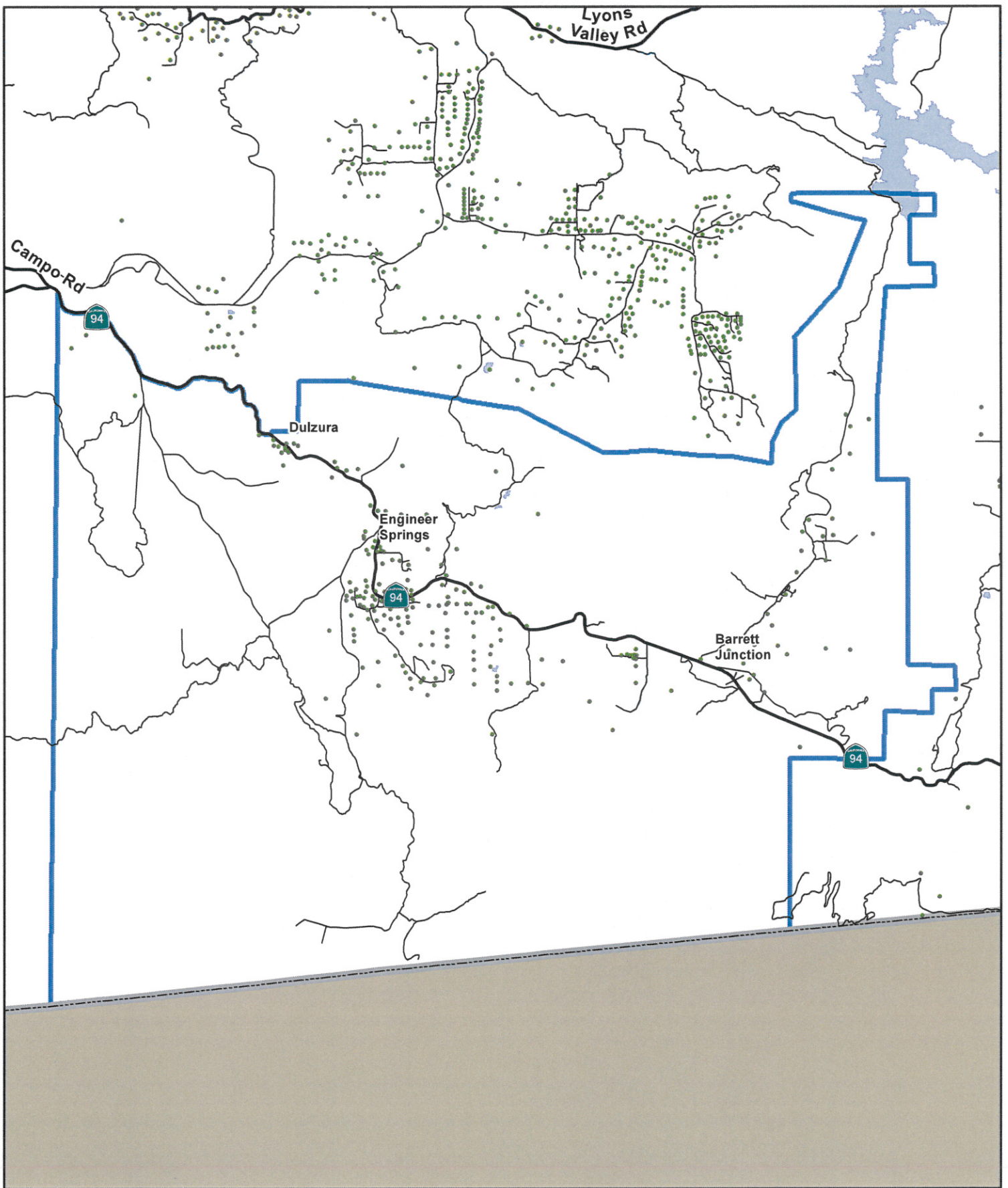
Threat

- LITTLE OR NO THREAT
- MODERATE
- HIGH
- VERY HIGH
- EXTREME

DULZURA-BARRETT CWPP

FIRE THREAT



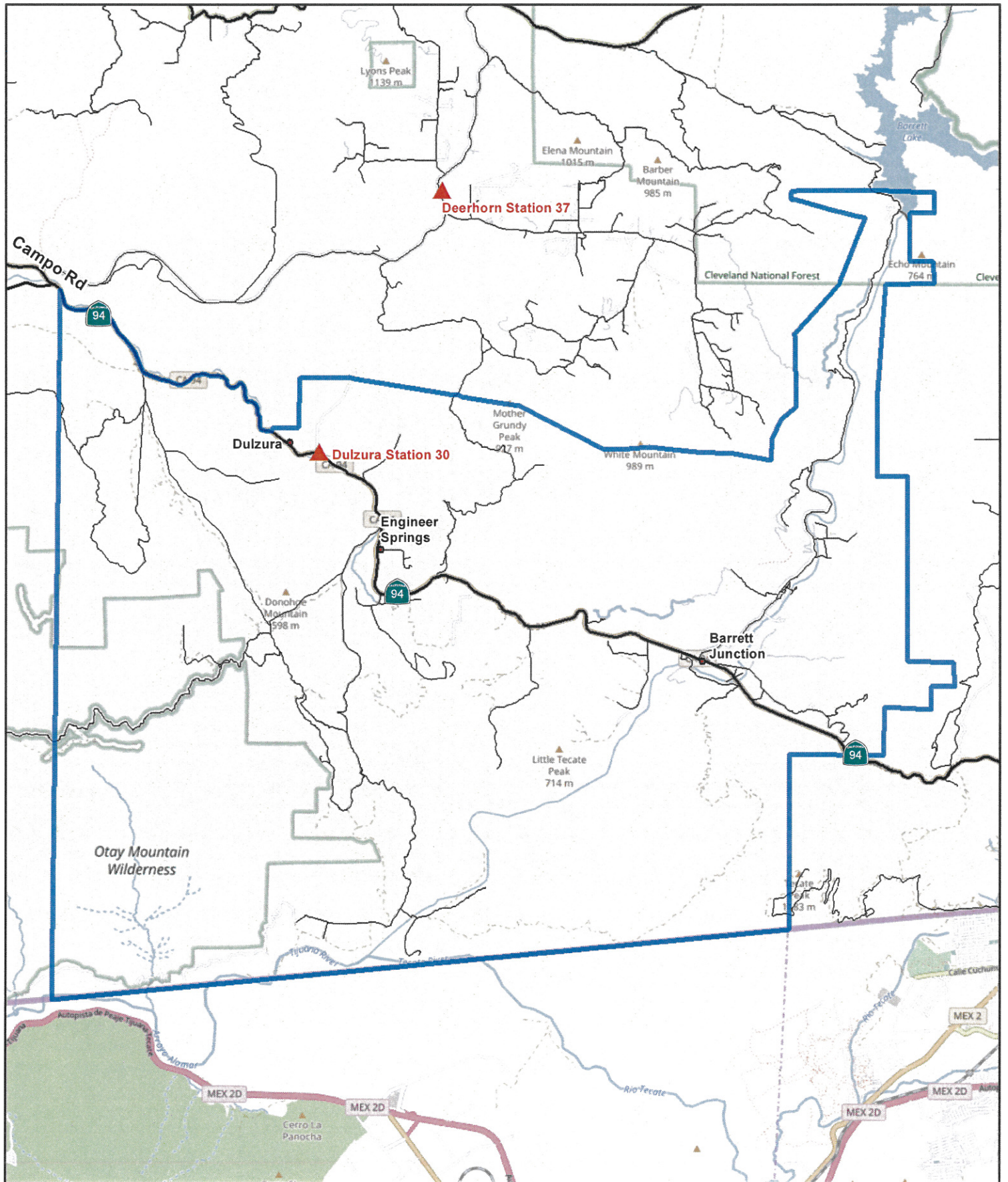


- Major Highways
- Highways
- Major Roads
- Local Streets
- Ramps, etc.
- Dulzura
- Improvements*

DULZURA-BARRETT CWPP

ASSETS AT RISK





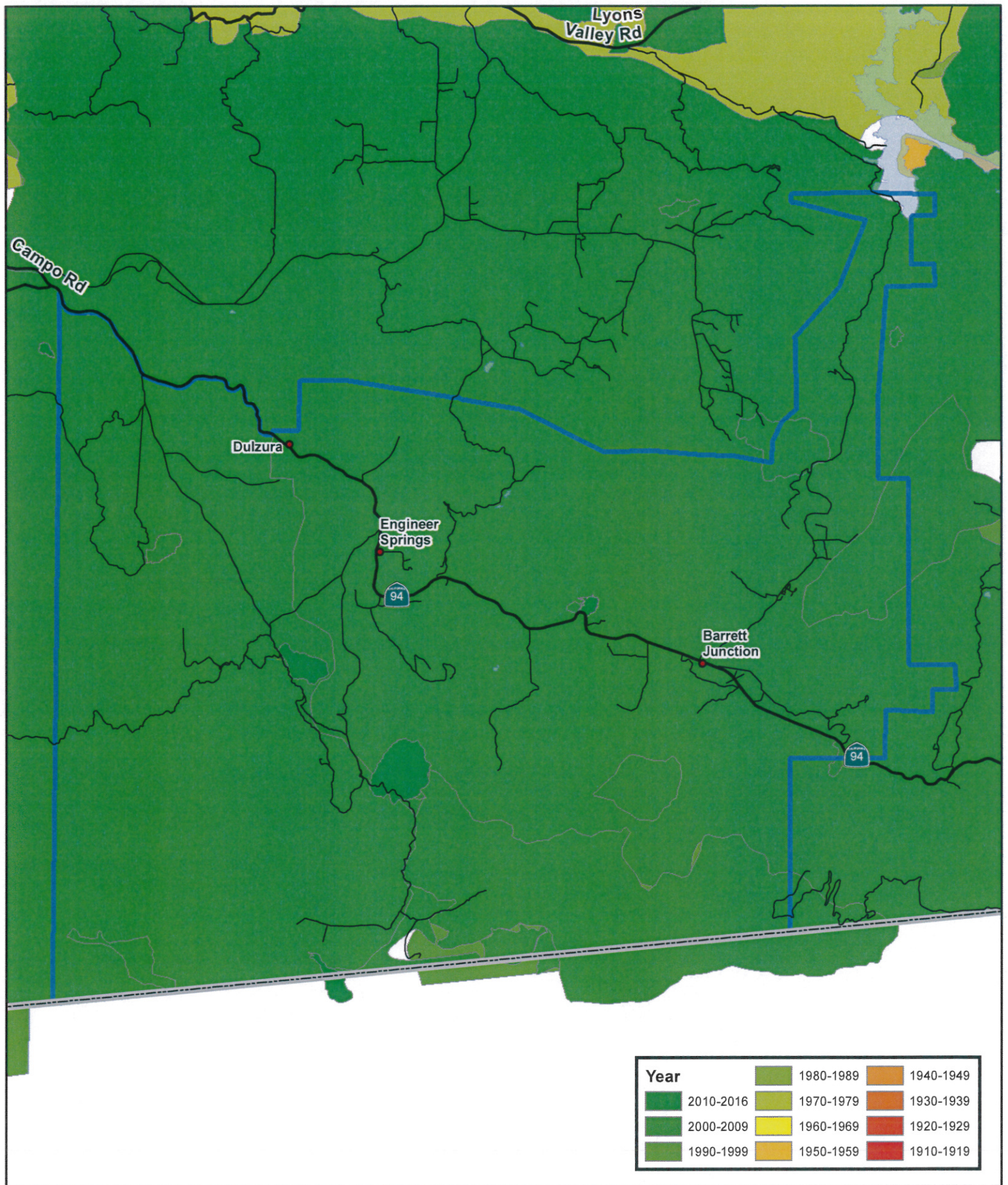
- ▲ Fire Stations
- Dulzura
- Major Highways
- Highways
- Major Roads
- Local Streets
- Ramps, etc.

DULZURA-BARRETT CWPP

COMMUNITY MAP

0 0.5 1 2
Miles



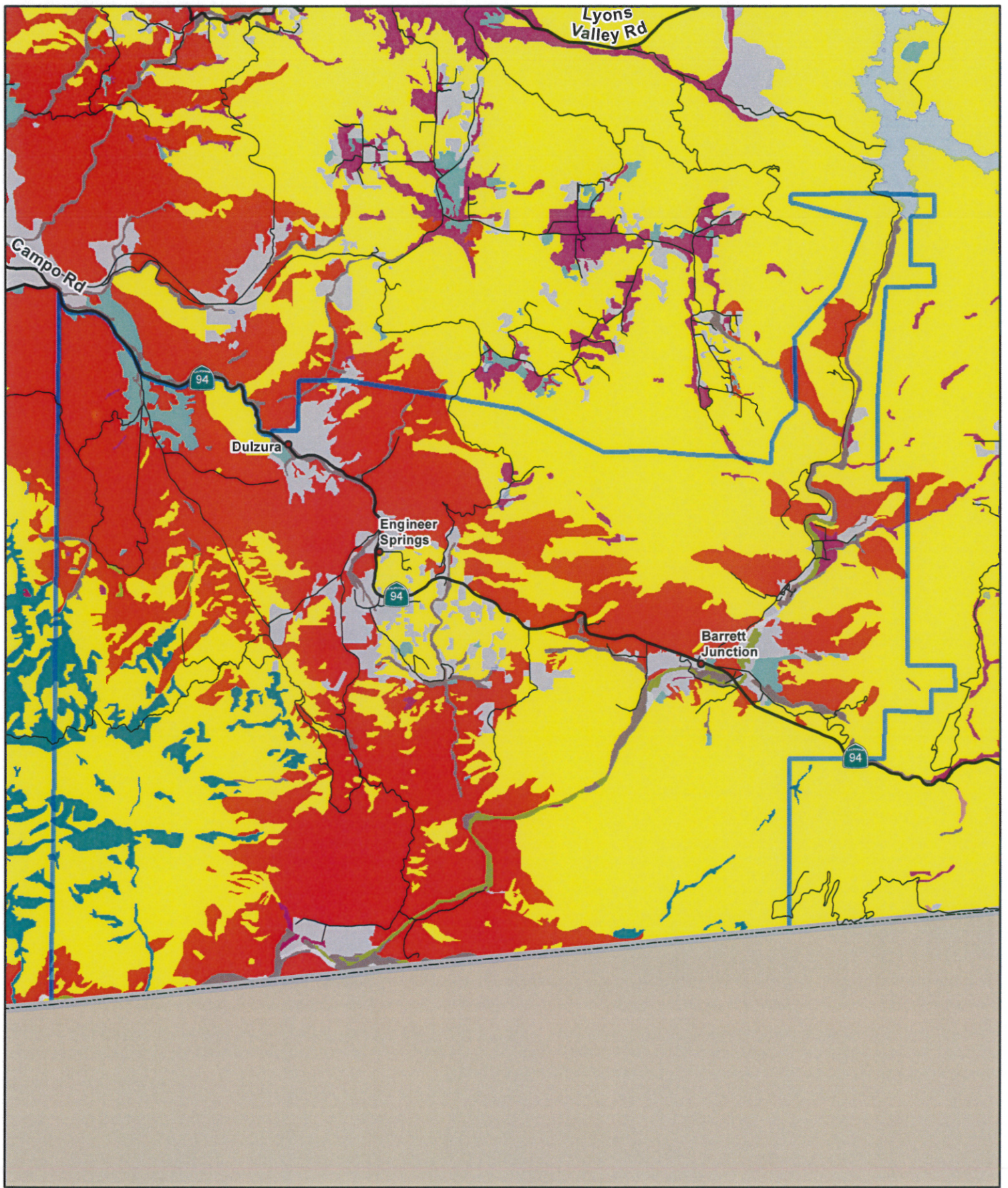


DULZURA -BARRETT CWPP

FIRE HISTORY

0 0.5 1 2 Miles





- Major Highways
- Highways
- Major Roads
- Local Streets
- Ramps, etc.
- Dulzura
- Lakes
- See legend for vegetation class descriptions

DULZURA-BARRETT CWPP

VEGETATION CLASSES

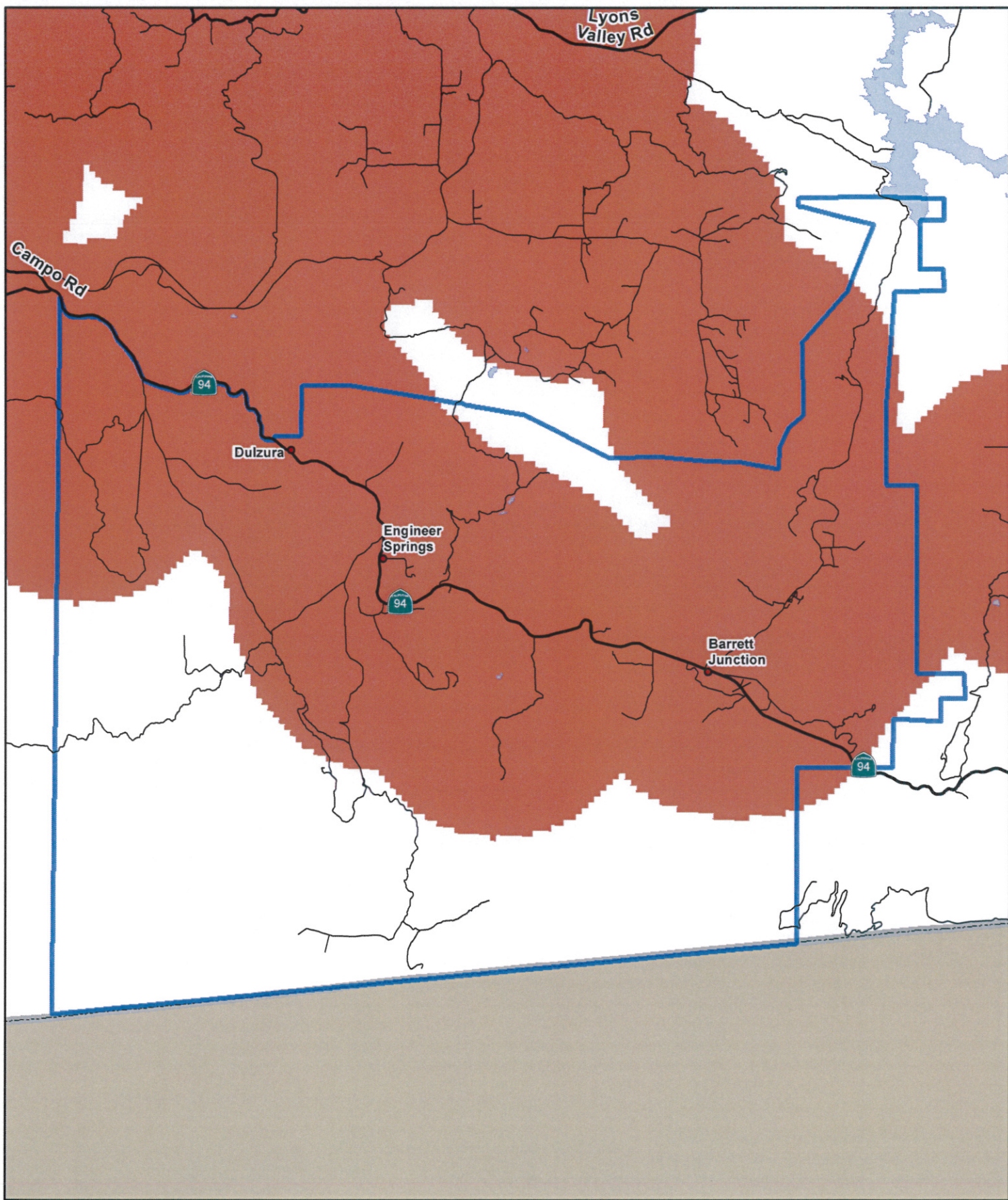
0 0.5 1 2 Miles



Vegetation Communities (Holland 95 Classification)

	<i>Southern Foredunes, Beach, Saltpan, Mudflats</i> (13300, 13400, 21230)
	<i>Coastal Sage Scrub</i> (31200, 32400, 32500, 32700, 32710, 32720)
	<i>Chaparral</i> (35000, 35200, 35210, 37000, 37120, 37121, 37122, 37130, 37131, 37132, 37200, 37210, 37220, 37300, 37500, 37520, 37530, 37540, 37830, 37900, 37A00, 37C30, 37K00, 37G00)
	<i>Grassland</i> (42000, 42100, 42110, 42120, 42200, 42300, 42400, 42470)
	<i>Riparian Scrub</i> (60000, 63000, 63300, 63310, 63320, 63410, 63810, 63820)
	<i>Riparian Woodland</i> (62000, 62300, 62400)
	<i>Riparian Forest</i> (61000, 61300, 61310, 61320, 62330, 61510, 61810, 61820)
	<i>Pinyon Juniper Woodlands</i> (72300, 72310, 72320)
	<i>Other Woodlands</i> (70000, 71000, 71100, 71160, 71161, 71162, 71180, 71181, 71182, 75100, 77000, 78000, 79000)
	<i>Oak Forest</i> (81300, 81310, 81320, 81340)
	<i>Meadow and Seep</i> (45000, 45100, 45110, 45120, 45300, 45320, 45400)
	<i>Marsh</i> (52120, 52300, 52310, 52400, 52410, 52420, 52440)
	<i>Coniferous Forest</i> (81100, 83140, 83230, 84000, 84100, 84140, 84150, 84230, 84500, 85100)
	<i>Desert Dunes</i> (22100, 22300, 24000)
	<i>Playas/Badlands/Mudhill Forbs</i> (46000, 46100)
	<i>Desert Scrub</i> (33100, 33200, 33210, 33220, 33500, 33600, 34000, 34300, 36110, 39000)
	<i>Desert Chaparral</i> (37400, 37800)
	<i>Dry Wash Woodland</i> (29000, 33230, 33300, 36120, 62200)
	<i>Water</i> (Including 11200, 13200)
	<i>Urban, Disturbed Habitat, Agriculture, Eucalyptus Woodland</i>
	<i>Not Mapped (Data Gaps)</i>

Use with Figure 8.



- Major Highways
- Highways
- Major Roads
- Local Streets
- Ramps, etc.
- Dulzura
- Lakes

Wildland-Urban Interface Zone

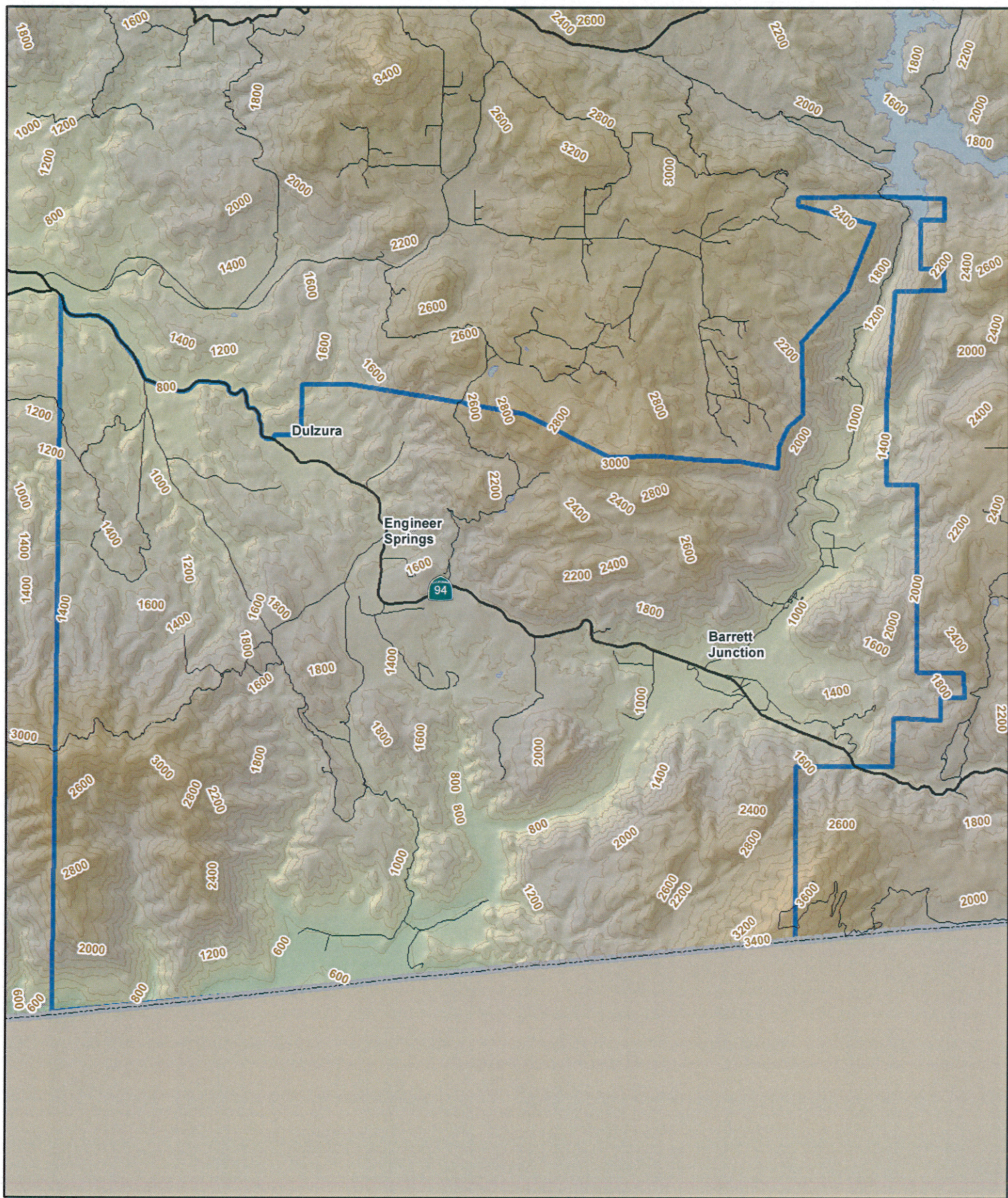
	No
	Yes

DULZURA-BARRETT CWPP

WILDLAND URBAN INTERFACE

0 0.5 1 2
Miles





DULZURA-BARRETT CWPP

- 200' Contours
-  Dulzura
-  Lakes

TOPOGRAPHY

0 0.5 1 2
Miles



CWPP Review Committee Comments

CWPP: Dulzura/ Barrett FSC

AGENCY/ REVIEWER: CWPP Review Committee

DATE: 2/8/2018

Cover/Tracking Page

- Nothing to complete – this page is for use by the Review Committee

Introduction Page:

Has the applicant done the following?:

- Insert Community name in top box
- Insert Community name in Introductory Paragraph
- Insert short introductory paragraphs describing the community
- Clarify the specific purpose(s) of why you are writing the document

AGENCY COMMENTS: In this section the committee recommends that you cite the names of the representatives that you worked directly with, along with their respected organizations. If the organization and individual did not have direct input, then strike their information from this section.

Table of Contents Page

Has the applicant included a table of contents that corresponds to the sections of the CWPP?

AGENCY COMMENTS: Section approved.

Section I: Collaboration

A. Communities/Agencies/Fire Safe Councils

Has the applicant included details about the agencies/representatives/organizations/businesses/homeowner's associations/individuals involved in the CWPP development and what their roles are?

AGENCY COMMENTS: In this section the committee recommends that you cite the names of the representatives that you worked directly with, along with their respected organizations. If the organization and individual did not have direct input then strike their information from this section.

B. Community Overview

Does the applicant provide a sufficient overview of their community including the location, any adjacent public lands, vegetation type and condition, topography, weather patterns, fire history, and the threat posed by the vegetation / fuels?

AGENCY COMMENTS: Section approved.

C. Identification of Community Values At Risk

Has the applicant described the values at risk?

Have they included a map of assets at risk in Appendix B?

AGENCY COMMENTS: The committee acknowledged that this section portrayed an accurate description of the area and the Cal Fire Strategic Plan.

D. Local Preparedness and Firefighting Capability

This section should outline which agencies respond to fire, medical, and associated emergencies, as well as wildland fires, in the community.

AGENCY COMMENTS: Section approved.

Section II: Prioritized Fuel Reduction Treatments

A. Priorities

This section should include a summary of brush management projects to reduce fuel loads along selected ingress/egress routes and homes in the community, as well as note all roads, road markers, and water sources in the community. It should also include measures to reduce structural ignitability.

AGENCY COMMENTS: The committee acknowledged that this section provides a well thought out and very focused list.

B. Existing Projects

This describing section should describe projects currently being worked on by agencies such as USFS, BLM, USFW, CALFIRE, SD County Parks, etc, and identify projects within and adjacent to the community. It should also include any projects that have been approved and are awaiting funding, or that have been proposed and are awaiting approval. The description should include the scope of these projects, including local, County, State and Federal projects.

AGENCY COMMENTS: The committee recommends that you strike any planned or future projects in this section that are not existing. Example below:

Future USFWS projects may include fuel break construction.

Section III: Treatment of Structure Ignitability

This section should describe structural challenges and explain how the community plans to address them, including how the projects specified in the **Fuel Reduction** section will reduce the ignitability of homes and other structures in the community's WUI.

It should also address home improvements or modifications that can be made to structures to reduce ignitability, listing retrofits, state approved building materials, and other improvements around the structure (e.g. removing wood / debris from around house).

AGENCY COMMENTS: Section approved.

Section IV: Signature Page

Before submitting, applicants should have gathered the following signatures:

- President of FSC submitting the CWPP
- Participating State, Local, or Tribal fire agency representatives

The Chair of the CWPP Review Committee will sign once the document has been reviewed and put forward for approval.

For the document to become an officially approved and authorized CWPP, the CAL FIRE Unit Chief's signature is required.

AGENCY COMMENTS: Section pending.

Section V: Appendices

Appendix A: List of Reference Documents

- This is where the applicant can insert a list of all reference materials/guides, etc, such as building code, fire code, and any other documents utilized in the CWPP development process.

AGENCY COMMENTS: This section needs to be updated with current codes. Please verify that all codes are up-to-date. Here are two updates for you to correct:

2. County of San Diego Consolidated Fire Code (current version), available at:
<https://www.sandiegocounty.gov/content/dam/sdc/pds/docs/cosd-fire-code.pdf>

3. County of San Diego Defensible Space for Fire Protection Ordinance (current version), available at:
<https://www.sandiegocounty.gov/content/dam/sdc/sdcfa/documents/prevention/2011-defensible-space-ordinance.pdf>

CWPP meeting tracking documents

- Applicant should insert a list of all meetings, dates and attendees held in the planning and writing of the CWPP document

AGENCY COMMENTS: The committee recommends that an attendance sign-in sheet is submitted, even if it is a one-to-one meeting.

Appendix B: Maps

- Insert all maps listed in the Table of Contents
- Appendix B should include the following:
 1. *Area Map*
 2. *Assets at Risk Map*
 3. *Communities Map*
 4. *Topographic Map*
 5. *Fire Threat Map*
 6. *Fire History Map*
 7. *WUI Zone Map*
 8. *Vegetation Map*

AGENCY COMMENTS: The committee noticed that there is boundary line overlap between Outer Jamul and Dulzura / Barrett, this will need to be fixed and re-submitted prior to approval of this CWPP.

Appendix C: Authors Contact Information

- List of CWPP authors names and contact information

AGENCY COMMENTS: Section approved.

Appendix D & E Amendments

- Insert future amendments
- Insert community name
- Insert date submitted
- Insert revisions by Section – include only Sections with revisions
- Insert Amendment author's names and contact information
- Insert page numbers in Amendment table of Contents

AGENCY COMMENTS: Strike pages 15,16,17, from this document because they don't apply.

THE DRAFT CWPP IS: (Circle one)

Not approved / Approved as presented / Approved with revisions

By consensus of the committee, which revisions are necessary for approval?

All revisions suggested above