

# Outer Jamul

## Community Wildfire Protection Plan

San Diego County, California

### Document Tracking

(for use by CWPP Review Committee):

#### ORIGINAL CWPP

Date 1<sup>st</sup> submittal received: 1/11/18 CWPP Reviewed: 2/8/18  
Revisions requested, letter to CWPP originators: 2/16/18  
Revisions received: 3/28/18  
Date CWPP approved by Committee: 4/9/18  
Final signatures obtained: 4/9/18  
CAL FIRE authorized: 4/20/18  
Approval letter to CWPP originators: 4/25/18  
PDF Posted to Website: 4/25/18

#### CWPP AMENDMENT(S)

Date Amendment received: \_\_\_\_\_, Amendment Reviewed: \_\_\_\_\_  
Requested Amendment revisions letter to CWPP originators: \_\_\_\_\_  
Revisions received: \_\_\_\_\_  
Date Amendment approved by Committee: \_\_\_\_\_  
  
Local signatures obtained on Reviewed/Approved Document: \_\_\_\_\_  
CAL FIRE final signature/authorization: \_\_\_\_\_  
Approval letter to CWPP originators: \_\_\_\_\_  
PDF Posted to Website: \_\_\_\_\_

# Outer Jamul

## *Community Wildfire Protection Plan*

San Diego County, California

### Table of Contents

<b>INTRODUCTION .....</b>	<b>2</b>
<b>SECTION I: COLLABORATION</b>	
COMMUNITY / AGENCIES / FIRE SAFE COUNCILS .....	4
COMMUNITY OVERVIEW .....	5
IDENTIFICATION OF VALUES AT RISK .....	8
LOCAL PREPAREDNESS & FIRE FIGHTING CAPABILITY .....	9
<b>SECTION II: PRIORITIZED FUEL REDUCTION TREATMENTS</b>	
PRIORITIES .....	10
EXISTING PROJECTS .....	11
<b>SECTION III: TREATMENT OF STRUCTURAL IGNITABILITY .....</b>	<b>12</b>
<b>SECTION IV: SIGNATURE PAGES</b>	
SIGNATURE PAGES .....	13
<b>SECTION V: APPENDIX A – LIST OF REFERENCES .....</b>	<b>15</b>
<b>SECTION V: APPENDIX B – - CWPP meeting tracking documents .....</b>	<b>16</b>
<b>SECTION V: APPENDIX C – MAPS .....</b>	<b>17</b>
<b>SECTION V: APPENDIX D and E – Amendments, etc. ....</b>	<b>18</b>
<b>SECTION V: APPENDIX F - Added risk to community values,     Sunrise Powerlink transmission lines.....</b>	<b>20</b>
<b>ADDENDUM – AUTHOR'S CONTACT INFORMATION</b>	

This information is not included as part of the final public CWPP document for protection of the applicant's privacy as per the Privacy of Information Act. It will be attached as a separate document for internal use only and must be updated/revised periodically throughout the life of the document.

U.S. Fish and Wildlife Service (USFWS) San Diego National Wildlife Refuge (SDNWR) Gordon Tamplin, Fire Captain SDNWR Complex	Provides local information and expertise for USFWS lands and the Wildland Urban Interface, including fire prevention, fuels treatment, and land management activities.
California Department of Fish and Wildlife (CDFW) Tracy Nelson, Manager, Hollenbeck Canyon Wildlife Area (HCWA)	Provides local information and expertise for HCWA lands adjacent to OJFSC western and southern boundaries, including public land management activities
San Diego County Fire Authority Community Emergency Response Team (CERT) Teresa Greenhalgh, Local Coordinator	Provides trained local residents that can assist when needed with emergency response situations including downed powerlines, small fire extinction, basic first aid, search and rescue etc.

## SECTION I: COLLABORATION -- continued

**B. Community Overview** – Description of topography, population, climate, land uses, businesses, schools infrastructure, fire safe councils, and other applicable traits specific to this CWPP area.

Outer Jamul covers an unincorporated area of approximately 40 square miles east of the town of Jamul, San Diego County, California. Much of the west boundary butts against the Hollenbeck Canyon Wildlife area. The north boundary (south of Loveland Reservoir) is adjacent to open space administered by the County of San Diego and U.S. Fish and Wildlife Service. The eastern boundary largely abuts the Cleveland National Forest, and the southern boundary follows a topographic ridge between the Deerhorn Valley Community and a steep slope south of the ridge line (see Topographic Map, Appendix C, Figure 4).

Individual communities include Deerhorn Valley, Bratton Valley, Bee Valley, Honey Springs Ranch, Lyon's Valley, Lee Valley, Beaver Hollow, Skyline Ridge, Wisecarver, and Lawson Valley. All lie within the 91935 (Jamul, CA) zip code.

The Outer Jamul area is a mix of broad valleys, deep cut steep valleys, rugged ridge lines and mountain peaks to 3700 feet elevation. Valleys are present from 1500 to 3000 feet elevation. Most major valleys are oriented in an east/west or northeast/southwest directions. All streams in the area are ephemeral, containing water only during and shortly after rainfall events, usually in winter and spring. Stream runoff in the Lawson Valley area drains northwest into the Sweetwater River watershed. Most other streams drain west into Jamul Creek or Dulzura Creek and then to Otay Reservoir/Otay River. The Bee Valley area east of Deerhorn Valley drains into Cottonwood Creek below the Barrett Reservoir.

Fire and emergency medical services in the area are provided by San Diego County Fire Authority Station 37 at 2383 Honey Springs Road in Bratton Valley, and Lyon's Valley Cal Fire Station 32 at 17759 Skyline Truck Trail. Both stations are staffed by Cal Fire personnel. Station 37 has one type-one fire engine, one water tender, a minimum of 3 firefighters on duty 24/7, one of which is also a paramedic. Station 32 has one type-three engine, a firefighter staff of 3 minimum, all being EMTs. As needed trained CERT personnel in the area can be called upon to assist in emergencies. Law enforcement in the Outer Jamul area is conducted by the San Diego County Sheriff's Department with assistance from the California Highway Patrol and US Border Patrol.



Prior to, and during, construction of the Sunrise Powerlink, the California Public Utilities Commission (CPUC) required SDG&E to set up a sustainable yearly grant program to partially mitigate the added risk to homes near the powerline and those located in high fire threat areas that would be downwind in Santa Ana wind conditions. A homeowner grant program was initiated in 2012 to help mitigate this danger (see Appendix F).

In order to facilitate understanding of grant requirements and encourage grant application by residents, the Outer Jamul Fire Safe Council has hosted a Sunrise Powerlink Grant Program informational meetings each year at the beginning of the grant cycle since 2012. Attendance has ranged from 40 to 70 residents. Each year the Grants administrative officer has presented residents with updates and any changes to the grant program made by the governing body, Sunrise Powerlink Fire Mitigation Group (SPFMG).

**D. Local Preparedness and Firefighting Capability**— All fire jurisdictions within the area as identified by this CWPP are listed below with information as available on number of firefighting personnel and fire response vehicles:

Fire protection for the Outer Jamul CWPP area is provided by the San Diego County Fire Authority and Cal Fire. Two fire stations within the Outer Jamul boundaries are:

- San Diego County Fire Authority Station 37  
2383 Honey Springs Road.  
One Type 1 engine, 1 water tender  
minimum 3 firefighter/EMTs, minimum one Paramedic  
Staffed by Cal Fire.
- Cal Fire Lyon's Valley Station 32  
17759 Skyline Truck Trail  
One Type 3 engine  
minimum 3 firefighter/EMTs

## **B. Existing Projects**

The Outer Jamul Fire Safe Council and collaborating groups and citizens support continuing the following projects and actions:

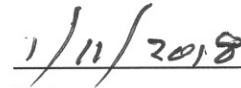
- Community education on defensible space.
- Continued maintenance of track-mounted chipper delivered and lent to area residents for chipping of yard waste, tree branches, and shrubs.
- Continued maintenance of professional weed whackers to area residents for weed abatement and defensible space.
- Yearly well-attended meetings and follow-up to help residents understand and apply for the Sunrise Powerlink Grant program.
- Continued assistance to elderly and physically challenged residents to create defensible space.
- Encourage installation of Fire Code compliant address signs.
- Continue to fund WUI fire behavior and situational awareness workshops.
- Hold "Ready Set Go" informational meetings.
- Hold large animal evacuation informational meetings.
- Purchase and placement of "WILDFIRE DANGER AREA" reflective signs on key properties near high traffic roadways.

**The Community Wildfire Protection Plan as developed for the Outer Jamul CWPP:**

- Was collaboratively developed, and meets the intent of the Healthy Forest Restoration Act (HFRA) in emphasizing the need for agencies to work collaboratively with communities in developing hazardous fuel reduction projects, and places priority on treatment areas identified by communities themselves in a CWPP. Interested parties and federal land management agencies in the vicinity of this CWPP have been consulted.
- Identifies and prioritizes areas for hazardous fuel reduction treatments and recommends the types and methods of treatment that will protect areas within this CWPP.
- Recommends measures to reduce ignitability of structures throughout the area addressed by the plan.
- Is intended for use as a planning and assessment tool only, utilizing a compilation of community issues/goals and projected fire mitigation strategies. The CWPP is not to be construed as indicative of project "activity" as defined under the "Community Guide to the California Environmental Quality Act, Chapter Three, Projects Subject to CEQA." Per the Community Guide, Section 3.1.1, "CEQA only applies to public agency decisions to approve, or actions to carry out, a discretionary project." Any actual project activities meeting this definition of project activity and undertaken by the CWPP participants or agencies listed shall meet with local, state and federal environmental compliance requirements.



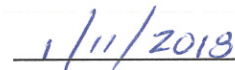
**Outer Jamul Fire Safe Council**  
Thomas Lamb, President



**Date**



**Cal Fire**  
Mike White, Battalion Chief



**Date**

**SECTION IV: SIGNATORS - page 2**

**This Community Wildfire Protection Plan has been developed for the communities in Outer Jamul**

This CWPP was reviewed and recommended for approval by the San Diego Community Wildfire Protection Plan Review Committee as demonstrated by the signature below.

  
\_\_\_\_\_  
**Chair of CWPP Review Committee**  
(name)

4-9-18  
**Date**

The CAL FIRE Unit Chief has final signing authority on CWPPs in San Diego County. The signature below attests that the standards listed in the section above and the content of this Community Wildfire Protection Plan are proposed to be met and mutually accepted:

  
\_\_\_\_\_  
**STATE AGENCY (authorizing entity — required for finalization)**

4-20-2018  
**Date**

California Department of Forestry and Fire Protection (CAL FIRE)  
Monte Vista Unit  
*Tony Mechem, Unit Chief*

**Documentation Affecting Fuels Reduction, Building Construction, and Community Fire Protection**

**LIST OF REFERENCES:**

1. County of San Diego Building Code, available at: <http://www.sandiegocounty.gov/content/sdc/pds/bldg.html>
2. County of San Diego Consolidated Fire Code , available at:  
<https://www.sandiegocounty.gov/content/dam/sdc/pds/docs/cosd-fire-code.pdf>
3. County of San Diego Code of Regulatory Ordinances, Title 6 Health and Sanitation, Division 8. Sewage and Refuse Disposal, Chapter 4. Removal of Combustible Vegetation and Other Flammable Materials (current code).
4. County of San Diego, Multi-Jurisdictional Hazard Mitigation Plan (2010), available at:  
<http://www.sandiegocounty.gov/content/dam/sdc/oes/docs/2010-HazMit-Final-August-2010.pdf>

County of San Diego Defensible Space for Fire Protection Ordinance, available at:  
<https://www.sandiegocounty.gov/content/dam/sdc/sdcfa/documents/prevention/2011-defensible-space-ordinance.pdf>

CAL FIRE Fire and Resource Assessment Program (FRAP) <http://frap.fire.ca.gov> for additional maps, data and documents

5. <http://www.readyforwildfire.org>
6. [www.livingwithfire.com](http://www.livingwithfire.com)
7. [www.firesafecouncil.org](http://www.firesafecouncil.org)
8. [www.firesafesdcounty.org](http://www.firesafesdcounty.org)

Figure 1: *Area Map*

Figure 2: *Communities Map*

Figure 3: *Assets at Risk*

Figure 4: *USGS Topographic Map*

Figure 5: *Fire Threat (modeled by CDF FRAP)*

Figure 6: *Fire History 1910 – 2010 (CDF FRAP)*

Figure 7: *Wild land-Urban Interface Zone Designations (CDF FRAP)*

Figure 8: *Vegetation Classification*

Figure 9: *Vegetation Classification Key*

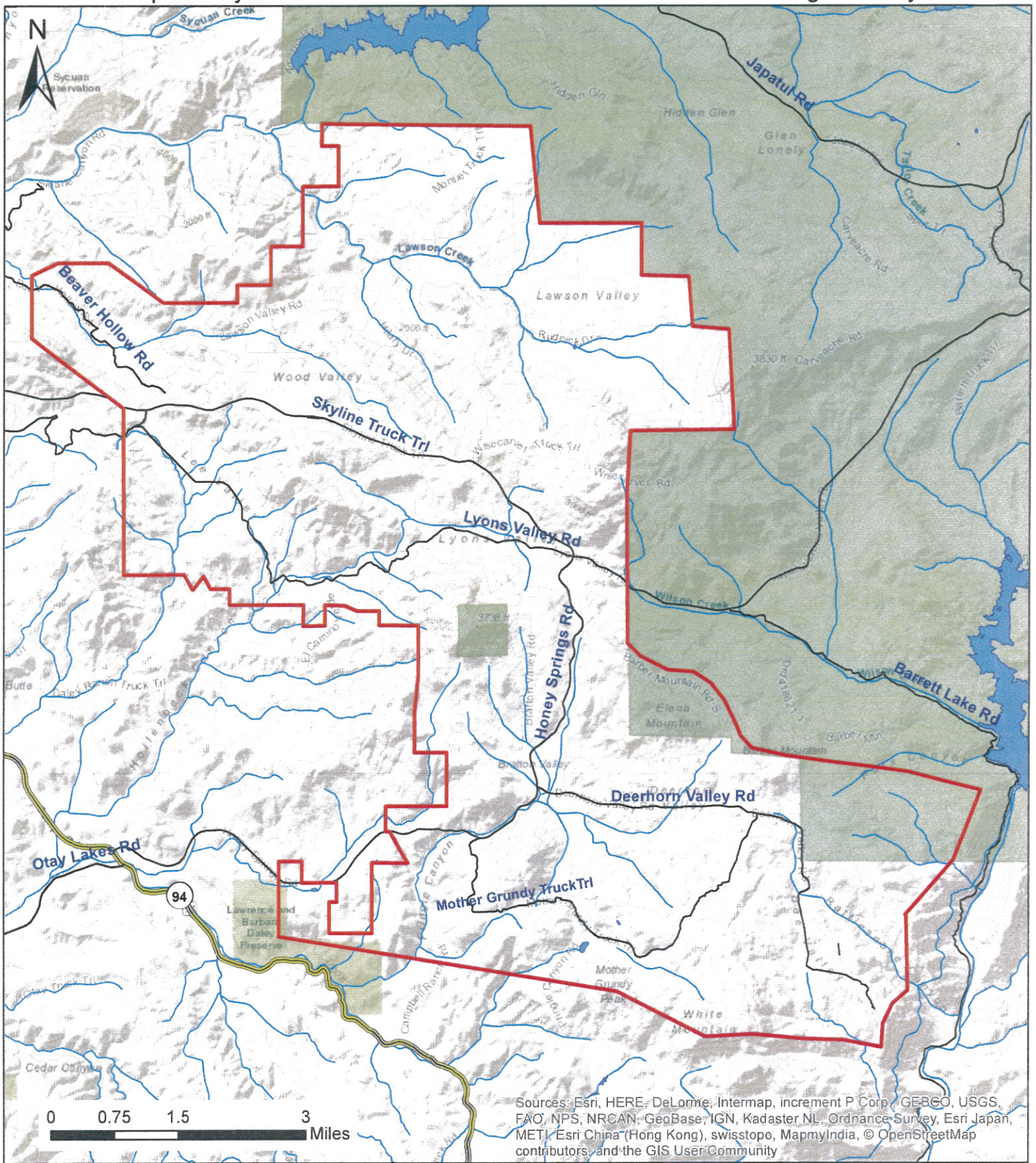
Figure 10: *Route of Sunrise Powerlink transmission lines*









# Area Map - Outer Jamul CWPP

## Figure 1

Prepared by: Resource Conservation District of Greater San Diego County

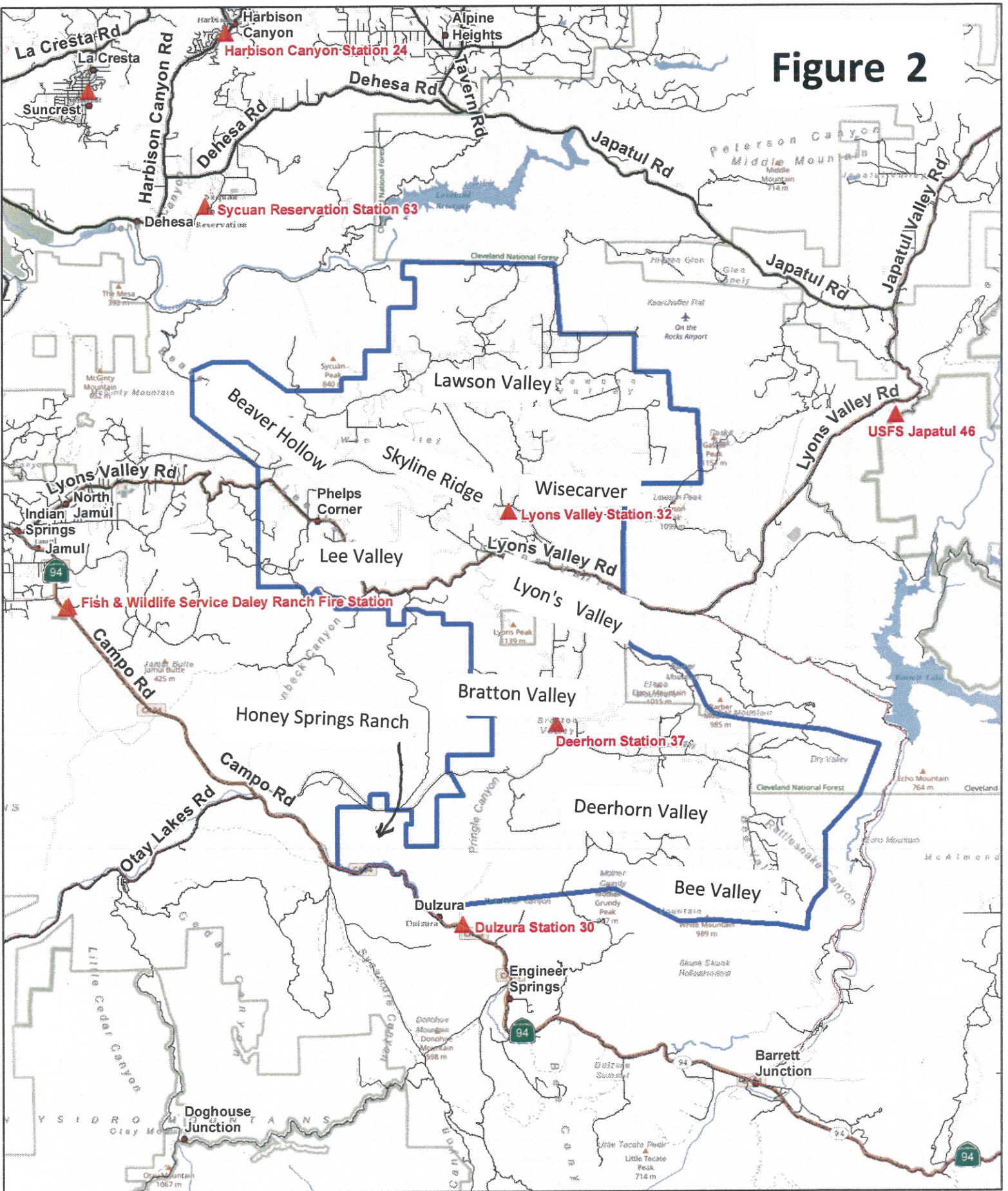


Sources: Esri, HERE, DeLorme, Intermap, increment P Corp., GEBCO, USGS, FAO, NPS, NRCAN, GeoBase, IGN, Kadaster NL, Ordnance Survey, Esri Japan, METI, Esri China (Hong Kong), swisstopo, MapmyIndia, © OpenStreetMap contributors, and the GIS User Community

- |   |  |   |
|---|--|---|
|  Outer Jamul Fire Safe Council |  State Route 94 |  Lakes   |
|  Cleveland National Forest     |  Major Roads    |  Streams |



# Figure 2



- ▲ Fire Stations
- Outer Jamul
- Major Highways
- Highways
- Major Roads
- Local Streets
- Ramps, etc.

OUTER JAMUL CWPP

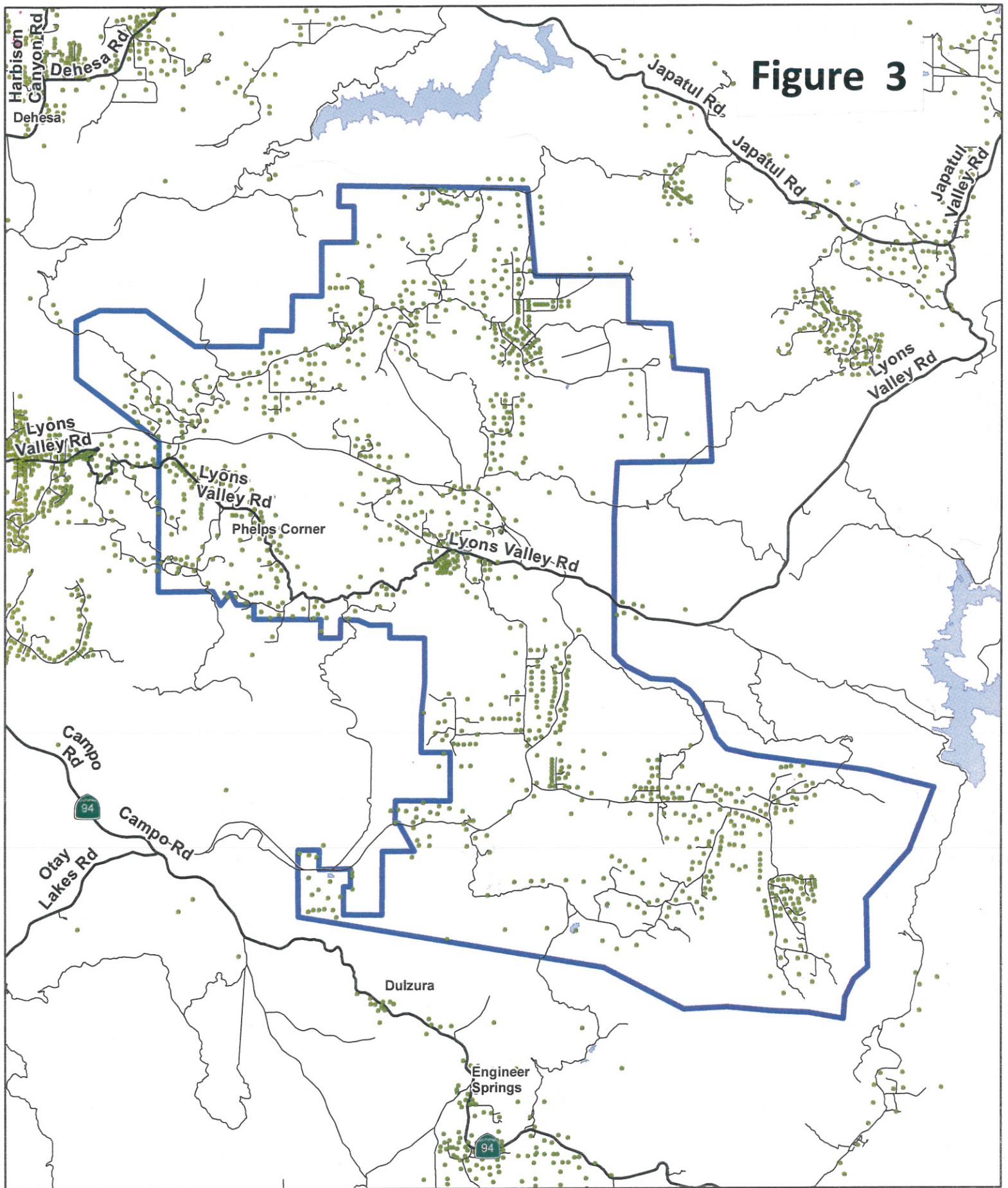
COMMUNITY MAP

0 1 2 4 Miles





Figure 3



- Major Highways
- Highways
- Major Roads
- Local Streets
- Ramps, etc.
- Outer Jamul
- Improvements\*

OUTER JAMUL CWPP

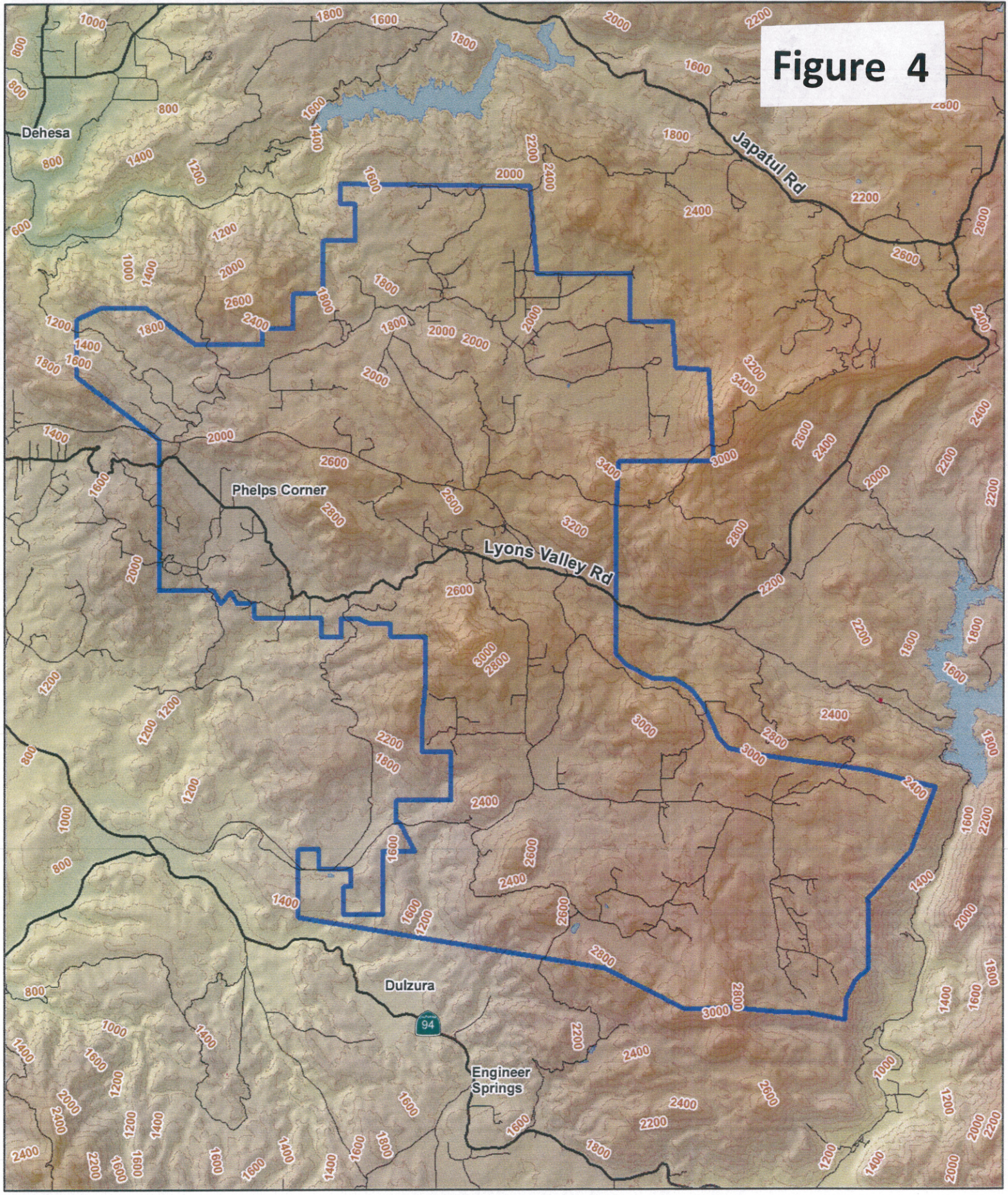
ASSETS AT RISK

0 0.5 1 2 Miles





Figure 4



- 200' Contours
- Outer Jamul
- Lakes

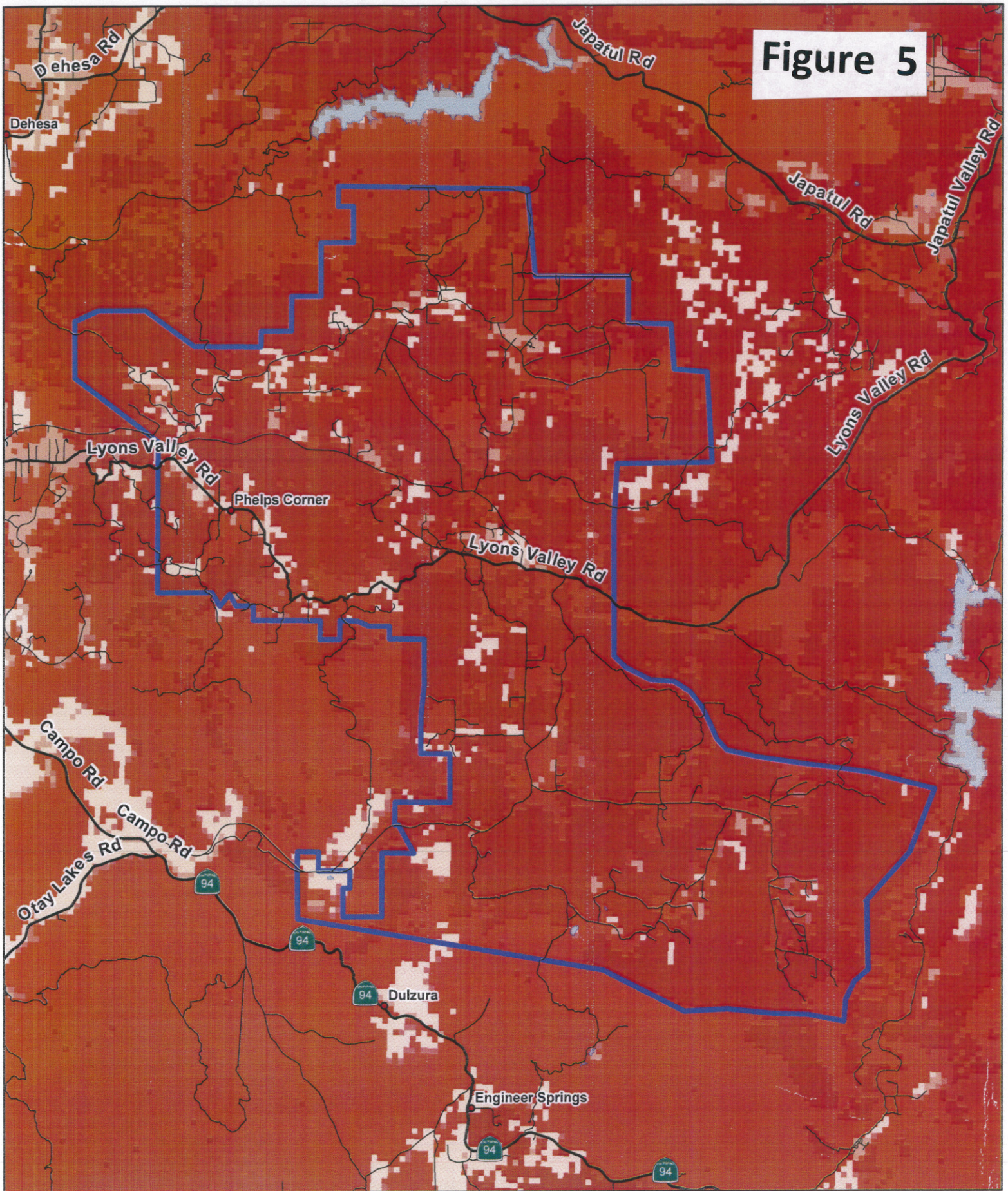
OUTER JAMUL CWPP

TOPOGRAPHY





**Figure 5**



- Major Highways
- Highways
- Major Roads
- Local Streets
- Ramps, etc.
- Outer Jamul
- Lakes

**Threat**

- LITTLE OR NO THREAT
- MODERATE
- HIGH
- VERY HIGH
- EXTREME

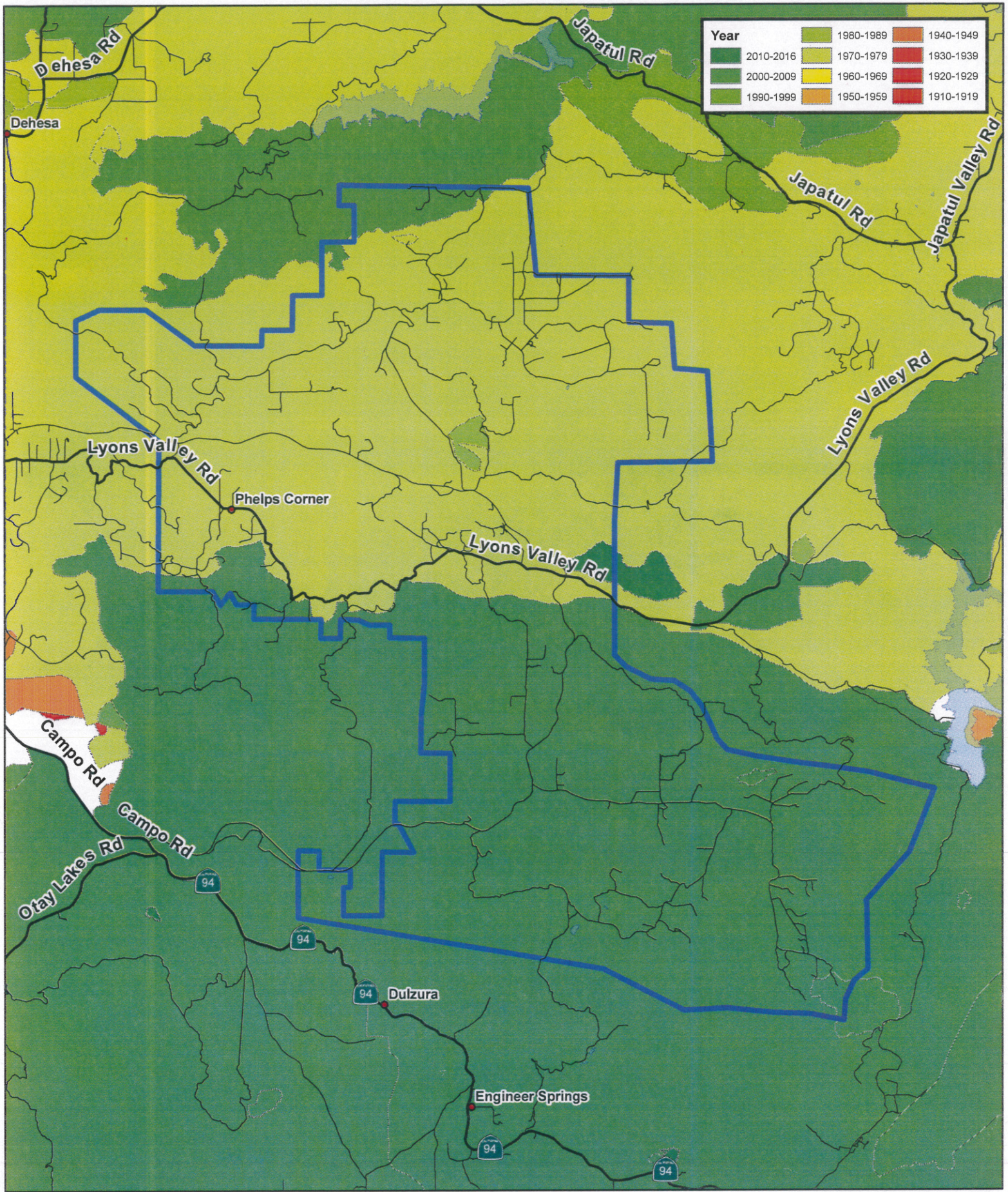
**OUTER JAMUL CWPP**

**FIRE THREAT**

0 0.5 1 2 Miles







- Major Highways
- Highways
- Major Roads
- Local Streets
- Ramps, etc.
- Outer Jamul
- Lakes

## OUTER JAMUL CWPP

### FIRE HISTORY

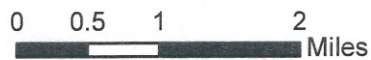
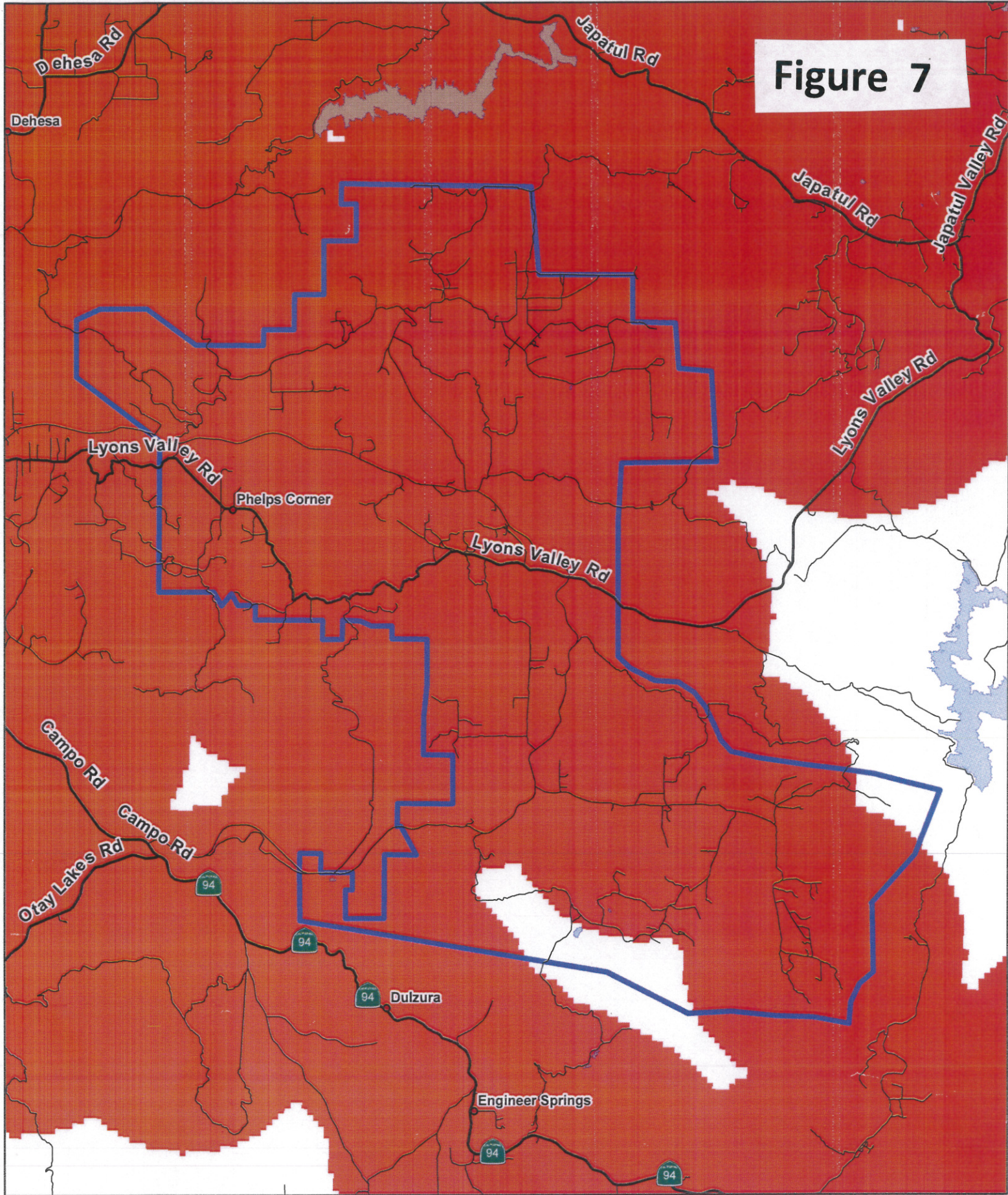




Figure 7



- Major Highways
- Highways
- Major Roads
- Local Streets
- Ramps, etc.
- Mount Laguna
- Lakes

**Wildland-Urban Interface Zone**  
No  
Yes

OUTER JAMUL CWPP

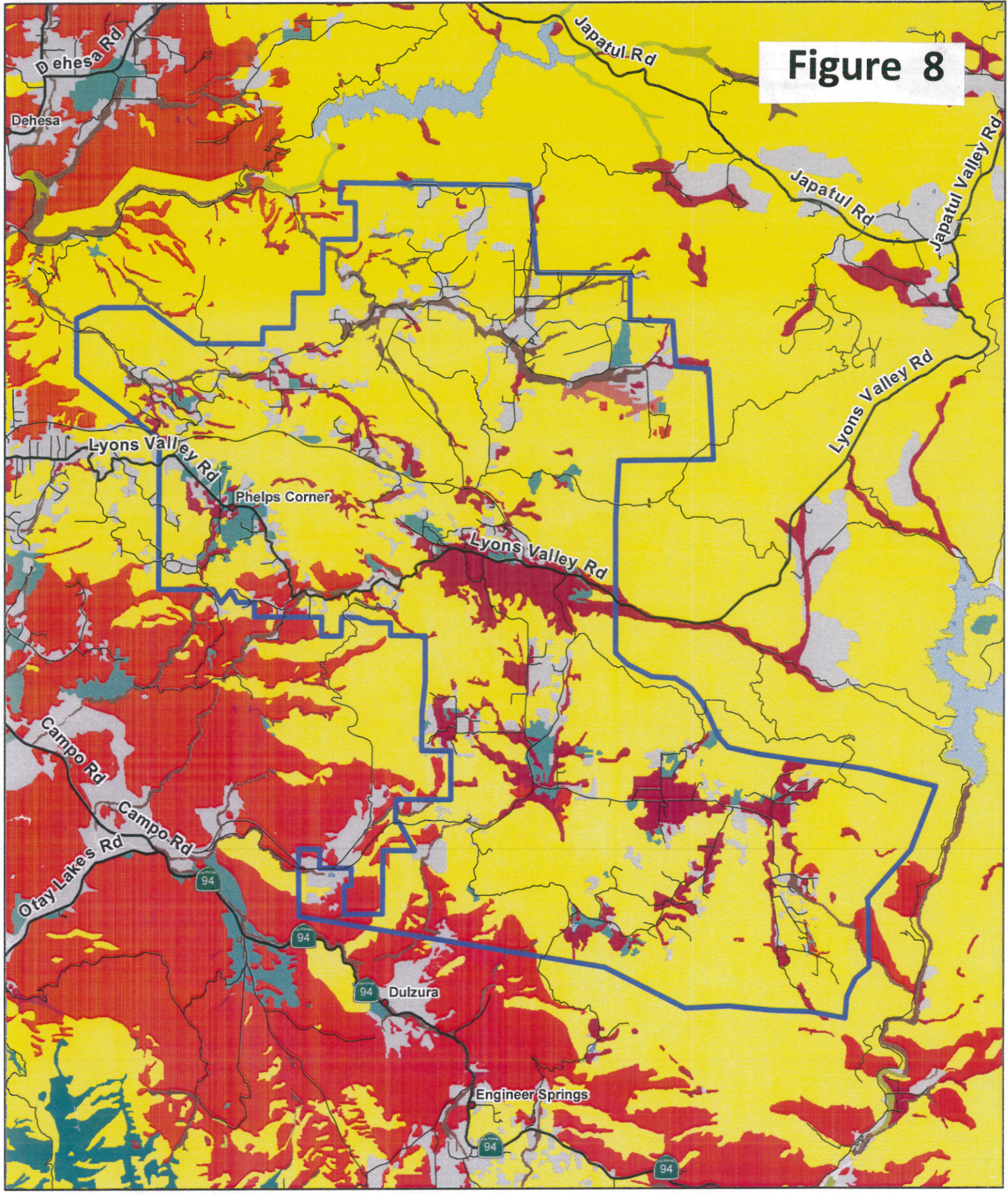
WILDLAND URBAN INTERFACE

0 0.5 1 2 Miles





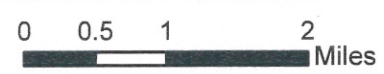
Figure 8



- Major Highways
- Highways
- Major Roads
- Local Streets
- Ramps, etc.
- Outer Jamul
- Lakes
- See legend for vegetation class descriptions



OUTER JAMUL CWPP

VEGETATION CLASSES





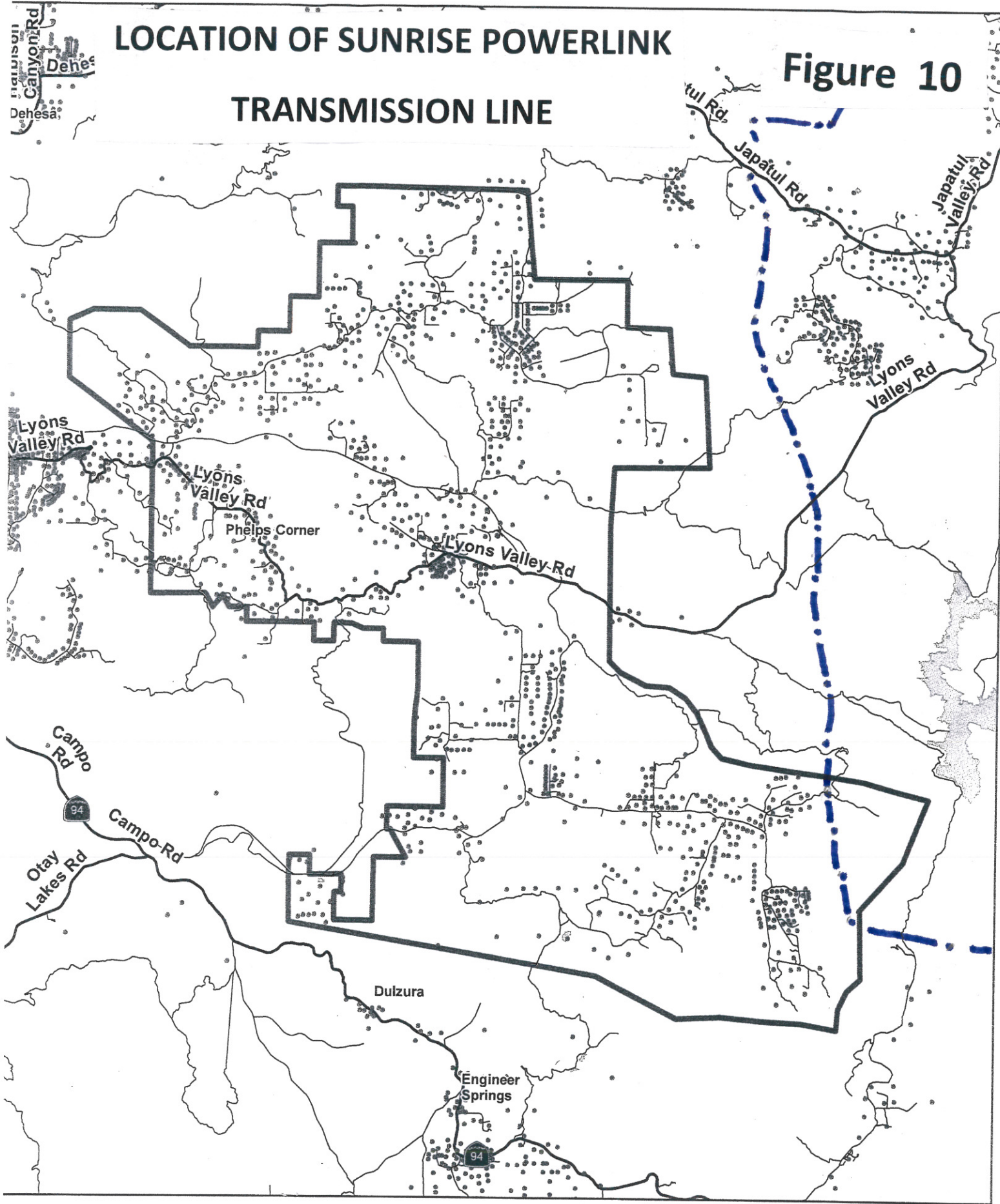
## Vegetation Communities (Holland 95 Classification)

	<i>Southern Foredunes, Beach, Saltpan, Mudflats</i> (13300, 13400, 21230)
	<i>Coastal Sage Scrub</i> (31200, 32400, 32500, 32700, 32710, 32720)
	<i>Chaparral</i> (35000, 35200, 35210, 37000, 37120, 37121, 37122, 37130, 37131, 37132, 37200, 37210, 37220, 37300, 37500, 37520, 37530, 37540, 37830, 37900, 37A00, 37C30, 37K00, 37G00)
	<i>Grassland</i> (42000, 42100, 42110, 42120, 42200, 42300, 42400, 42470)
	<i>Riparian Scrub</i> (60000, 63000, 63300, 63310, 63320, 63410, 63810, 63820)
	<i>Riparian Woodland</i> (62000, 62300, 62400)
	<i>Riparian Forest</i> (61000, 61300, 61310, 61320, 62330, 61510, 61810, 61820)
	<i>Pinyon Juniper Woodlands</i> (72300, 72310, 72320)
	<i>Other Woodlands</i> (70000, 71000, 71100, 71160, 71161, 71162, 71180, 71181, 71182, 75100, 77000, 78000, 79000)
	<i>Oak Forest</i> (81300, 81310, 81320, 81340)
	<i>Meadow and Seep</i> (45000, 45100, 45110, 45120, 45300, 45320, 45400)
	<i>Marsh</i> (52120, 52300, 52310, 52400, 52410, 52420, 52440)
	<i>Coniferous Forest</i> (81100, 83140, 83230, 84000, 84100, 84140, 84150, 84230, 84500, 85100)
	<i>Desert Dunes</i> (22100, 22300, 24000)
	<i>Playas/Badlands/Mudhill Forbs</i> (46000, 46100)
	<i>Desert Scrub</i> (33100, 33200, 33210, 33220, 33500, 33600, 34000, 34300, 36110, 39000)
	<i>Desert Chaparral</i> (37400, 37800)
	<i>Dry Wash Woodland</i> (29000, 33230, 33300, 36120, 62200)
	<i>Water</i> (Including 11200, 13200)
	<i>Urban, Disturbed Habitat, Agriculture, Eucalyptus Woodland</i>
	<i>Not Mapped (Data Gaps)</i>

Use with Figure 8.

# LOCATION OF SUNRISE POWERLINK TRANSMISSION LINE

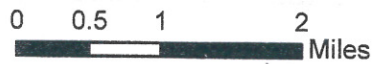
Figure 10



- Major Highways
- Highways
- Major Roads
- Local Streets
- Ramps, etc.
- Outer Jamul
- Improvements\*

OUTER JAMUL CWPP

## SUNRISE POWERLINK ROUTE



***Community Wildfire Protection Plan Amendment***  
**For**  
**Outer Jamul**

Date Amendment Submitted: \_\_\_\_\_

**Table of Contents**  
**(list only those sections as amended)**

**INTRODUCTION** .....

**SECTION I: COLLABORATION**

    COMMUNITY / AGENCIES / FIRE SAFE COUNCILS .....

    COMMUNITY OVERVIEW .....

    IDENTIFICATION OF VALUES AT RISK.....

    LOCAL PREPAREDNESS & FIRE FIGHTING CAPABILITY .....

**SECTION II: PRIORITIZED FUEL REDUCTION TREATMENTS**

    PRIORITIES .....

    EXISTING PROJECTS.....

**SECTION III: TREATMENT OF STRUCTURAL IGNITABILITY** .....

**SECTION IV: SIGNATURE PAGES**

    SIGNATURE PAGES .....

**SECTION V: APPENDIX A – LIST OF REFERENCE DOCUMENTS** .....

**SECTION VI: APPENDIX B - MAPS** .....

***Community Wildfire Protection Plan Amendment***  
**For**  
**Outer Jamul**

Date Amendment Submitted: \_\_\_\_\_

**Table of Contents**  
(list only those sections as amended)

**INTRODUCTION** .....

**SECTION I: COLLABORATION**

    COMMUNITY / AGENCIES / FIRE SAFE COUNCILS .....

    COMMUNITY OVERVIEW .....

    IDENTIFICATION OF VALUES AT RISK.....

    LOCAL PREPAREDNESS & FIRE FIGHTING CAPABILITY .....

**SECTION II: PRIORITIZED FUEL REDUCTION TREATMENTS**

    PRIORITIES .....

    EXISTING PROJECTS.....

**SECTION III: TREATMENT OF STRUCTURAL IGNITABILITY**.....

**SECTION IV: SIGNATURE PAGE(S)**

    SIGNATURE PAGE(S).....

**SECTION V: APPENDIX A – LIST OF REFERENCE DOCUMENTS** .....

**SECTION VI: APPENDIX B - MAPS** .....



## Outer Jamul CWPP

### APPENDIX F

#### Added risk to community values,

#### Sunrise Powerlink transmission lines

During planning and construction of the Sunrise Powerlink, the California Public Utilities Commission (CPUC) set forth a recommendation (Decision 08-12-058) with San Diego Gas and Electric Co. (SDG&E) that included requiring significant mitigation measures to address increases in wildfire risk due to the presence of the powerline. Major concerns were fire ignition during Santa Ana wind-driven fires and limitations of fire fighting measures under, over, and near the powerline.

Because some communities (including all of Outer Jamul) are in close proximity to the powerline, CPUC Mitigation Measure F-1e urged SDG&E to set up a "defensible space grants fund" in order to "assist in the maintenance of defensible space requirements and in the implementation of other fire-safe measures at the private residences most at risk of a project-related fire". It was determined that approximately 1400 homes in Outer Jamul and other communities in close proximity to the Sunrise Powerlink were to be assisted in defensible space and structural hardening.

SDG&E established a fund as per CPUC guidelines. It is estimated that, at present, approximately 3 million dollars are earmarked each year for the Sunrise Powerlink Defensible Space Grant Fund. CPUC Mitigation Measure F-1e requires similar yearly fund donations for the next approximately 52 years, or the working life of the powerline.

In November 2011 a memorandum of understanding (MOU) was signed by SDG&E and 7 (6 at present) different fire agency partners. This group is tasked with guiding implementation of the Sunrise Powerlink Fire Mitigation Grant program following CPUC guidelines. Collectively the 6 fire agency voting members and a nonvoting SDG&E representative are designated the Sunrise Powerlink Fire Mitigation Group (SPFMG). One of 3 major MOU tasks assigned to the group was to "reduce the potential wildfire impacts to residences and other structures immediately adjacent to Sunrise" (powerline). The MOU tasks each voting agency of the SPLFMG "identifying those homeowners at highest risk of sustaining damage from an ignition related to the Sunrise Powerlink.....consistent with the standards established by the CPUC, the Decision (#08-12-058), and the MOU".