

Ramona Community Wildfire Protection Plan 2018 Amendment

SECTION V: Appendix D: 2nd Amendment 2018

Community Wildfire Protection Plan Amendment

**For
Ramona**

Date Amendment Submitted: 1-10-18

Table of Contents

(list only those sections as amended)

INTRODUCTION.....	2
SECTION I: COLLABORATION	
COMMUNITY / AGENCIES / FIRE SAFE COUNCILS	2
SECTION II: PRIORITIZED FUEL REDUCTION TREATMENTS	
PRIORITIES	3
EXISTING PROJECTS	3
SECTION III: SIGNATURE PAGES	
SIGNATURE PAGES.....	4
SECTION IV: APPENDIX B - MAPS	6
ADDENDUM	7

Ramona Community Wildfire Protection Plan 2018 Amendment

INTRODUCTION

The Ramona Community Wildfire Protection Plan (CWPP) 2018 Amendment reflects current projects and project status changes in the "*Prioritized Fuel Reduction Treatments*" section from the 2011 Ramona CWPP Amendment. Projects have been completed and the scope of the work done over the course of the project changed in some instances.

SECTION I: COLLABORATION

A: COMMUNITY / AGENCIES / FIRE SAFE COUNCILS

Representatives directly involved in the development of the *Ramona CWPP* are listed as follows:

Ramona West End Fire Safe Council:

Kristi Mansolf, President *Kristi Mansolf* Date: 1-10-18

Rob Inglis, Vice President *[Signature]* Date: 1/10/18

Larry Gordon, Treasurer *Larry Gordon* Date: 1-10-18

State and Federal Agencies:

Tim Gray, USFS

James Gannon, BLM

Randy Scales, CAL FIRE *[Signature]*

SECTION II: PRIORITIZED FUEL REDUCTION TREATMENTS – Amended 2018

The partnership that exists between the listed organizations and citizens in this CWPP allows the community of Ramona to reduce hazardous vegetative fuels that could ignite residences and commercial facilities, particularly, during Santa Ana wind fire conditions. Maintaining properties with the appropriate defensible space is a key factor to protecting lives and properties.

The CWPP is not to be construed as indicative of project "activity" as defined under the "Community Guide to the California Environmental Quality Act, Chapter Three, Projects Subject to CEQA." Any actual project activities undertaken that meet this definition of project activity and are undertaken by the CWPP participants or agencies listed shall meet with local, state and federal environmental compliance requirements.

A. Priorities for 2018:

No new projects have been identified for 2018.

B. Existing Projects/Completed Projects

1. USFS Project, in cooperation with CAL FIRE: North Ramona Community Defense Zone was completed 2013-2016. Description: The project treated mixed chaparral by mechanical means, and a fuelbreak was created from Pamo Road (SR-78, north) on the west to Sutherland Dam Road on the east. The project provides protection to the communities on the north side of Ramona. Maintenance to be done in 5 years or less.
2. BLM Project, in cooperation with CAL FIRE and the San Diego Country Estates Home Owners Association completed the San Vicente Community Defense Zone in 2011. The Community Defense Zone extended from the intersection of Vista Ramona Road along the north side of the San Diego Country Estates eastward to the National Forest boundary near the end of Ramona Oaks Road. Vegetation removal was done by cutting and chipping shrubs in a 200-foot wide defense zone. Since then, CAL FIRE has used fire crews to maintain the effectiveness of the Community Defense Zone by cutting regrowth.

The USFS extended this project, and now the Community Defense Zone extends from east to west on the south side of the base of Mt. Gower, then south to southwest to provide protection to the communities of the San Diego County Estates and Barona Mesa. The West Side Truck Trail Roadside Fuel Break project compliments the Community Defense Zone, and treated 120 acres by mechanical means. Maintenance to be done in 5 years or less.

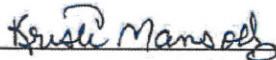
3. CAL FIRE Project: West End Ramona Community Protection Plan. CAL FIRE in cooperation with the County of San Diego and other stakeholders and the Ramona West End Fire Safe Council completed a fuel break in 2010 and maintenance was completed in 2014. The fuel break is a shaded fuel break done by hand clearing, and it runs from Kay Dee Lane on the east to Rockhouse Road on the west, protecting adjacent residential areas to the south of State Highway 67. The project benefits fire defense for the Mt. Woodson area by slowing fires advancing from the Dos Picos drainage. Maintenance to be done in 5 years or less.

Ramona Community Wildfire Protection Plan 2018 Amendment

SECTION III: SIGNATORS - page 1

The Community Wildfire Protection Plan as developed for the *Ramona CWPP*:

- Was collaboratively developed, and meets the intent of the Healthy Forest Restoration Act (HFRA) in emphasizing the need for agencies to work collaboratively with communities in developing hazardous fuel reduction projects, and places priority on treatment areas identified by communities themselves in a CWPP. Interested parties and federal land management agencies in the vicinity of this CWPP have been consulted.
- Identifies and prioritizes areas for hazardous fuel reduction treatments and recommends the types and methods of treatment that will protect areas within this CWPP.
- Recommends measures to reduce ignitability of structures throughout the area addressed by the plan.
- Is intended for use as a planning and assessment tool only, utilizing a compilation of community issues/goals and projected fire mitigation strategies. The CWPP is not to be construed as indicative of project "activity" as defined under the "Community Guide to the California Environmental Quality Act, Chapter Three, Projects Subject to CEQA." Per the Community Guide, Section 3.1.1, "CEQA only applies to public agency decisions to approve, or actions to carry out, a discretionary project." Any actual project activities meeting this definition of project activity and undertaken by the CWPP participants or agencies listed shall meet with local, state and federal environmental compliance requirements.

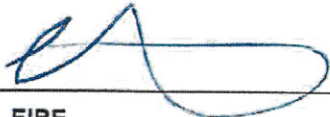


President of Fire Safe Council submitting this CWPP
(name) KRISTI MANSOLF

1-10-18

Date

Participating Local fire agency representative:



LOCAL FIRE
Ramona Fire
Adam Lambert, Chief

1/10/18

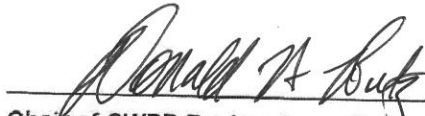
Date

Ramona Community Wildfire Protection Plan 2018 Amendment

SECTION III: SIGNATORS - page 2

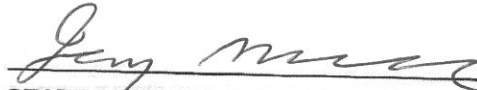
This Community Wildfire Protection Plan has been developed for the community of *Ramona*.

This CWPP was reviewed and recommended for approval by the San Diego Community Wildfire Protection Plan Review Committee as demonstrated by the signature below.


Chair of CWPP Review Committee
(name)

3-28-18
Date

The CAL FIRE Unit Chief has final signing authority on CWPPs in San Diego County. The signature below attests that the standards listed in the section above and the content of this Community Wildfire Protection Plan are proposed to be met and mutually accepted:



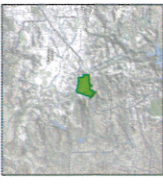
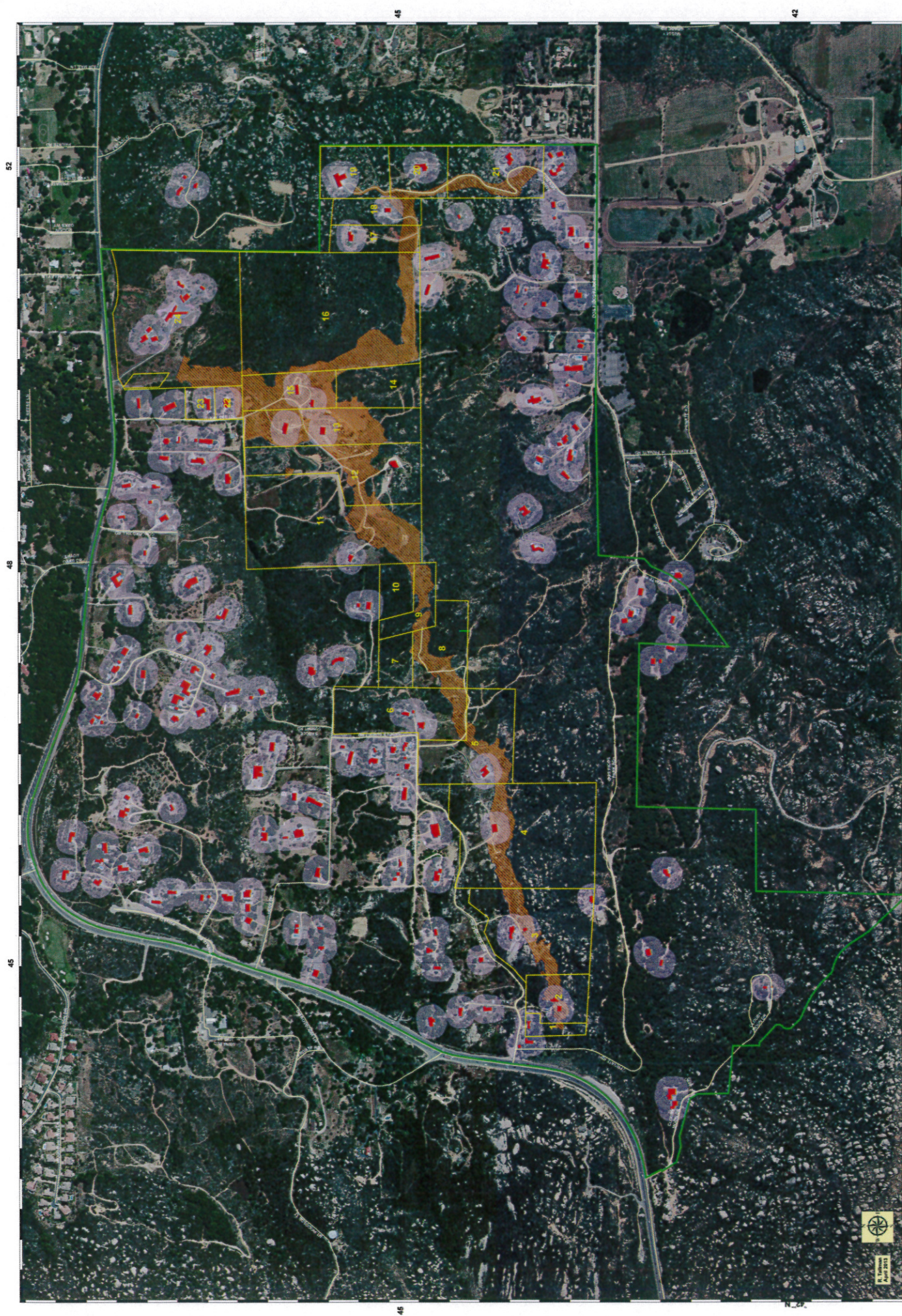
STATE AGENCY (authorizing entity — required for finalization)

4-20-2018
Date

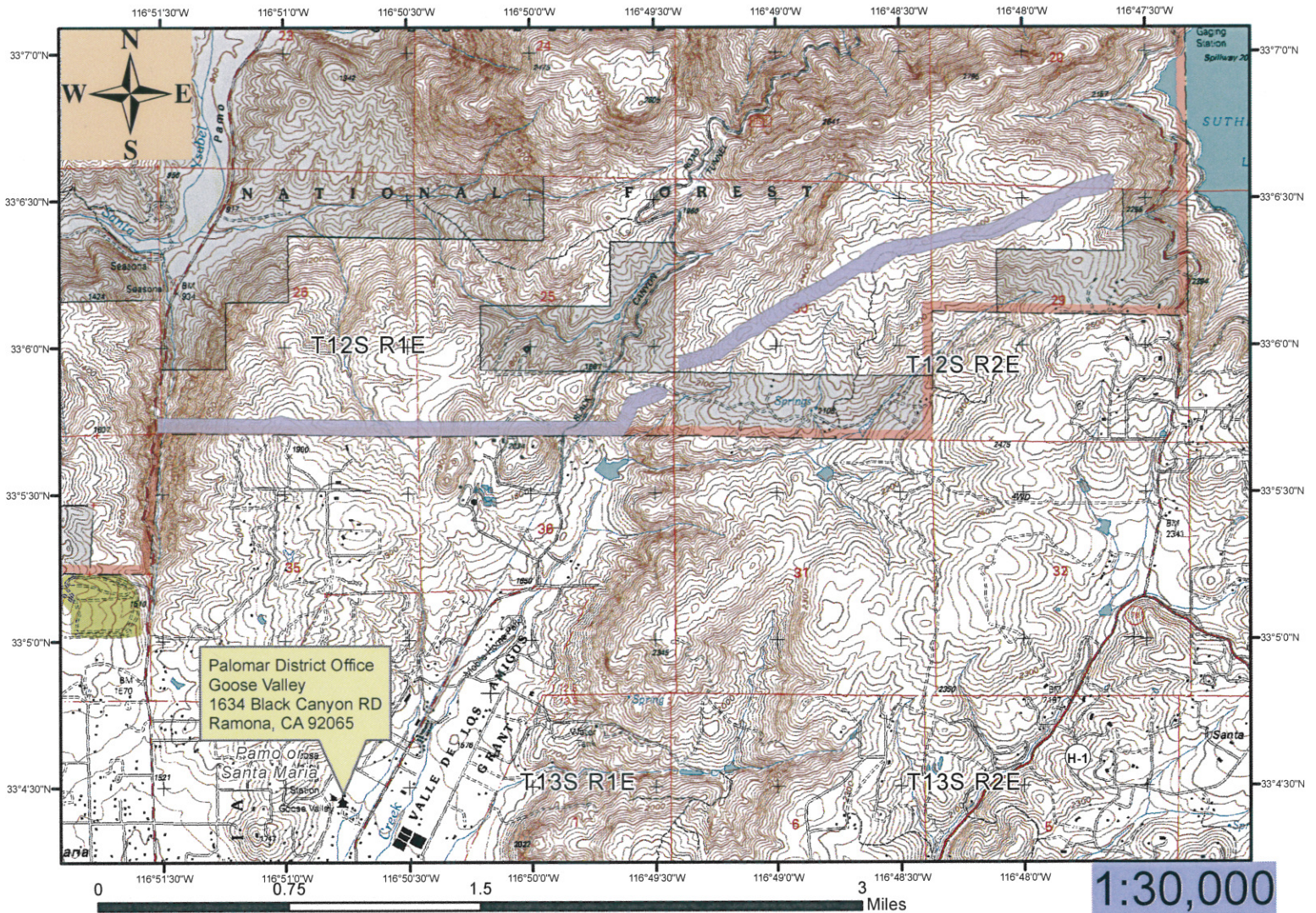
California Department of Forestry and Fire Protection (CAL FIRE)
Monte Vista Unit
Tony Mecham, Unit Chief

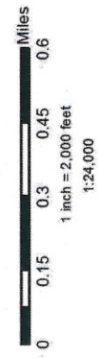
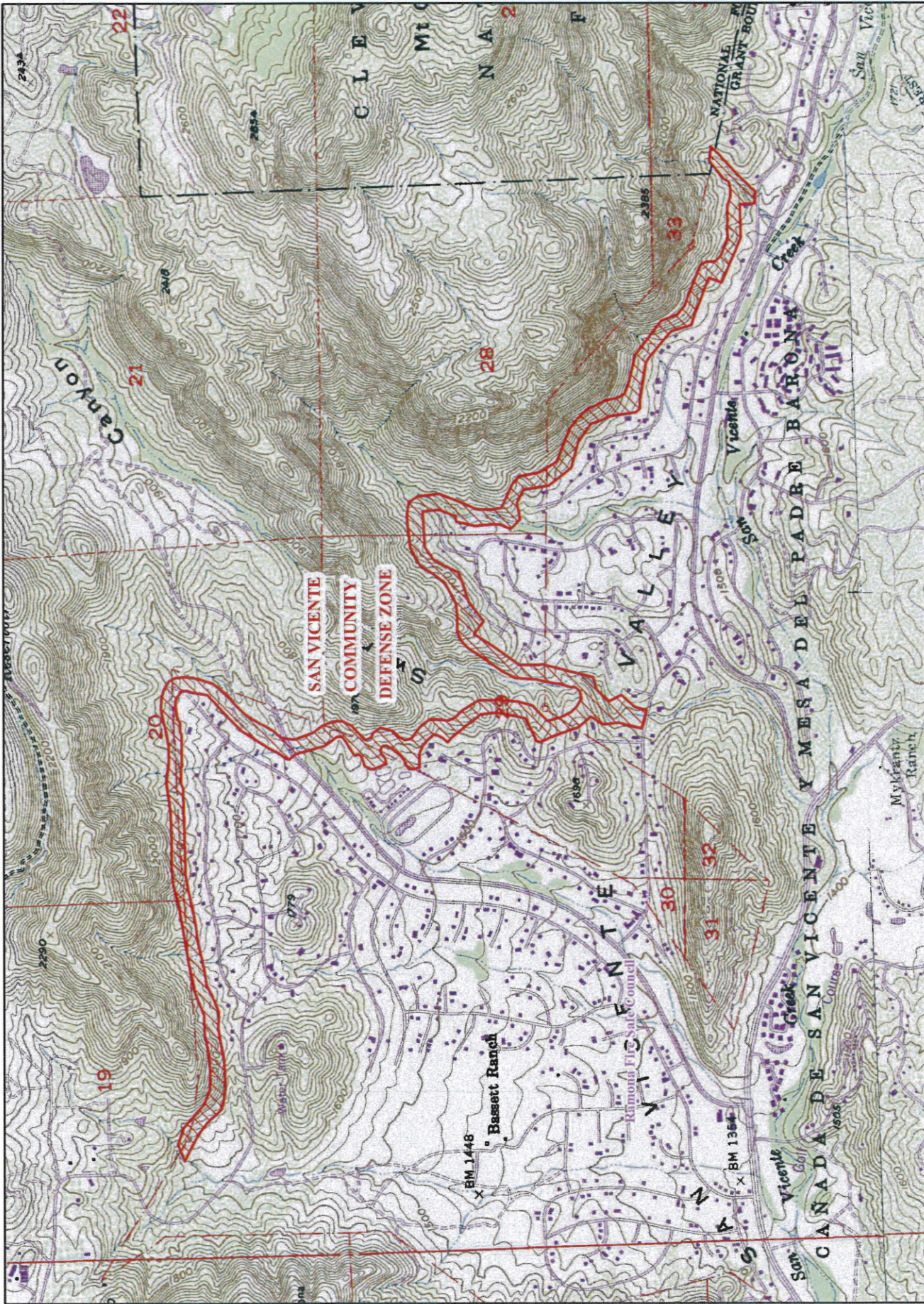
SECTION IV: Appendix C: Project Maps

- Figure 1: North Ramona Community Defense Zone Fuel Break
- Figure 2: San Vicente Community Defense Zone
- Figure 3: Ramona West End Community Protection Plan Fuel Break
- Figure 4: Ramona Evacuation Map and Text



North Ramona Community Defense /Fuel Break





SAN VICENTE Community Defense Zone

Legend

San_Vicente_Community_Defense_Zone

Community Wildfire Protection Plan

Ramona

San Diego County, CA

January 3, 2006

Introduction

This Community Wildfire Protection Plan (CWPP) was developed by the community of Ramona with guidance and support from the County of San Diego, California Department of Forestry and Fire Protection (CDF), the United States Forest Service (USFS), and the Bureau of Land Management (BLM). This CWPP supplements San Diego County, Department of Planning and Land Use documents referenced in Appendix A.

The process of developing a CWPP can help a community clarify and refine its priorities for the protection of life, property, and critical infrastructure in the wildland-urban interface. It can also lead community members through valuable discussions regarding management options and implications for the surrounding watershed.

COLLABORATION: COMMUNITY/AGENCIES/FIRE SAFE COUNCILS

Representatives involved in the development of the Ramona CWPP are included in the following table. Their name, organization, and roles and responsibilities are indicated below:

CWPP Development Team:

Name	Organization	Roles / Responsibilities
Kristi Mansolf Patrick Uriell	Ramona Community Planning Group	Primary development of CWPP and decision-making, community risk and value assessment.
Jason Batchelor	County of San Diego, Land Use and Environment Group	Primary development of CWPP and decision-making, community risk and value assessment, development of community protection priorities, and establishment of fuels treatment project areas and methods.
John Wiecjorek	County of San Diego, Office of Emergency Services	Provides input and expertise on planning and hazard mitigation.

Chief Mike Bratton	California Department of Forestry and Fire Protection (CDF)	Facilitation of planning process and approval of CWPP process and minimum standards. Provides input and expertise on forestry, fire and fuels, and FireWise concepts.
Robin Kinmont	San Diego County Fire Safe Council	Provides educational outreach and support for pre-wildfire disaster planning, defensible space, fuel reduction, and hazard assessment.
Chief Thomas Brand	United States Forest Service	Provides input and expertise on federal lands forestry, fire and fuels, and FireWise concepts.
Chief Michael Vogt	Ramona Fire Department	Provides local information and expertise inside of the Ramona Municipal Water District (RMWD) boundaries. This could include community risk and value assessment, development of community protection priorities, and establishment of fuels treatment project areas and methods.
Chief David Nissen Chief Cary Coleman Chief Gilbert Turrentine	San Diego Rural Fire Protection District Intermountain Volunteer Fire Department San Pasqual Volunteer Fire Department	Provides local information and expertise in specified areas outside of the boundaries. This could include community risk and value assessment, development of community protection priorities, and establishment of fuels treatment project areas and methods.
Clayton Howe	Bureau of Land Management	Provides local information and expertise for BLM lands, including fire prevention, fuels treatment and land management activities.

Community Overview

Ramona is located in the Santa Maria Valley approximately 35 miles northeast of San Diego, and about 25 miles east of the coast. It is bordered by the City of Poway to the west, the unincorporated community of Lakeside and the Barona Indian Reservation to the south, the unincorporated community of Santa Ysabel to the east, and the City of Escondido, City of San Diego and the North Mountain Subregion to the north. The Santa Maria Valley is at

approximately 1,400 feet elevation. Mountains at the Ramona/Poway border reach elevations of about 2,800 feet. Ramona is in the unincorporated area of San Diego County, conforms to the Ramona Community Planning Area, and covers approximately 130 square miles.

Ramona is characterized by steep slopes, rocky terrain, rolling topography, deep canyons, high valleys, and expanses of grassland. There are natural lands bordering, in, and surrounding Ramona by which wildfire can make its way into the community. Slopes surrounding Ramona and within the Planning Area are covered with chaparral and coastal sage scrub. The valleys contain grasslands. Woodlands are found in some of the natural drainage areas and in some of the grasslands throughout the Planning Area.

Ramona has a long history of small and large brush fires that have directly impacted all of Ramona except for the Town Center. Portions of the southern part of Ramona burned in larger fires in 1913, 1928, 1956 (Inaja), and in 1970 (Boulder). This entire area burned again in 2003 (Cedar). Portions of the northern part of Ramona burned in 1929 and in 1967.

The community of Ramona has a population of approximately 36,088 residents, domiciled in approximately 11,463 households (SANDAG, 2005). The most densely populated area of Ramona is the Town Center and vicinity. Development spreads out in concentric circles from the Town Center, with large clusters of homes in the Mt. Woodson planned development at the far western side of Ramona (189 homes); Fernbrook in the Mussey Grade area to the south; the Holly Oaks (approximately 100 homes), San Diego Country Estates (SDCE) (approximately 3,000 homes) and Rancho San Vicente (approximately 200 homes) planned developments to the south; and the Oak Tree Ranch modular home park (approximately 100 homes) north east of the Town Center, and approximately 2 miles south of the Cleveland National Forest. The Rosemont area consists of many private road easements that come off of State Hwy 67 to the north and south, with a varying number of homes on each. The portion of the Ramona Planning Area east of Magnolia is outside of the RMWD boundaries, and east of the County Water Authority line. Residences are on large parcels and the land is more rolling. There are many smaller planned developments, and individual residences on large acreages dispersed throughout the Planning Area. Large areas of open space are often directly adjacent and integrated into developed areas. Ramona has 20 biological Resource Conservation Areas that are located outside of the Town Center, throughout the Planning Area.

The Highland Hills Estates, Holly Oaks Ranch, Mt. Woodson, Oak Tree Ranch, Rancho San Vicente, Rancho Santa Teresa, and SDCE subdivisions all have CC&R's or rules and regulations in place where the homeowners maintain their own brush clearance, and, where applicable, clearance of common areas is maintained through a variety of arrangements. The RMWD contracts with Fire Prevention Services to provide fire inspections, and the Ramona Fire Department enforces clearance within the RMWD boundaries. Outside of the RMWD boundaries, fire inspections are conducted by CDF and enforced by the County, except in the Barona Mesa area, CDF conducts fire inspections and the San Diego Rural Fire Protection District enforces clearance. The USFS conducts hazard inspections of private lands within the boundaries of the federal lands, enforcing the County regulations of 100 feet of clearance.

The County of San Diego, City of San Diego and the Bureau of Land Management (BLM) have land holdings within the Planning Area. The County owns and manages the following Multiple Species Conservation Plan (MSCP) and open space lands throughout the Planning Area: the

Barnett Ranch, Simon Park, Luelf Ranch (Holly Oaks), and Boulder Oaks. The County has area specific management directives for managing MSCP and open space lands. Included in these directives is a fire management plan that includes vegetation management so that the lands are not a threat to structures. The City of San Diego owns Lake Sutherland, a portion of Mt. Woodson, portions of Boden Canyon, and the Fosters Ranch in Pamo valley. The Camp Hope project is located at Lake Sutherland. Vegetation management is conducted for the Camp. The City clears brush from the dam area, along access roads and around keepers' houses annually. No other vegetation management activities are conducted by the City of San Diego in the Planning Area. The BLM has a parcel in the Highland Valley area which the tenant was allowed to clear. The BLM leases the Mt. Gower Preserve to the County of San Diego, who maintains the land as part of their open space and MSCP fire management plan.

The 4,000 acre Monte Vista Ranch, northwest of the SDCE development, was recently purchased by The Nature Conservancy. A bed and breakfast is operated onsite. Grounds around the bed and breakfast in this area are landscaped and maintained. San Diego Gas & Electric has road easements through the Monte Vista Ranch that they maintain.

Public road easements throughout the Planning Area are maintained by the jurisdictions that own the road easements.

Identification of Values at Risk

Using technology and local expertise, the community of Ramona, supported by the County of San Diego, Department of Planning and Land Use, has developed a series of maps depicting the site and situation of the Ramona Community (Appendix B). A narrative of the community and adjacent landscapes of interest was also prepared. The maps will act as a visual aid from which community members can assess and make recommendations. The maps include the following:

1. Inhabited areas and values at potential risk to wildland fire
2. Fire threat designated by California Department of Forestry and Fire Protection FRAP.
3. A preliminary designation of the community's Wildland Urban Interface (WUI) zone (CDF FRAP).
4. USGS topographic quad map of the community.

Local Preparedness and Firefighting Capability

Initial response to all structural fires, medical and associated emergencies within the RMWD boundaries is the responsibility of the Ramona Fire Department, through a contract with CDF. CDF provides fire protection for wildland fires outside of the RMWD boundaries, where applicable. The Intermountain Volunteer Fire Department provides fire protection to structures and lands east of the County Water Authority line. San Diego Rural Fire Protection District provides fire protection to the Barona Mesa area of Ramona, south of the San Diego Country Estates. The San Pasqual Volunteer Fire Department provides fire protection to the Highland

Hills area of Ramona, north of the Ramona grasslands, and portions of the Highland Valley area. The USFS provides fire protection to federal lands, including the Cleveland National Forest. Fire suppression on BLM lands is performed under a cooperative agreement with the California Department of Forestry and Fire Protection. Fire prevention, fuels treatment and land management activities remain the responsibility of the Bureau of Land Management's Palm Springs-South Coast Field Office.

Ordering of resources is managed through automatic aid agreements and mutual aid agreements between the above entities. All automatic aid agreements and mutual aid agreements, training, equipment, and response are the responsibility of the local fire department and the agencies listed above.

STRUCTURAL IGNITABILITY

In cooperation with the County of San Diego, and the Ramona Fire Department, the San Diego Rural Fire Protection District, the San Pasqual Volunteer Fire Department, and the Intermountain Volunteer Fire Department, the community of Ramona supports and promotes Firewise activities. The community of Ramona supports and educates its citizens in ways to reduce structure ignitability through meeting County of San Diego Building and Fire Code requirements.

The partnership that exists between the listed organizations (federal, state, local, and citizens) allows the community of Ramona to reduce hazardous vegetative fuels that could ignite residences and commercial facilities during Santa Ana-wind fire conditions. Maintaining properties with the appropriate defensible space is a key factor to protecting lives and property in this community in the foothills.

HAZARD REDUCTION PRIORITIES

1. Conduct brush management projects whereby fuel loads are reduced along selected ingress/egress routes, and homes in the community.
2. Map all roads, road markers, and water sources in the communities.
3. Measures to reduce structural ignitability
 - a. Weed abatement inspections conducted by USFS (on federal lands), CDF, and the Ramona Fire Department through a contract with a private company. Forced abatement by the Ramona Fire Department, the San Diego Rural Fire Protection District, and the County of San Diego.
 - b. Construction enhancements through County building and fire code requirements.
 - c. Class A re-roofing through County building and fire code requirements.

Current/Planned Projects

1. USFS Project: Black Canyon Prescribed Burn Project. Planning stages. Description: The District is proposing to treat 1488 acres of mature mixed chaparral between Black Canyon Rd. to Pamo Valley Rd. with mechanized equipment and a cooperative prescribed burn project with the CDF.
2. CDF Project: San Vicente Community Protection Plan (preliminary stages): The CDF, in cooperation with the USFS, BLM, Ramona Fire Department, San Diego Rural Fire Protection District, and Barona Indian Reservation, is planning a project to use a combination of prescribed burn and fuel breaks with the objective to encircle the SDCE and adjacent residential areas, from the upper San Diego River drainage to Ramona Oaks, south of the Barona Mesa area, across to Wildcat Canyon Rd., to beyond the Barona speedway.

The Community Wildfire Protection Plan developed for the community of Ramona:

- Was collaboratively developed. Interested parties and federal land management agencies in the vicinity of Ramona have been consulted.
- This plan identifies and prioritizes areas for hazardous fuel reduction treatments and recommends the types and methods of treatment that will protect the community of Ramona.
- This plan recommends measures to reduce ignitability of structures throughout the area addressed by the plan.

RAMONA CWPP

The following entities attest that the standards listed above have been met and mutually agree with the content of this Community Wildfire Protection Plan:

Charles R. Mann

California Department of Forestry
and Fire Protection, San Diego Unit

Raymond Hernandez

County of San Diego, Land Use and
Environment Group

Ralph Steinhoff

County of San Diego, Fire Services
Coordinator

Michael J. Vogt

Ramona Fire Department

D. W. C.

Rural Fire Protection District of
San Diego

[Signature]

Intermountain Volunteer Fire Department

Albert P. Turmentine

San Pasqual Volunteer Fire
Department

Marty Reavitt

Fire Safe Council of San Diego County
President

Peter Chieff

Ramona Community Planning Group

County of San Diego, Office of
Emergency Services

[Signature]

County of San Diego

Appendix A

Documentation Affecting Fuels Reduction, Building Construction, and Community Fire Protection

1. County of San Diego Building Code (2004)
2. County of San Diego Fire Code (2004)
3. County of San Diego Combustible Vegetation and Flammable Material Ordinance (2004)
4. County of San Diego, OES Hazard Mitigation Plan (2004)
5. County of San Diego, Fire, Defensible Space and You... (2005)
6. County of San Diego, Fire Safety and Fuels Reduction Program Overview (2005)
7. <http://frap.cdf.ca.gov> for additional maps, data, and documents
8. <http://www.cafirealliance.org> California Fire Alliance website for additional documents.
9. <http://wildfire.cr.usgs.gov/fireplanning> California Fire Alliance mapping tool for additional planning and documents.

Appendix B

Figure 1: *Ramona Community Planning Area Map*

Figure 2: *Communities Map*

Shows the main population centers.

Figure 3: *Assets at Risk*

Shows improvements in the community according to the County Assessor. Some improvements, not in the Assessors parcels, may not be shown in this map.

Figure 4a-4c: *USGS Topographic Maps*

Figure 5: *Fire Threat (modeled by CDF FRAP)*

Combines expected fire frequency with potential fire behavior to create 4 threat classes.

Figure 6: *Fire History 1910 – 1993 (CDF FRAP)*

Large fire history, generally 300-acre minimum for CDF fires since 1950 and 10-acre minimum for USFS fires since 1910, but many smaller fires as well.

Figure 7: *Wild land-Urban Interface zone designations (CDF FRAP)*

Depicts areas where there is wildland fire threat to human development.

Figure 8: *Vegetation Classification*

Shows vegetation classified using Holland 95 classification schema. Last updated July 2005.

Ramona Community Wildfire Protection Plan – 2011 Amendment

SECTION I -- Amended 2011: COLLABORATION

This Ramona CWPP Amendment was completed after project consultation with the following agencies:

Greg Griswold, CAL FIRE/Ramona Fire, 11/12/09

Dave Nissen, San Diego County Rural Fire, 11/10/09

Mike McFedries, San Diego County Parks, 11/12/09

Clay Howe, BLM. 11/12/09

Steve Wilson, USFS, 11/11/09

Ramona Community Wildfire Protection Plan – 2011 Amendment

SECTION II -- Amended 2011: PRIORITIZED FUEL REDUCTION TREATMENTS

Completed Projects (see original CWPP as authorized in 2006):

Cal-Fire Project, priority #3 in the original CWPP Amendment, was completed in January, 2010. This project was funded by a USFS grant from the California Clearinghouse for the 2009-2010 grant cycle and was added to the Ramona CWPP in January, 2008, as part of the original CWPP Amendment. Project work was conducted by the Ramona West End Fire Safe Council, working with Cal-Fire.

Priorities for 2011:

Projects #1 and #2 of the original CWPP have been revised since the original CWPP was adopted in 2006. The original North Ramona Community Defense Zone (priority #1) was previously the Black Canyon Prescribed Burn Project. After the 2007 fires, the project was extended west to SR-78 and east to Lake Sutherland. Priority #2, the San Vicente Community Defense Zone and West Side Truck Trail Roadside Fuelbreak, was previously named the San Vicente Community Protection Plan. The original objective was to encircle the community of the San Diego Country Estates and adjacent residential areas from the Upper San Diego River drainage to Ramona Oaks south of Barona Mesa, across Wildcat Canyon Road to beyond the Barona Speedway. The current project covers a smaller area than in the original CWPP but will provide approximately the same fire protection to the San Diego Country Estates and Barona Mesa communities as the original due to its location to the east of the communities.

Current/Planned Projects, 2011:

1. USFS Project, in cooperation with Cal-Fire (CDF): North Ramona Community Defense Zone. Scoping Stage/Public Review. Description: The project proposes to treat 357 acres of mixed chaparral by mechanical means, to create a shaded fuel break from Clevenger Canyon (SR-78, north) on the west to Lake Sutherland on the east. The project will provide protection to the communities on the north side of Ramona.
2. USFS Project, in cooperation with Cal-Fire (CDF): San Vicente Community Defense Zone and West Side Truck Trail Roadside Fuelbreak. Scoping Stage/Public Review. Description: The San Vicente Community Defense Zone project proposes to treat 230 acres of mixed chaparral by mechanical means to create a fuel break from east to west on the south side of the base of Mt. Gower, then south to southwest to provide protection to the communities of the San Diego Country Estates and Barona Mesa. The West Side Truck Trail Roadside Fuel Break project proposes to treat 120 acres by mechanical means.
3. Cal-Fire (CDF) Project: West End Ramona Community Protection Plan (preliminary stages): Cal-Fire in cooperation with the County of San Diego and other stakeholders, is planning a project to use a combination of prescribed burning and fuel breaks with the objective of enhancing the protection of adjacent residential areas to the south of State Hwy. 67 from Rockhouse Rd. in the west to Kay Dee Ln. in the east. This project could benefit fire defense for the Mt. Woodson area by slowing fires advancing from the Dos Picos drainage.

Ramona Community Wildfire Protection Plan – 2011 Amendment

The Community Wildfire Protection Plan developed for the Community of Ramona:

- Was collaboratively developed with the Ramona Community Planning Group and Ramona West End Fire Safe Council, DBA Ramona fire Safe Council. This CWPP Amendment is submitted by the Ramona Community Planning Group as the sponsor for the CWPP. Interested parties and federal land management agencies in the vicinity of Ramona have been consulted.
- This plan identifies and prioritizes areas for hazardous fuel reduction treatments and recommends the types and methods of treatment that will protect the community of Ramona.
- This plan recommends measures to reduce ignitibility of structures throughout the areas addressed by the plan.

Ramona Community Wildfire Protection Plan – 2011 Amendment

SECTION IV -- Amended 2011: SIGNATURE PAGE(S)

The Community Wildfire Protection Plan developed for Ramona, California:

- Was collaboratively developed. Interested parties and federal land management agencies in the vicinity of **Ramona** have been consulted.
- This plan identifies and prioritizes areas for hazardous fuel reduction treatments and recommends the types and methods of treatment that will protect **Ramona**.
- This plan recommends measures to reduce ignitability of structures throughout the area addressed by the plan.
- This CWPP document is intended for use as a planning and assessment tool only, utilizing a compilation of community issues/goals and projected fire mitigation strategies. The CWPP is not to be construed as indicative of project "activity" as defined under the "Community Guide to the California Environmental Quality Act, Chapter Three, Projects Subject to CEQA." Per the Community Guide, Section 3.1.1, "CEQA only applies to public agency decisions to approve, or actions to carry out, a discretionary project." Any actual project activities meeting this definition of project activity and undertaken by the CWPP participants or agencies listed shall meet with local, state and federal environmental compliance requirements.
- Was reviewed on the following dates by the San Diego Community Wildfire Protection Plan Review Committee:
 - Date of 1st CWPP Review Committee review & recommendation for changes:
07/01/2009
 - Date of 2nd/final CWPP Review Committee review and recommendation for authorization by CAL FIRE: 01/18/2011
- Committee members include:


Don Butz, Viejas Fire Department	Daryll Pina, CAL FIRE
Kathleen Edwards, CAL FIRE	Thom Porter, CAL FIRE
Bob Eisele, County of San Diego	Herman Reddick, County of San Diego Office of Emergency Services
Stephen Fillmore, US Forest Service	James Roberts, US Fish & Wildlife Service
Joan Friedlander, US Forest Service	Ralph Steinhoff, San Diego County Fire Authority
Clay Howe, Bureau of Land Management	Eddie Villavicencio, City of San Diego Fire & Rescue
Larry Wade, US Fish & Wildlife Service	John Wiejorek, County of San Diego Office of Emergency Services
Owen Martin, US Forest Service	Will Metz, US Forest Service
Ken Miller, San Diego County Fire Authority	Howard Windsor, CAL FIRE
Marty Leavitt, Resource Conservation District of Greater San Diego County/Fire Safe Council of San Diego County	

Ramona Community Wildfire Protection Plan - 2011 Amendment

SECTION IV: SIGNATORS - page 2

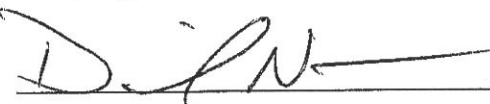
The Community Wildfire Protection Plan developed for Ramona, California:

The following entities attest that the standards listed above are proposed to be met and mutually accept the content of this Community Wildfire Protection Plan:



MUNICIPALITY
County of San Diego, San Diego County Fire Authority
~~Herman Reddick, Group Program Manager, Public Safety Group~~
Gregory Schreiner, Fire Marshal / Fire Services Coordinator

12/23/13
Date

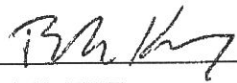


LOCAL FIRE
San Diego County Rural Fire Protection District
David Nissen, Chief

10/30/12
Date

LOCAL FIRE
San Pasqual Fire Department
David Davis, Interim Chief

Date

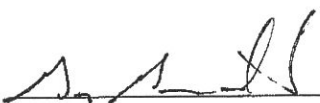


LOCAL FIRE
Ramona Fire
Burke Kremensky, Chief

10/2/12
Date

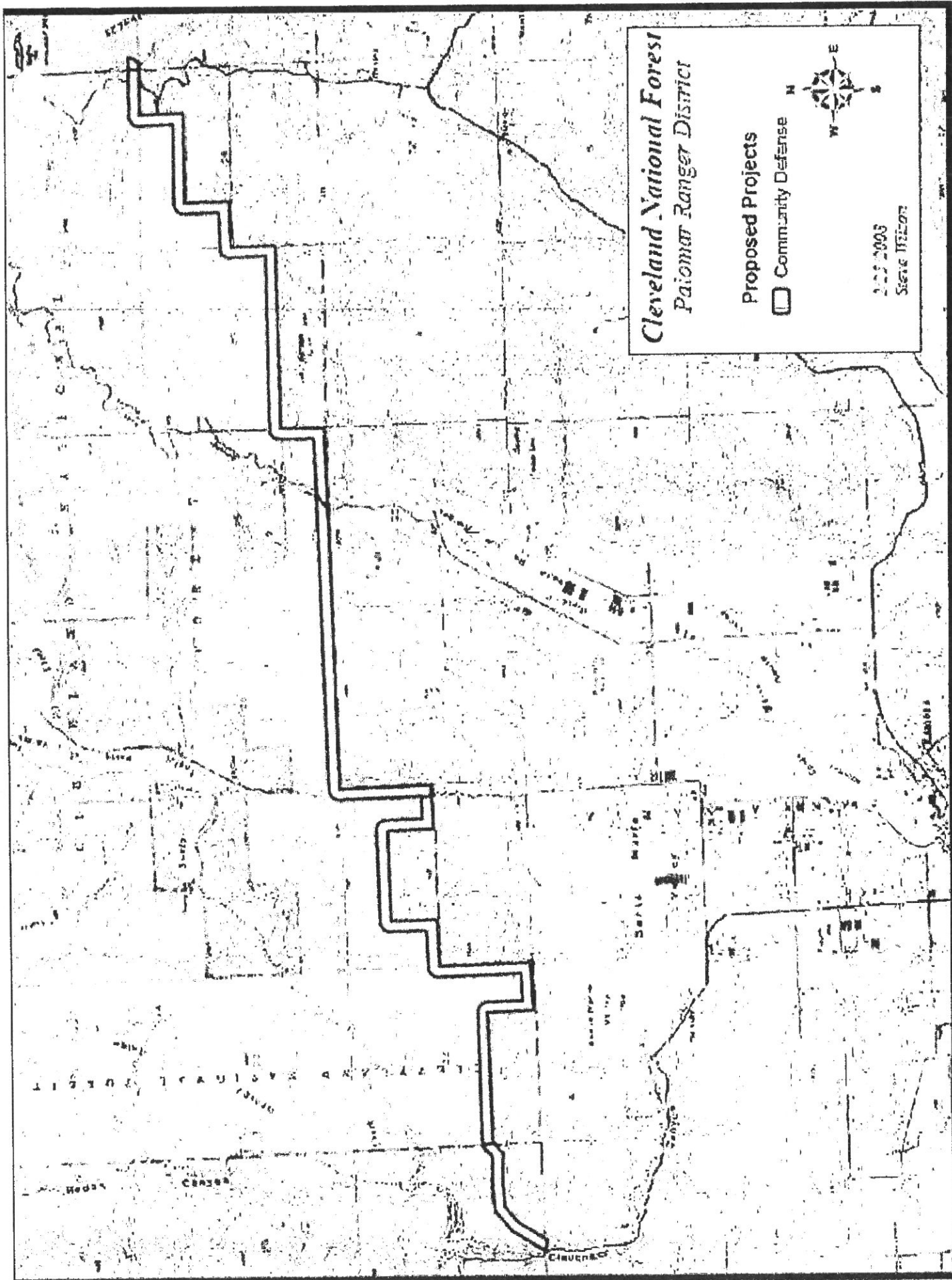
LOCAL FIRE
Inter-Mountain Fire Department
Jeremy Christofferson, Chief

Date

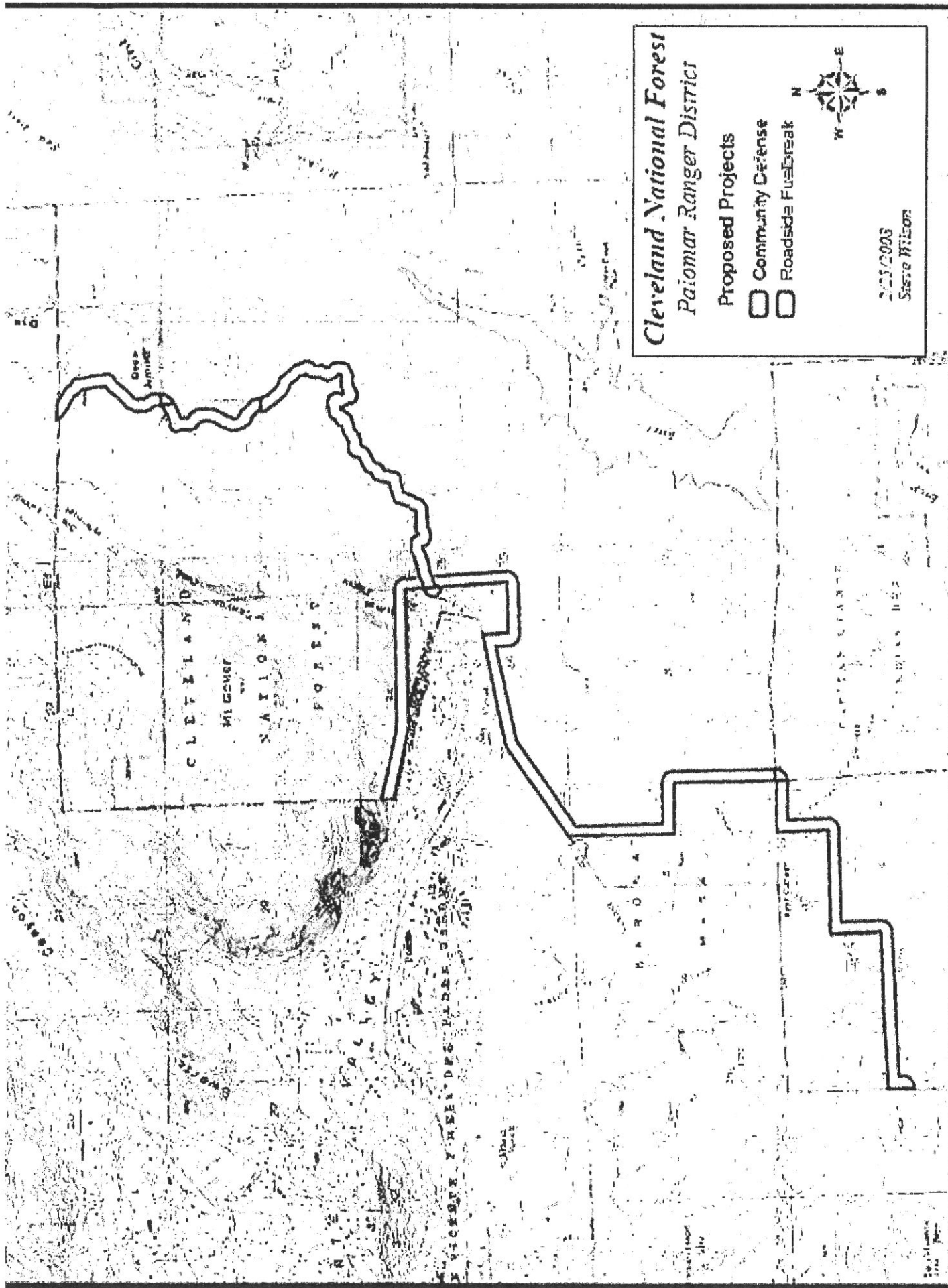


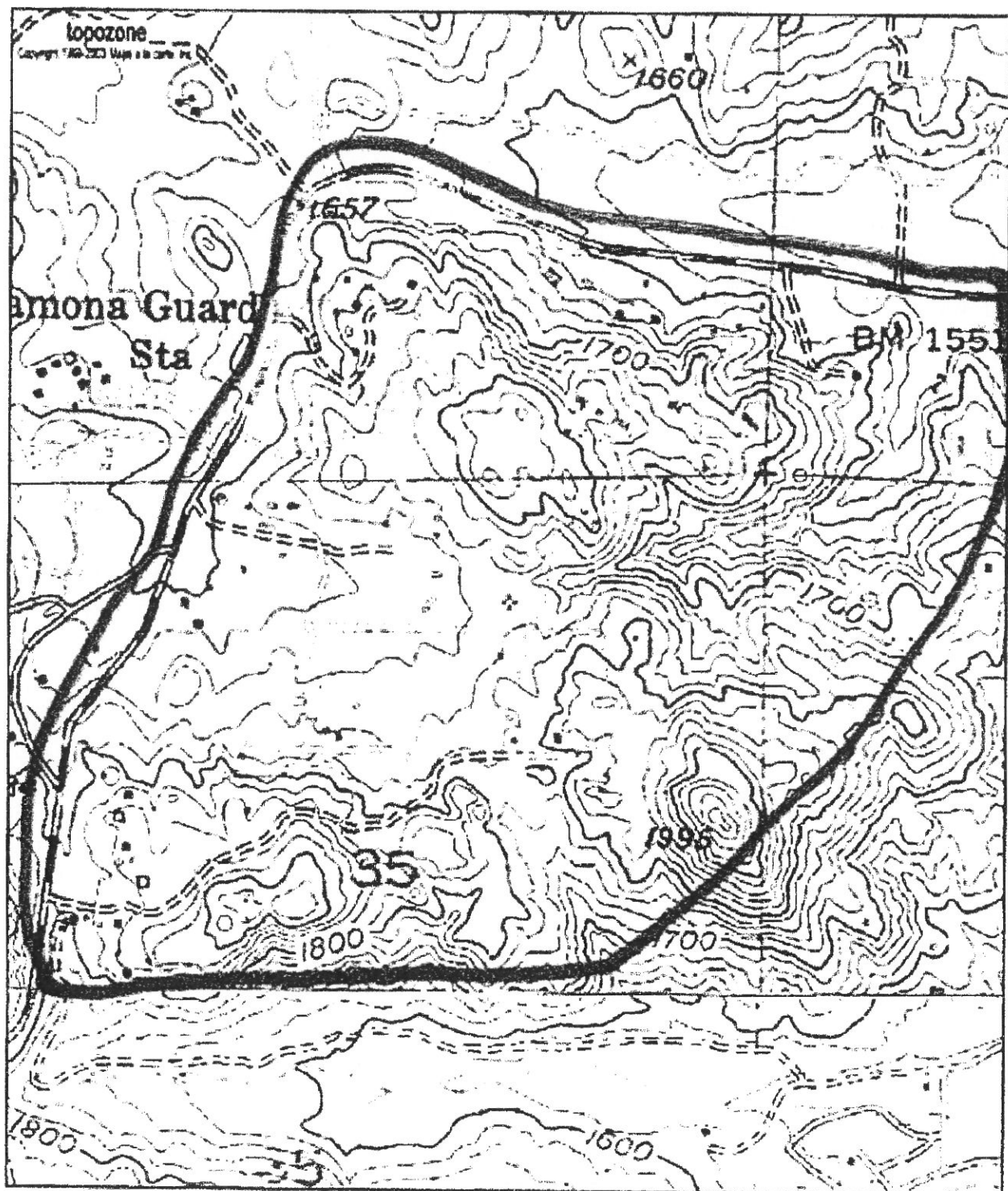
STATE AGENCY
California Department of Forestry and Fire Protection (CAL FIRE)
Monte Vista Unit
~~Thom Porter, Unit Chief~~
Greg Griswold,

1-2-14
Date



North Ramona Community Defense Zone





0 0.1 0.2 0.3 0.4 0.5 mi
0 0.09 0.18 0.27 0.35 0.47 ft

USGS SAN PASQUAL (CA) Quadrangle
Projection is UTM Zone 11 NAD83 Datum

M=12.503
G=0.327