

Wynola Estates

Community Wildfire Protection Plan

San Diego County, CA

Introduction

This Community Wildfire Protection Plan (CWPP) was developed by *Wynola Estates Fire Safe Council* with guidance and support from the County of San Diego, California Department of Forestry and Fire Protection, the United States Forest Service, and the Bureau of Land Management. This CWPP supplements San Diego County Department of Planning and Land Use documents referenced in Appendix A.

Wynola Estates
Community Wildfire Protection Plan
San Diego County, CA

Table of Contents

INTRODUCTION

SECTION I: COLLABORATION

 COMMUNITY / AGENCIES / FIRE SAFE COUNCILS

 COMMUNITY OVERVIEW

 IDENTIFICATION OF VALUES AT RISK

 LOCAL PREPAREDNESS & FIRE FIGHTING CAPABILITY

SECTION II: PRIORITIZED FUEL REDUCTION TREATMENTS

 PRIORITIES

 EXISTING PROJECTS

SECTION III: TREATMENT OF STRUCTURAL IGNITABILITY

SECTION IV: SIGNATURE PAGE(S)

 SIGNATURE PAGE(S)

SECTION V: APPENDIX A – LIST OF REFERENCES

SECTION V: APPENDIX B – - CWPP meeting tracking documents

SECTION V: APPENDIX C – MAPS

SECTION V: APPENDIX D – Amendments, etc.

ADDENDUM – AUTHORS CONTACT INFORMATION

This information is not included as part of the final public CWPP document for protection of the applicant's privacy as per the Privacy of Information Act. It will be attached as a separate document for internal use only and must be updated/revised periodically throughout the life of the document.

SECTION I: COLLABORATION**A: COMMUNITY / AGENCIES / FIRE SAFE COUNCILS**

Representatives directly involved in the development of the *Wynola Estates CWPP* are included in the following table. Their organization, and roles and responsibilities are indicated below:

CWPP Development Team:

Organization/Name	Roles / Responsibilities
Wynola Estates FSC Coko Brown, Director	Preside over WEFSC meetings, attend FSCofSD meetings and events, coordinate with public agencies, and oversee CWPP projects. Manage educational programs and website.
Wynola Estates Water District JoAnn Bernard, President	Coordinate CWPP and WEFSC projects as they involve the Wynola Water District and its assets.
Julian Cuyamaca Fire Protection District Chief Rick Marinelli	Assist with community risk and community protection priorities, fuels treatment project areas and methods.
US Forest Service Tim Gray, Fuel Reduction Chief	Assist with community risk and community protection priorities, fuels treatment project areas and methods.
Wynola Estates Home Owners Association Tim Taschler	Coordinate CWPP and WEFSC projects as they involve the Wynola HOA and community homeowners.
SD County Fire Authority Greg Schreiner	Coordinate CWPP and WEFSC projects as they involve the SD County Fire Authority and projects they might undertake in the area.
CalFire, San Diego Unit Eric Just	Coordinate CWPP and WEFSC projects as they involve CalFire and projects they may undertake in the areas surrounding Wynola Estates.
BLM Clay Howe	Coordinate CWPP and WEFSC projects as they involve BLM projects they may undertake in the areas surrounding Wynola Estates.

SECTION I: COLLABORATION -- continued

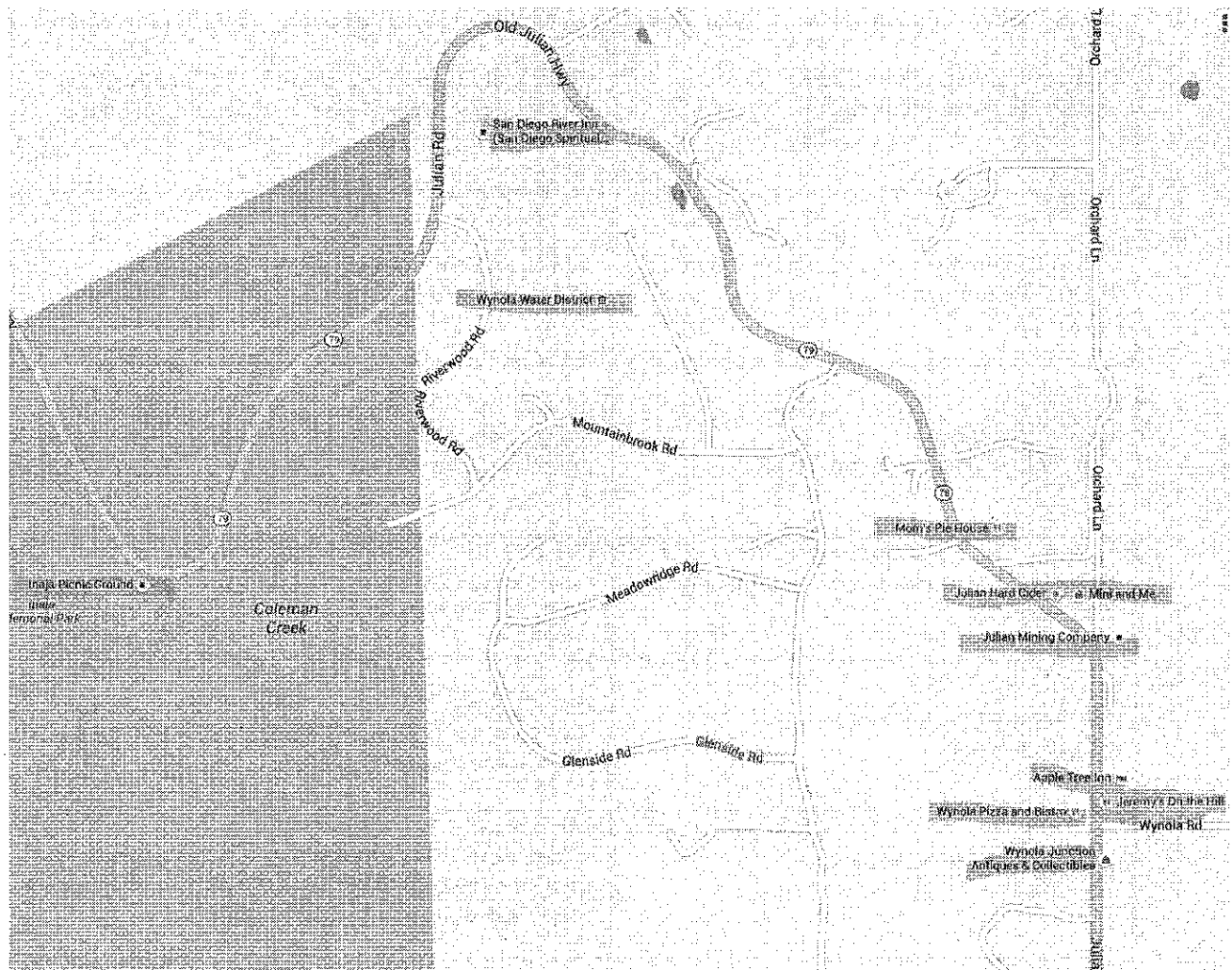
B. Community Overview – Description of topography, population, climate, land uses, businesses, schools infrastructure, fire safe councils, and other applicable traits specific to this CWPP area.

Wynola is an unincorporated community located in the Spencer Valley in San Diego County, California (latitude 33.098 and longitude -116.646). The elevation of Wynola is 3,645 feet. Wynola appears on the *Santa Ysabel* U.S. Geological Survey Map. Wynola Estates is a community of 86 lots (smallest 2.5 acres) with 72 homes, its own water district (Wynola Water District) and roads. Wynola Estates is situated between Cleveland National Forest and Wynola, as well as 6 miles West of the historical town of Julian, and being a flat parcel of land with paved roads and fire hydrants, an important point from which to fight wildfire.

According to the Köppen Climate Classification system, Wynola has a warm-summer Mediterranean climate.

Around Wynola Estates

Destinations in the Wynola area include Juch Canyon, Spencer Valley and Quanai Canyon. Landmarks in the area include Inaja Memorial Park, Frank Lane Park and Julian Pioneer Museum.



SECTION I: COLLABORATION -- continued

C. Identification of Community Values at Risk

Using technology and local expertise, the sponsors of this CWPP have developed a series of maps depicting the site and situation of the *Wynola Estates* Community (Appendix B).

Values at risk within the community are:

- 72 private homes
- Wynola Water District
- Additional nearby homes and business adjacent to Wynola Estates (please see map above).
- Wynola is the site of the Spencer Valley School, a one room public elementary school built in 1905 with a student population of 30-35 children. It is the only school in the Spencer Valley School District, founded in 1876.

D. Local Preparedness and Firefighting Capability— All fire jurisdictions within the area as identified by this CWPP are listed below with information as available on number of firefighting personnel and fire response vehicles:

Julian Cuyamaca Fire Protection District provides both fire suppression and paramedic services. They have 1 ALS Ambulance and a County provided Medic Engine. They also have 1 water tender, 1 type 1 engine, 1 type 2 engine, 1 urban interface engine and 1 brush engine.

- District Fire Chief Rick Marinelli
- District Battalion Chief Mike Van Bibber
- District Secretary Shawna Simonds

CAL FIRE Julian Station #50 also provides fire suppression in the area. They have 2 type 3 engines, 1 type 1 medic engine and a battalion chief in quarters.

SECTION II: PRIORITIZED FUEL REDUCTION TREATMENTS

The partnership that exists between the listed organizations and citizens in this CWPP allows the community of *Wynola Estates* to reduce hazardous vegetative fuels that could ignite residences and commercial facilities, particularly, during Santa Ana wind fire conditions. Maintaining properties with the appropriate defensible space is a key factor to protecting lives and properties.

The CWPP is not to be construed as indicative of project "activity" as defined under the "Community Guide to the California Environmental Quality Act, Chapter Three, Projects Subject to CEQA." Any actual project activities undertaken that meet this definition of project activity and are undertaken by the CWPP participants or agencies listed shall meet with local, state and federal environmental compliance requirements.

A. Priorities

Wynola Estates is a community in Wynola, CA that is on the Community at Risk list and is located in a VHFHSZ. There are 73 homes in the community and the Wynola Water District (WWD). There are an additional 75-100 homes in the surrounding area as well as numerous businesses. The community is located 7 miles West of Julian, 1 mile West of Wynola and 2 miles East of Santa Ysabel. The entire West side of the community is bordered by the sharp slopping hills of Inaja that lead down the mountain.

The intent of the WEFSC and this CWPP is to optimize the use of scarce resources (money, people and equipment) to achieve the greatest overall fire fuel reduction and proactive wildfire defense for the community.

The primary goal is to prioritize projects as follows:

1. Education – continually offering education about fire safety and fire defense through the wefsc website as well as through community events which will include seminars, meeting and round table discussions.
2. Defensible Space Around Values At Risk, specifically the 72 homes built in the community and the assets of the Wynola Water District (wells, pump house, storage tanks). The removal of fire fuels in the community, especially large tress killed by GSOB, that are within 100 feet of homes, line streets and, more critically, located under or near power and telecommunication lines. The removal of this ladder fuel leading to power lines is critical, as is removal of large dead trees that could easily fall while burning, or in high winds, and prevent safe egress from the community during a wildfire as well as hinder fire fighting efforts.
3. Removal for fire fuel, specifically dead tree limbs and branches which homeowners typically have after high winds and storms. Chipping dead vegetation, along with weed and brush removal are critical for fuel reduction efforts.
4. New fire hydrants for the community water district, Wynola Water District. These hydrants are not only used to fight a community fire, but are often used by local firefighters to fill water trucks when fighting wildfires in the neighboring areas (Julian and Santa Ysabel). New hydrants will enable the Wynola Estates community to be better able to defend against wildfires coming from perimeter zones such as Inaja. With a major reduction in fire fuel as well as new fire hydrants, Wynola Estates can become a buffer zone and defensible area for firefighters.
5. Fuel reduction along Highway 78.
6. Fuel reduction between Inaja Memorial Park and USFS Wilderness Area (Cleveland National Forest which is directly adjacent to Wynola Estates

B. Existing Projects

Currently unfunded other than through the founders' donations, WEFSC has:

1. designed, built and populated a website (www.wefsc.com) - this website is both informational and educational. the goal is to keep community members actively involved in if fire safety through awareness and education.
2. held its first meeting about the FSC program and its importance, with handouts and guest speakers:
 - a. Julian Cuyamaca Fire Protection District Chief Rick Marinelli
 - b. US Forest Service Fuel Reduction Chief Tim Gray

There are currently no projects under way in our immediate surrounding area.

- Southern California Fire Management Zone Fire Management Office Lee Rickard says that there are no projects in our area.
- Tim Gray, Forest Service Fuels Prevention, USFS, lists three projects that are somewhat near us:
 - Inaja Memorial Grounds approximately 6 acres that is maintained annually reducing latter fuels, and chipping and removal of other hazardous fuels T12S/R3E/Section 27 SW1/4.
 - Brushing of the Cedar Creek Road 13S11
 - Pine Hills Fire Station Compound approximately 6 acres that is maintained annually reducing hazardous fuels and burning.
- Fire Chief Eric Just from CalFire says there are no projects in our area.

SECTION III: TREATMENT OF STRUCTURAL IGNITABILITY

In cooperation with the County of San Diego, the *Wynola Estates CWPP* supports and promotes fire safe activities and supports and educates its citizens in ways to reduce structure ignitability through meeting the requirements of the County of San Diego Building and Fire Code.

Following is a description of structural challenges, including proposed methods of improvement and implementation proposed for the community:

Maintaining properties with the appropriate defensible space is a key factor to protecting lives and property on the mountain.

The key focus of our program for reducing structural ignitability include:

- (1) increasing the distance between the fuel bed and a structure in order to lessen direct flame impingement and to reduce the likelihood that blowing embers initiate a structural fire.
- (2) removing flammable conduits such as fences, decks, and flowerbeds around homes that can provide a path for a fire.
- (3) encourage homeowners to make fire safe improvements to their homes such as replacing flammable roofs, protecting all vents with wire mesh, and installing dual pane windows, preferably with wood, metal or metal-reinforced vinyl frames, to lessen the probability of fire intrusion.
- (4) encourage homeowners to maintain their driveways and meet the legally required access standards.
- (5) work with the Wynola Water District to help maintain water systems during a fire emergency.

WEFSC's educational goals include but are not limited to:

- Continually keep the WEFSC website up-to-date with educational material, Cal Fire updates and Red Flag conditions
- Continuous education regarding the importance of defensible space
- Distribution of information regarding reducing structural ignition threat

The Community Wildfire Protection Plan as developed for *Wynola Estates CWPP*:

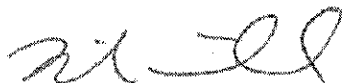
- Was collaboratively developed, and meets the intent of the Healthy Forest Restoration Act (HFRA) in emphasizing the need for agencies to work collaboratively with communities in developing hazardous fuel reduction projects, and places priority on treatment areas identified by communities themselves in a CWPP. Interested parties and federal land management agencies in the vicinity of this CWPP have been consulted.
- Identifies and prioritizes areas for hazardous fuel reduction treatments and recommends the types and methods of treatment that will protect areas within this CWPP.
- Recommends measures to reduce ignitability of structures throughout the area addressed by the plan.
- This CWPP is intended for use as a planning and assessment tool only, utilizing a compilation of community issues/goals and projected fire mitigation strategies. The CWPP is not to be construed as indicative of project "activity" as defined under the "Community Guide to the California Environmental Quality Act, Chapter Three, Projects Subject to CEQA." Per the Community Guide, Section 3.1.1, "CEQA only applies to public agency decisions to approve, or actions to carry out, a discretionary project." Any actual project activities meeting this definition of project activity and undertaken by the CWPP participants or agencies listed shall meet with local, state and federal environmental compliance requirements.
- Was reviewed on the following dates by the San Diego Community Wildfire Protection Plan Review Committee:
 - Date of 1st CWPP Review Committee review & recommendation for changes: _____
 - Date of 2nd/final CWPP Review Committee review and recommendation for authorization by CAL FIRE: _____
- Committee members include:

Don Butz, Chair of CWPP Review Committee, Tribal representative		
Clay Howe, Bureau of Land Management		
Sheryl Landrum, Resource Conservation District of Greater San Diego County		
Tony Mecham, CAL FIRE		
Lee Rickard, US Fish & Wildlife Service		
Greg Schreiner, SD County Fire Authority		
Eddie Villavicencio, San Diego Fire-Rescue		
Will Metz, US Forest Service		

SECTION IV: SIGNATORS page 2

This Community Wildfire Protection Plan has been developed for the community of *Wynola Estates*.

The following entities attest that the standards listed above are proposed to be met and mutually accept the content of this Community Wildfire Protection Plan:

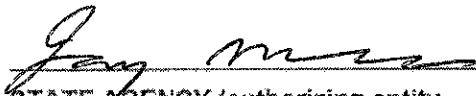


LOCAL FIRE

Julian Cuyamaca Fire Protection District
Chief Rick Marinelli

2-20-16

Date



STATE AGENCY (authorizing entity — required for finalization)

California Department of Forestry and Fire Protection (CAL FIRE)
Monte Vista Unit
Tony Mechem, Unit Chief

7-4-2016

Date

Other signatures are desirable to show collaboration and acknowledgement. Add additional signatures as needed (volunteer fire chief, Fire Safe Council, others as identified) — see next page.

SECTION IV: SIGNATORS - page 3

This Community Wildfire Protection Plan has been developed for the community of *Wynola Estates*.


The following entities attest that the standards listed above are proposed to be met and mutually accept the content of this Community Wildfire Protection Plan:



LOCAL FIRE SAFE COUNCIL
(Coko Brown, Director)

2/23/16

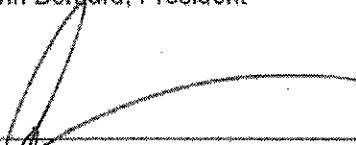
Date



LOCAL WATER DISTRICT
Wynola Estates Water District
JoAnn Bergard, President

2/23/16

Date



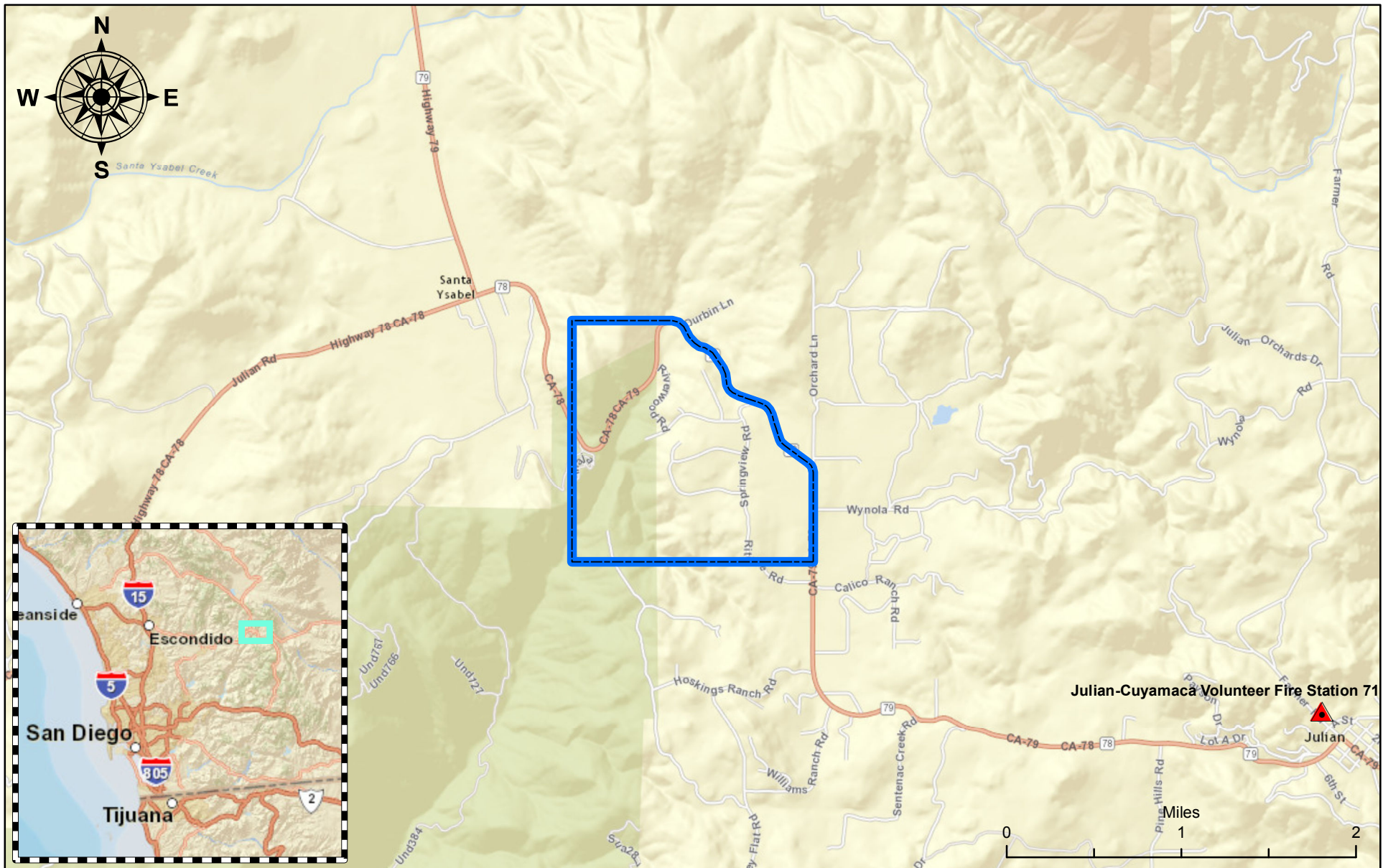
LOCAL HOME OWNERS ASSOCIATION
Wynola Estates Home Owners Association
Tim Taschler

2/23/16

Date


USFS LOCAL FUEL REDUCTION CHIEF
US Forest Service
Tim Gray, Fuel Reduction Chief

Date



Legend

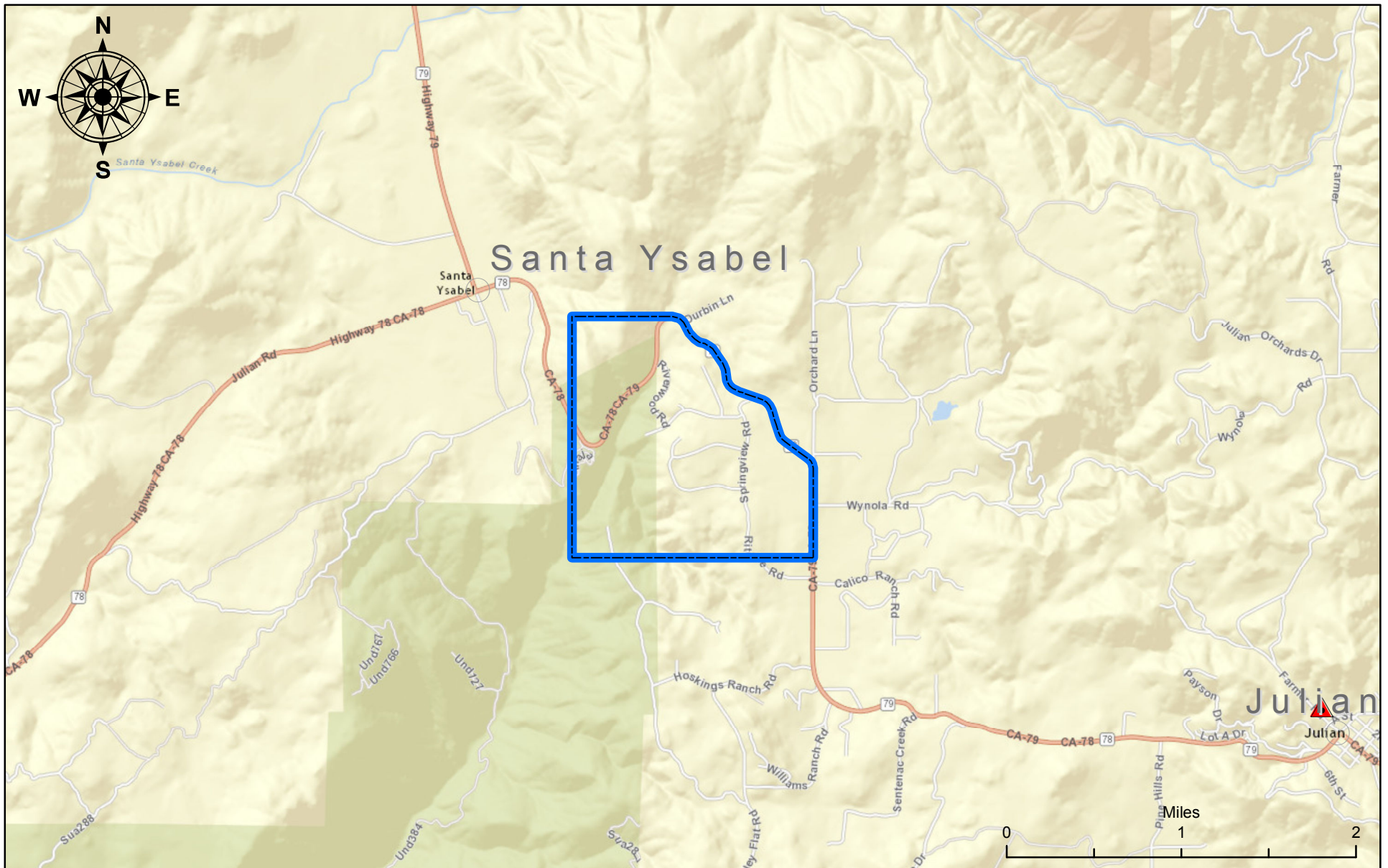
 Wynola Estates FSC Planning Area

 Fire Stations

Wynola Estates Fire Safe Council Planning Area


THIS MAP/DATA IS PROVIDED WITHOUT WARRANTY OF ANY KIND, EITHER EXPRESSED OR IMPLIED, INCLUDING BUT NOT LIMITED TO, THE IMPLIED WARRANTIES OF MERCHANTABILITY AND FITNESS FOR A PARTICULAR PURPOSE.





Legend

 Wynola Estates FSC Planning Area

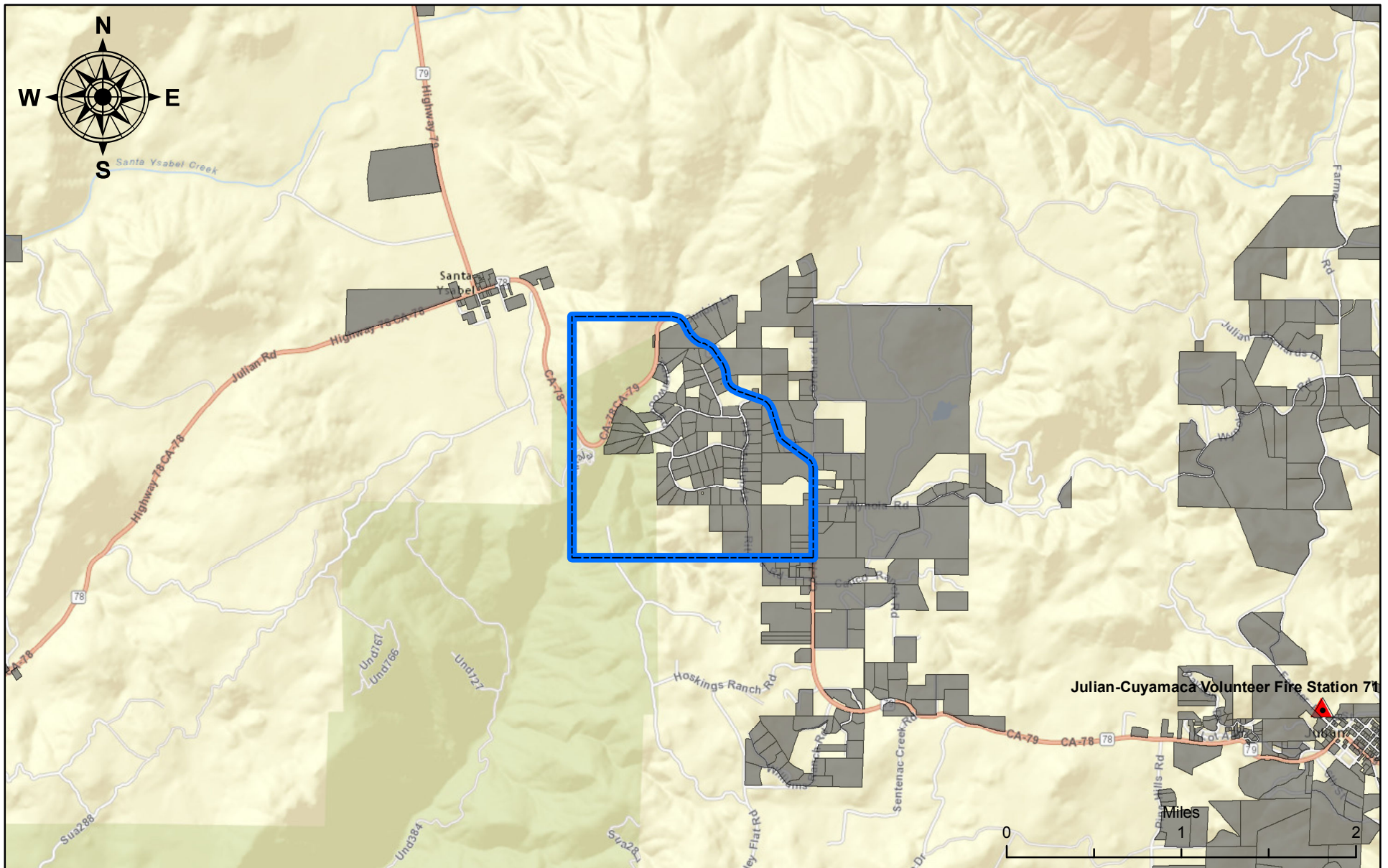
 Communities

 Fire Stations

Wynola Estates Fire Safe Council Communities

THIS MAP/DATA IS PROVIDED WITHOUT WARRANTY OF ANY KIND, EITHER EXPRESSED OR IMPLIED, INCLUDING BUT NOT LIMITED TO, THE IMPLIED WARRANTIES OF MERCHANTABILITY AND FITNESS FOR A PARTICULAR PURPOSE.





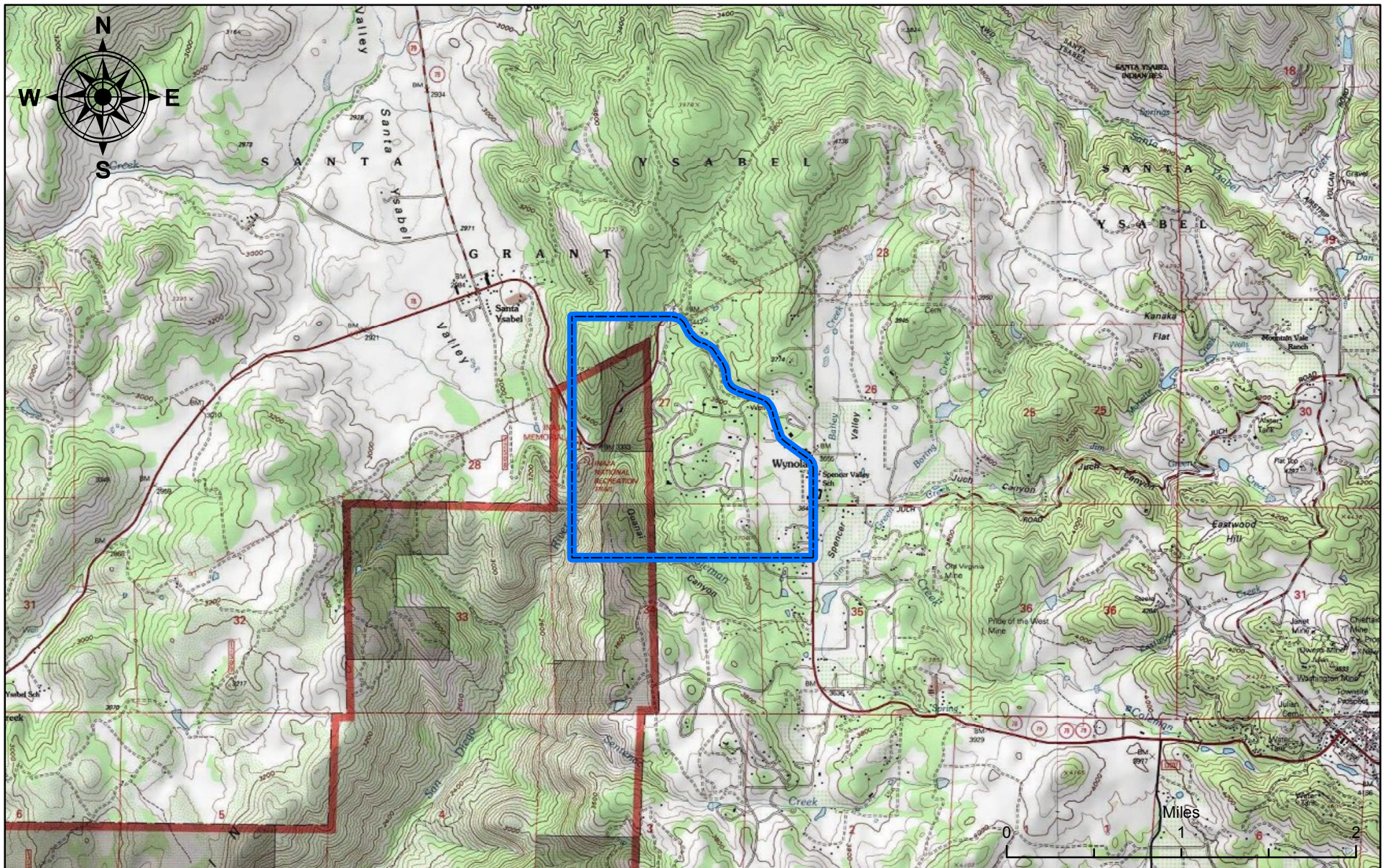
Legend

-  Wynola Estates FSC Planning Area
-  Improved Properties
-  Fire Stations

Wynola Estates Fire Safe Council Assets at Risk

THIS MAP/DATA IS PROVIDED WITHOUT WARRANTY OF ANY KIND, EITHER EXPRESSED OR IMPLIED, INCLUDING BUT NOT LIMITED TO, THE IMPLIED WARRANTIES OF MERCHANTABILITY AND FITNESS FOR A PARTICULAR PURPOSE.





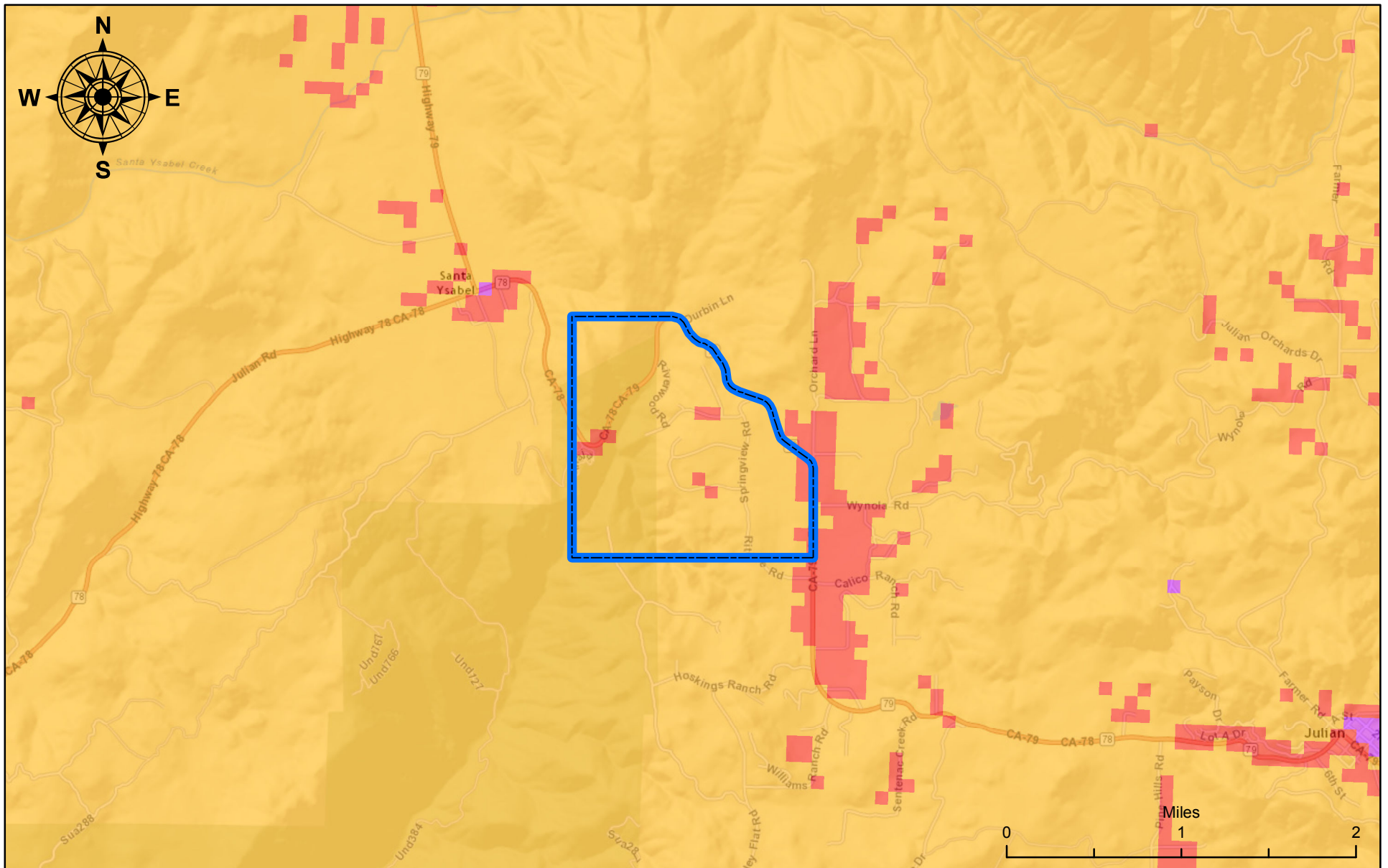
Legend

 Wynola Estates FSC Planning Area

Wynola Estates Fire Safe Council Topographic

THIS MAP/DATA IS PROVIDED WITHOUT WARRANTY OF ANY KIND, EITHER EXPRESSED OR IMPLIED, INCLUDING BUT NOT LIMITED TO, THE IMPLIED WARRANTIES OF MERCHANTABILITY AND FITNESS FOR A PARTICULAR PURPOSE.





Legend

Wynola Estates FSC Planning Area

Fire Threat

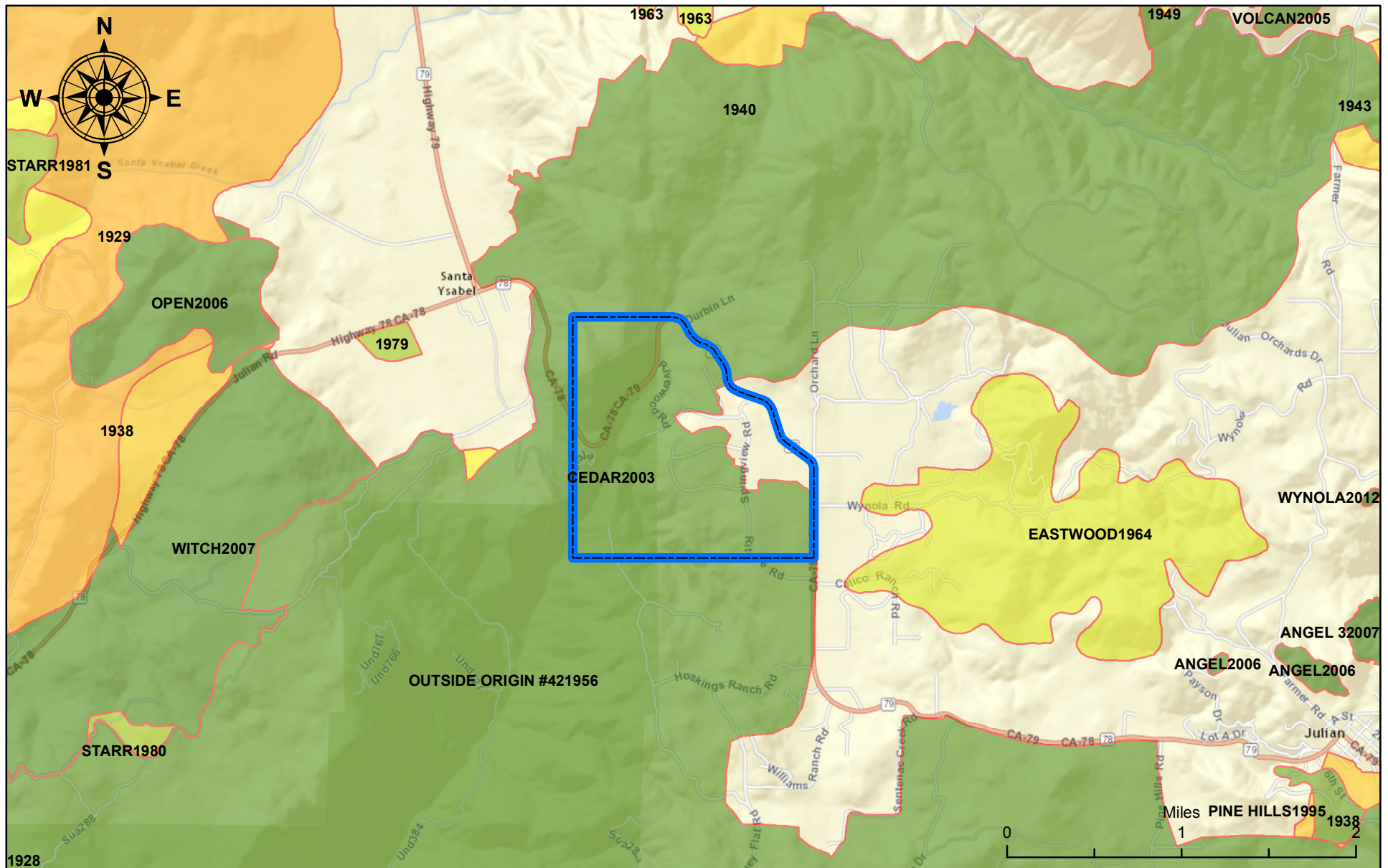
Threat Level

- Low
- Moderate
- High
- Very High
- Extreme

Wynola Estates Fire Safe Council Fire Threat

THIS MAP/DATA IS PROVIDED WITHOUT WARRANTY OF ANY KIND, EITHER EXPRESSED OR IMPLIED, INCLUDING BUT NOT LIMITED TO, THE IMPLIED WARRANTIES OF MERCHANTABILITY AND FITNESS FOR A PARTICULAR PURPOSE.





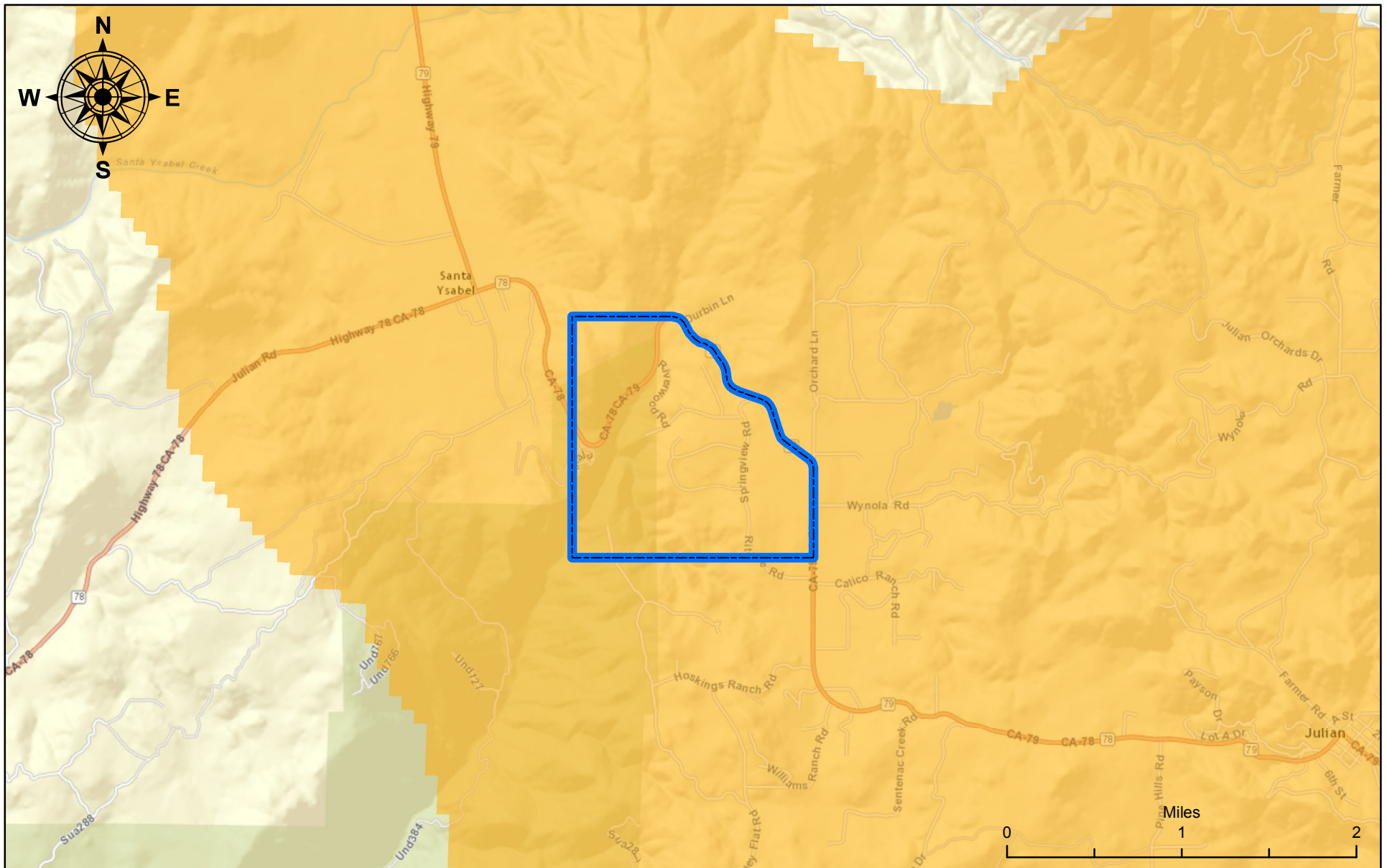
Legend

 Wynola Estates FSC Planning Area



Wynola Estates Fire Safe Council Fire History

THIS MAP/DATA IS PROVIDED WITHOUT WARRANTY OF ANY KIND, EITHER EXPRESSED OR IMPLIED, INCLUDING BUT NOT LIMITED TO, THE IMPLIED WARRANTIES OF MERCHANTABILITY AND FITNESS FOR A PARTICULAR PURPOSE.





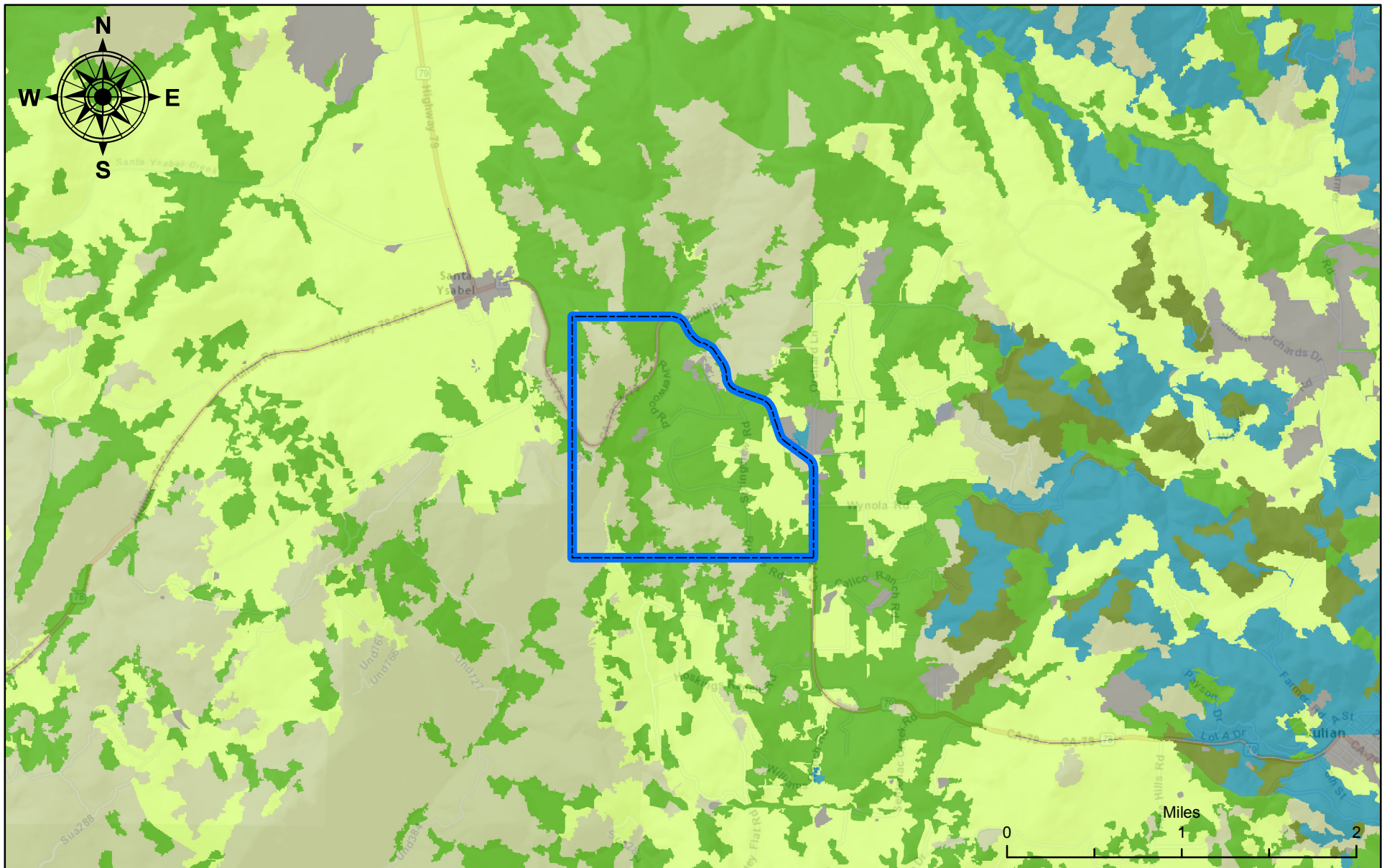
Legend

-  Wynola Estates FSC Planning Area
-  WUI Area


Wynola Estates Fire Safe Council Wildland Urban Interface (WUI)

THIS MAP/DATA IS PROVIDED WITHOUT WARRANTY OF ANY KIND, EITHER EXPRESSED OR IMPLIED, INCLUDING BUT NOT LIMITED TO, THE IMPLIED WARRANTIES OF MERCHANTABILITY AND FITNESS FOR A PARTICULAR PURPOSE.





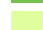





Legend

 Wynola Estates FSC Planning Area

Vegetation

Vegetation Class

-  Conifer forest/woodland
-  Hardwood forest/woodland
-  Herbaceous
-  Mixed conifer and hardwood forest/woodland
-  Non and Sparsely Vegetated - Urban, Agriculture or Aquatic
-  Shrub

Wynola Estates Fire Safe Council Vegetation

THIS MAP/DATA IS PROVIDED WITHOUT WARRANTY OF ANY KIND, EITHER EXPRESSED OR IMPLIED, INCLUDING BUT NOT LIMITED TO, THE IMPLIED WARRANTIES OF MERCHANTABILITY AND FITNESS FOR A PARTICULAR PURPOSE.

